

STAR COLOR PAINT

Auto Dispenser Standard Color Card

星空漆

全自动电脑调色机色卡

绚丽的色彩，宛如夜空中的七彩的繁星，熠熠闪烁

Shine with brilliant colors just like the colorful stars in the night sky

星空漆

产品介绍：

星空漆具有绚丽的色彩，宛如夜空中的七彩繁星，熠熠闪烁。区别于传统市面上的各类批刮水晶石，欧施泥星空漆是滚涂施工的一类新型高遮盖率的水性环保涂料。无需任何培训，简单滚涂一次完工。也可以通过简单打磨，提高它卓尔不凡的柔润手感，同时控制闪烁星空的密度，配合高质量的萤火虫罩面或星空漆专用罩面，提高它的防水，耐污，抗划伤等综合涂料性能。它是目前市场上，为数不多的最具性价比和艺术效果的装饰性涂料。

施工工艺：

1. 基层处理，符合国家室内油工验收标准，腻子批刮二到三遍，打磨平整，墙面正负公差小于2毫米；
2. 滚涂抗碱封闭底漆或专用底漆；
3. 用海绵滚涂，滚涂星空漆一到两遍；
4. 可以用360#木砂纸轻微打磨，调整手感和光亮。

备注：当星空漆用于公共场所墙面时，在其表面滚涂或喷涂，硅丙罩光，萤火虫罩光或星空漆专用罩光等，防水，耐污效果更佳。（切忌：不能滚涂黑洞罩光，它强烈的哑光效果，会遮蔽璀璨的星光）

色彩系统：

根据北美最新流行色，星空漆共有（96）个常用标准色，色彩从浅及深，按国际标准的色阶逐行排列和编号，输入编号，即可得到标准色，最小调漆量实际测量仅为 ≤ 50 克。也可根据消费者的实际需求，采用高精度电脑调色机，进行色彩的DIY，从而衍生出可以复制的，成千上万不同的色彩。的调色系统的色浆，采用世界上最顶级的德国品牌原装进口水性色浆，具有无与伦比的色彩还原性和上色率，同时通过了德国蓝天使最高环保等级标准的检测。

适用范围：

星空漆广泛应用到各类场所，如：别墅，会所，酒店，公寓，商场，学校，办公楼等；空间应用如：大堂，过道，公共区域，教室，客厅，卧室，书房，卫生间和厨房等；局部细节可以应用至：墙面，天花，灯池，龕，背景墙等室内空间。在中国迅猛发展的个性化和时尚化的室内装饰领域，星空漆将承担改变空间色彩和肌理的重要角色。

环保指标：

星空漆系列，通过了国家最严格的环保检测标准，所有涂料中的有害物质，均在抽样检测中为：未检出状态。同时系列的产品，也通过了国际上著名的：法国环保A+认证，北美建筑LEED检测，德国环保蓝天使VOC检测等。

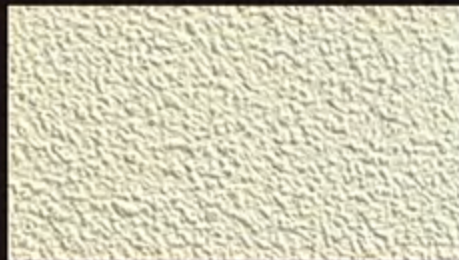
检测项目	标准要求	检测结果	单项结论
挥发物（VOC）	≤ 120	未检出	符合
苯和游离苯	≤ 100	未检出	符合
可溶重金属Pb Cd Cr Hg	≤ 60	均未检出	符合

本系列色卡中的小色块，因为人眼视觉角度的原因，会比实际上墙施工的色彩略浅，系列色卡中的任意色彩，均以复制尺寸300*300及以上大样板的色彩为准，以期达到和墙面尽可能接近的颜色。

OST-XK-1096(金彩)



OST-XK-1001



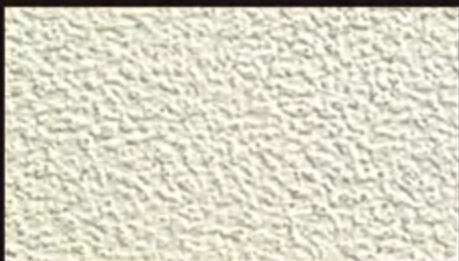
OST-XK-1002



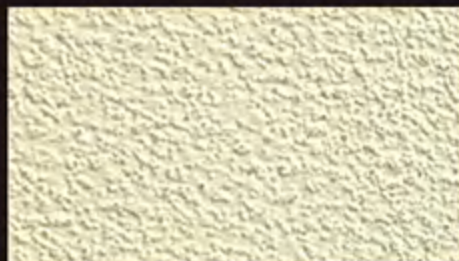
OST-XK-1003



OST-XK-1004



OST-XK-1005



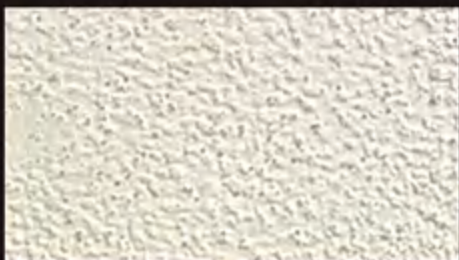
OST-XK-1006



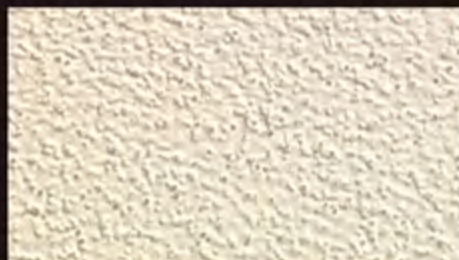
OST-XK-1007



OST-XK-1008



OST-XK-1009



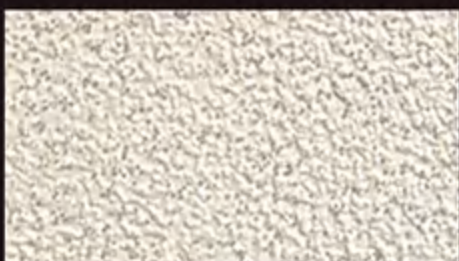
OST-XK-1010



OST-XK-1011



OST-XK-1012



OST-XK-1013



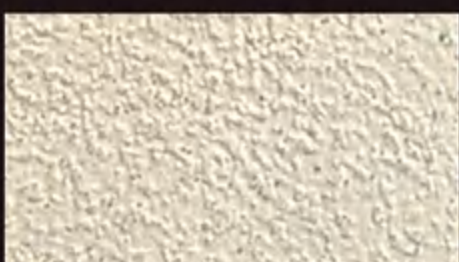
OST-XK-1014



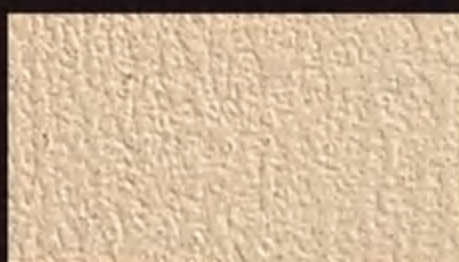
OST-XK-1015



OST-XK-1016



OST-XK-1017



OST-XK-1018



OST-XK-1019



OST-XK-1020



OST-XK-1021



OST-XK-1022



OST-XK-1023



OST-XK-1024



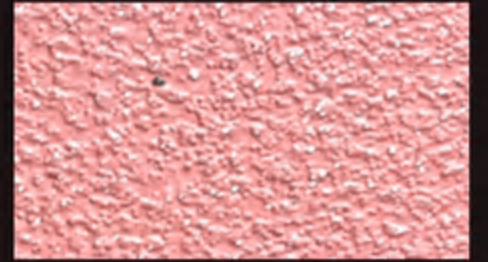
OST-XK-1025



OST-XK-1026



OST-XK-1027



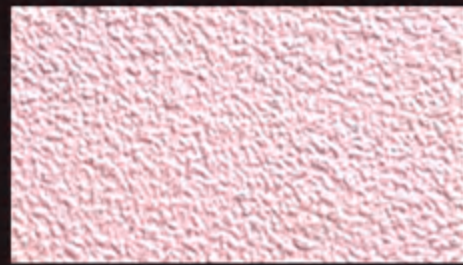
OST-XK-1028



OST-XK-1029



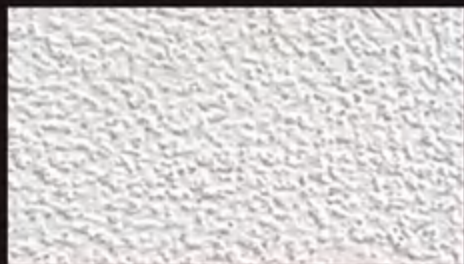
OST-XK-1030



OST-XK-1031



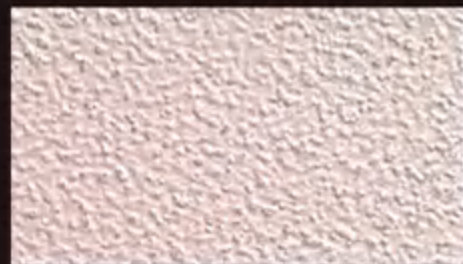
OST-XK-1032



OST-XK-1033



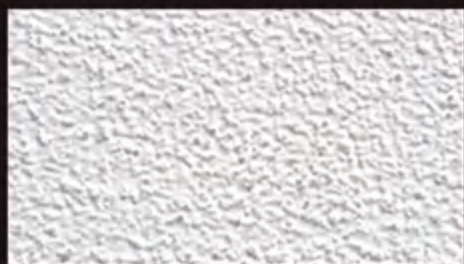
OST-XK-1034



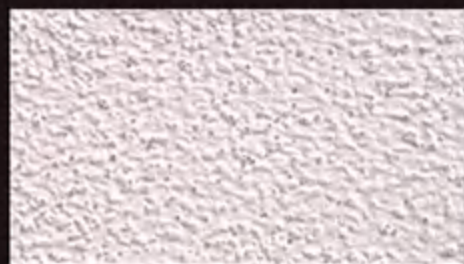
OST-XK-1035



OST-XK-1036



OST-XK-1037



OST-XK-1038

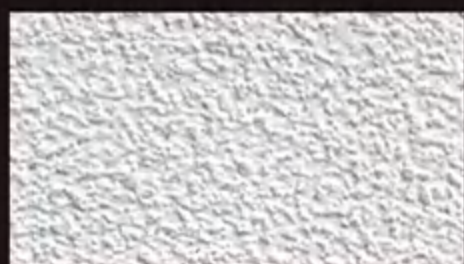
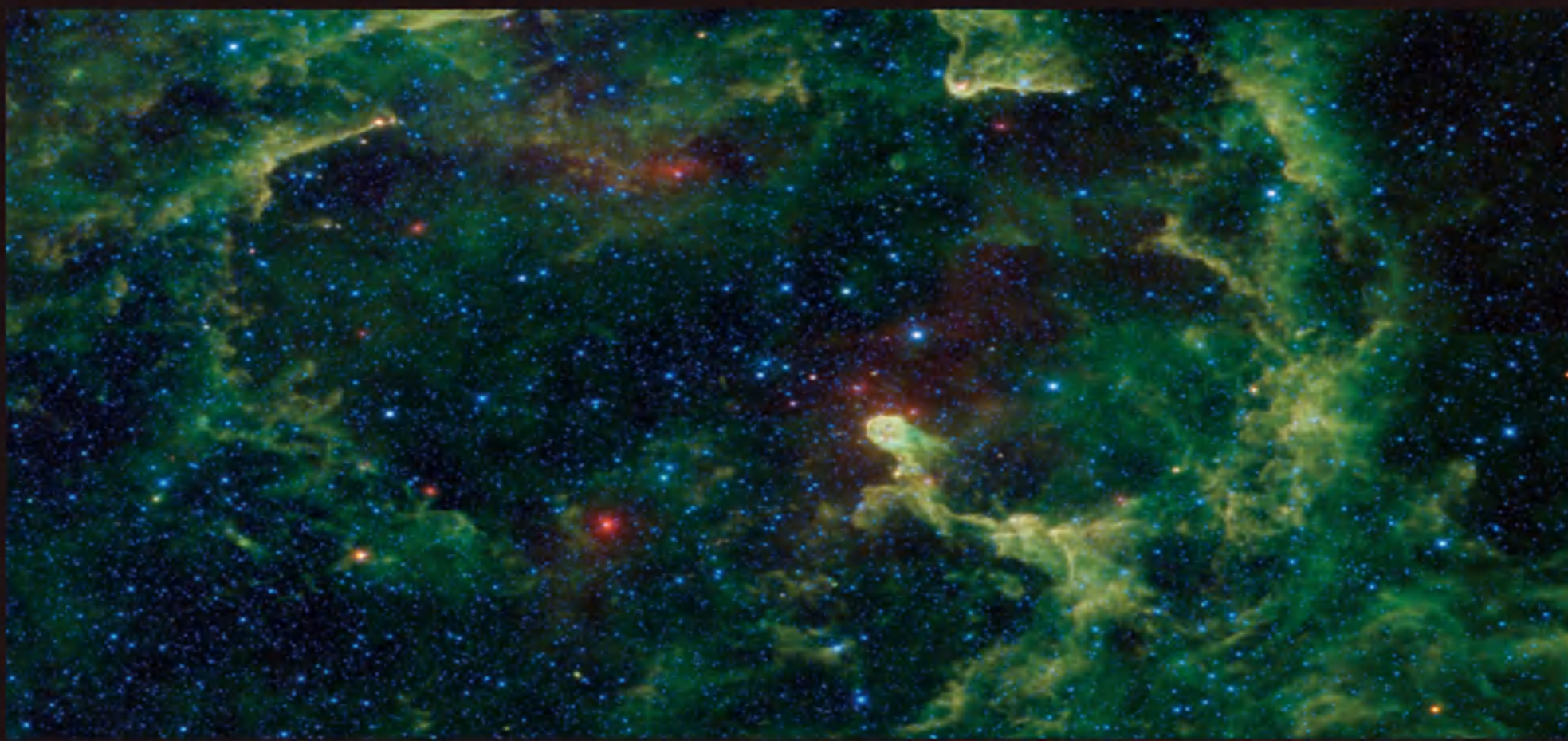


OST-XK-1039

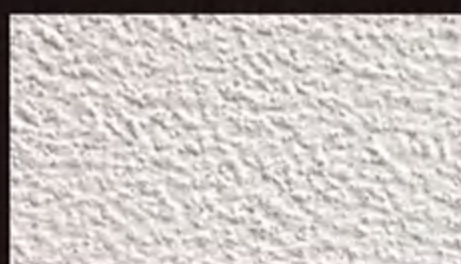


OST-XK-1040

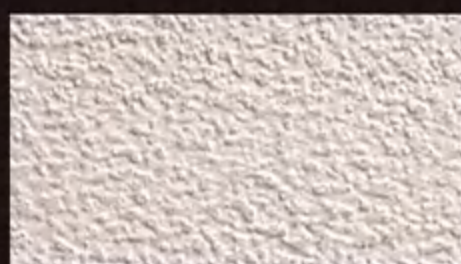




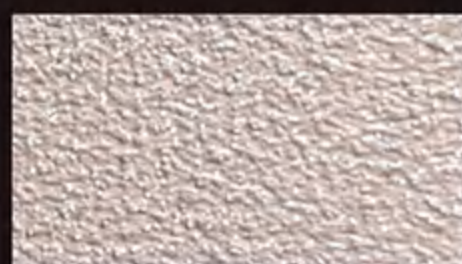
OST-XK-1041



OST-XK-1042



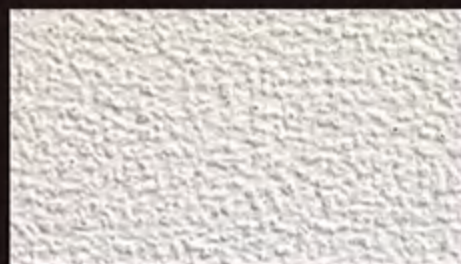
OST-XK-1043



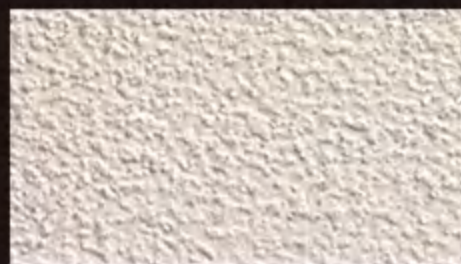
OST-XK-1044



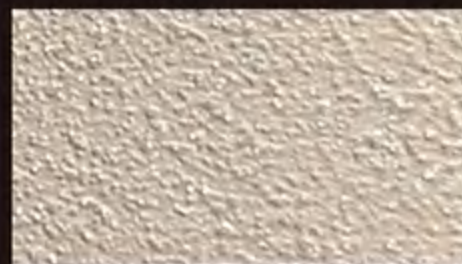
OST-XK-1045



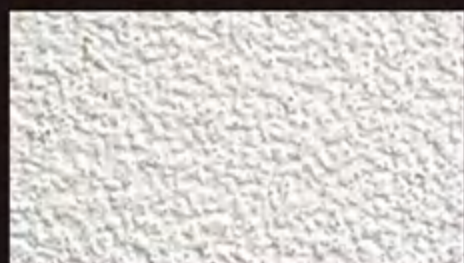
OST-XK-1046



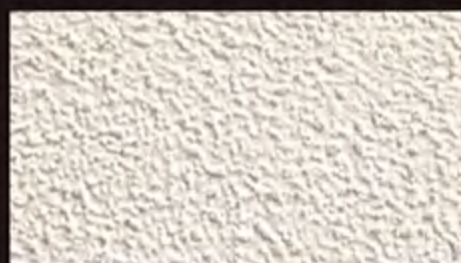
OST-XK-1047



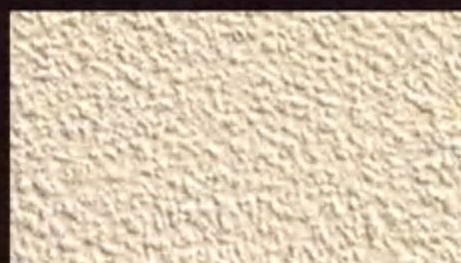
OST-XK-1048



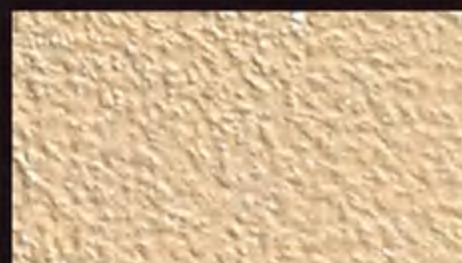
OST-XK-1049



OST-XK-1050



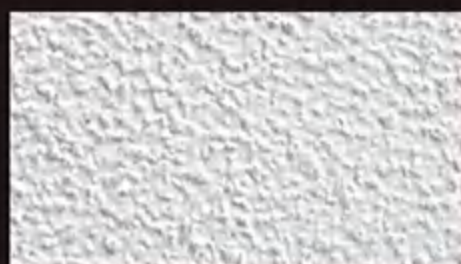
OST-XK-1051



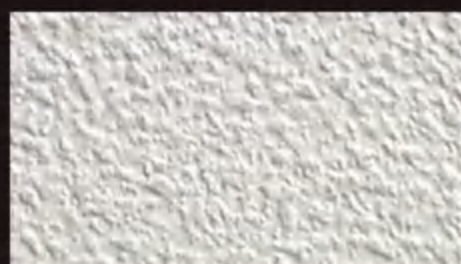
OST-XK-1052



OST-XK-1053



OST-XK-1054



OST-XK-1055



OST-XK-1056



OST-XK-1057



OST-XK-1058



OST-XK-1059



OST-XK-1060



OST-XK-1061



OST-XK-1062



OST-XK-1063



OST-XK-1064



OST-XK-1065



OST-XK-1066



OST-XK-1067



OST-XK-1068



OST-XK-1069



OST-XK-1070



OST-XK-1071



OST-XK-1072



OST-XK-1073



OST-XK-1074



OST-XK-1075



OST-XK-1076



OST-XK-1077



OST-XK-1078



OST-XK-1079



OST-XK-1080



OST-XK-1081



OST-XK-1082



OST-XK-1083



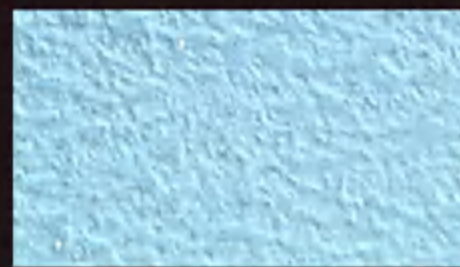
OST-XK-1084



OST-XK-1085



OST-XK-1086



OST-XK-1087



OST-XK-1088



OST-XK-1089



OST-XK-1090



OST-XK-1091



OST-XK-1092

STAR COLOR PAINT

Product Description:

STAR COLOR PAINT shines with brilliant colors just like the colorful stars in the night sky. Differing from all types of traditional crystal stones, STAR COLOR PAINT is applied by roll painting, a new type of water-based eco-friendly paint with high cover rate. Ordinary workers can finish it once by simple roll painting without training. Simple polishing can also improve its outstanding smooth touch and control the density of shiny stars. Using high quality firefly covering or star color paint covering improves its water, stain, scratch resistance and other comprehensive paint performances. It is one of the few decorative paints which is the most cost effective and artistic in the market.

Application Method:

1. Base check: The base shall conform to the national indoor paintwork acceptance criteria. Scrape the putty twice or three times, polish and level to make the plus-minus tolerance of the wall surface less than 2mm
2. Roll paint with alkali-resistant close primer or professional primer.
3. Roll paint STAR COLOR PAINT with sponge once or twice.
4. Polish slight with 360# abrasive wood paper to adjust touch feels and brightness.

Note: When STAR COLOR PAINT is applied on walls in public places, roll paint or spray silicone acrylic varnish, firefly varnish or STAR COLOR PAINT varnish etc., which improves better water and stain resistance. (Attention: Don't roll paint black hole varnish as its strong matte effects will cover the shiny star light)

Color System:

According to the latest trend color in North America, STAR COLOR PAINT launched by has 96 common standard colors, which are sorted and numbered from light to dark, row by row according to international standard color levels. Input the number and then get the standard color. The minimum paint adjustment amount is less than 50 grams. Also, based on consumers demand, high-accuracy auto dispensers can be used to apply color DIY as to make thousands of different duplicated colors. Color paste color dispensing system uses the world top brand water color paste originally imported from Germany, which have excellent color restoration and dyeing rate and has passed the test of German blue Angel's highest environmental protection degree.

Space Application:

The STAR COLOR PAINT has been widely applied in various places, such as villas, clubs, hotels, apartments, shopping malls, schools and office buildings. space applications include lobbies, aisles, public areas, classrooms, living rooms, bedrooms, study rooms, bathrooms, kitchens and other rooms. Details can also be used for wall surface, ceilings, lamp pools, niche, background walls and other internal space. In the Chinese rapidly developing personalized and fashionable interior decoration market, STAR COLOR PAINT will be take an important part in changing space colors and texture.

Environmental Protection Index:

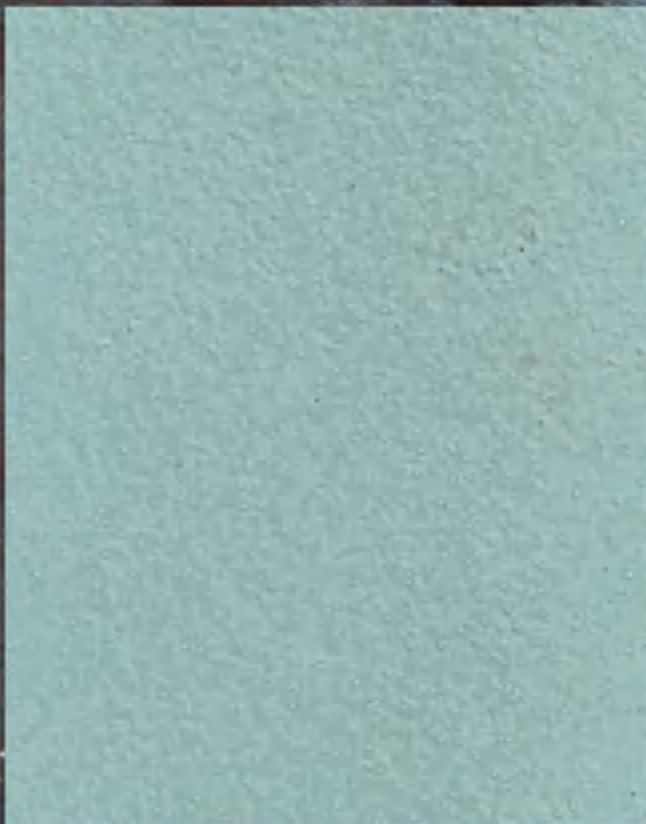
STAR COLOR PAINT has reached the strictest national environmental protection testing standards. In the testing, no hazardous chemicals were detected in all paint. Meanwhile, series products have passed world-known accreditation, French A+ Certification, LEED Test Report, German Blue Angel VOC Test Report.

Testing Items	Standard Requirement	Result	Single Conclusion
Volatile Organic Compounds (VOC)	≤120	Not detected	Conformity
Benzene and free benzene	≤100	Not detected	Conformity
Pb Cd Cr Hg	≤60	Not detected	Conformity

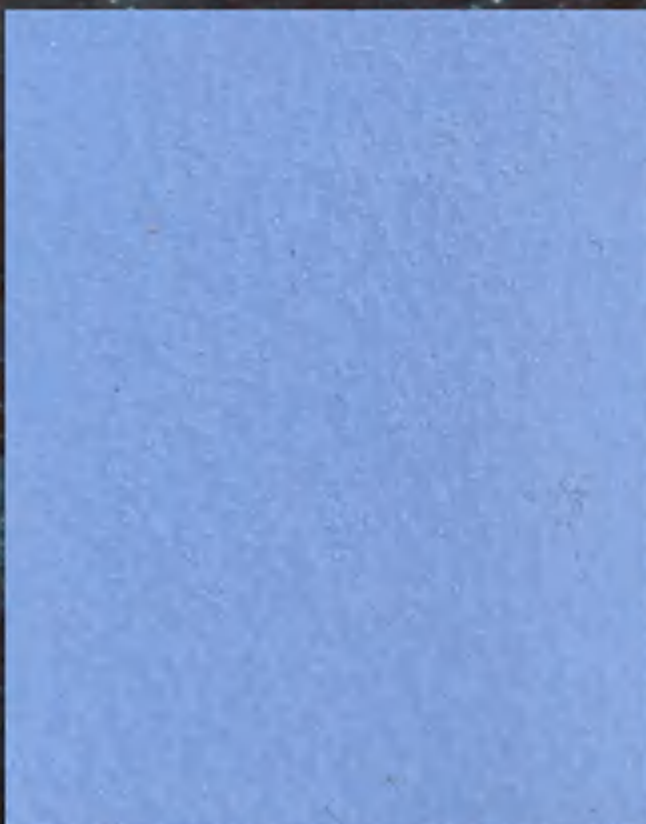
Small color chip in the series color cards will look lighter than the actual color painted on the wall due to human nature visual angle. All colors in the series Color Cards are subject to the color in the big template with copy size 300*300 or above to achieve the same color as the wall surface.



OST-XK-1093(七彩虹)



OST-XK-1094(七彩虹)



OST-XK-1095(七彩虹)

STAR COLOR PAINT

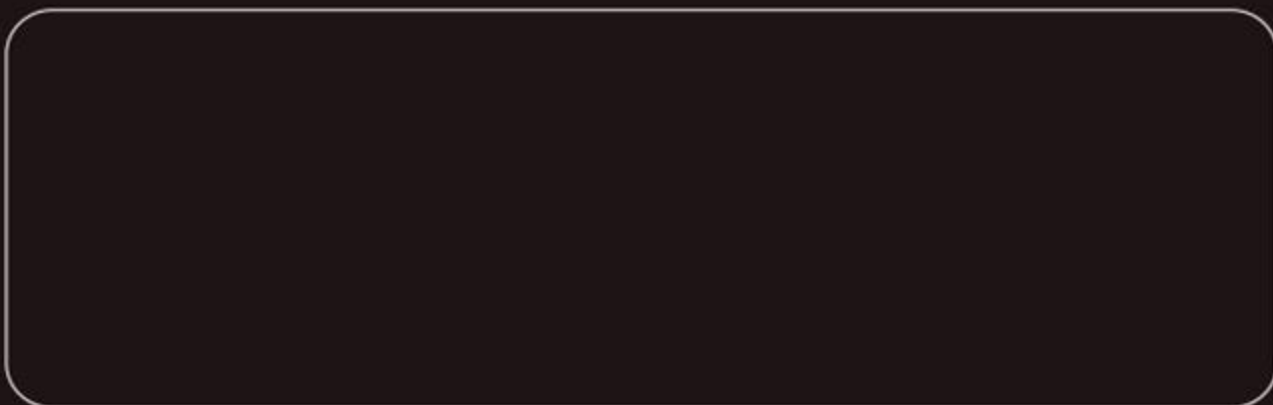
声明：

该系产品色卡 (Color Card)为：全自动电脑调色机 (Auto Dispenser) 调色，所有电脑数据均经过实际操作检测，拥有无与伦比的准确性和可复制性。我方对全部数据拥有知识产权，对未经我方许可，使用该数据库，进行商业活动的公司和个人，我们将追究相应的法律责任。

我方拥有以上全自动电脑调色机，色卡，空间配色系统，产品和工艺的最终解释权。关于该系列产品色卡和工艺的 DIY 应用，我方将在系统专业色彩的培训中，做更详细讲解。

Statement:

The color card of our full series products is tuned by the auto dispenser. All computer data have been tested by real operations and have excellent accuracy and duplication. The company owns the intellectual property for all data. Unauthorized data usage for business activity by company or individual is prohibited and shall bear all responsibilities. reserves the right of final explanation for the above auto dispensers, color cards, space matching system, products and technology. Further explanation about the DIY application series color cards and technology will be discussed in the company's professional color training.



法国环境A+认证
A+ Certification,FR



北美LEED检测
Building LEED Test Report



德国蓝天使VOC检测
BLUE ANGEL Test Report, GER



丹麦国家认证
DANAK accreditation