

PAINT PALETTE

Auto Dispenser Standard Color Card



儿童画板漆

全自动电脑调色机色卡

蛋壳般莹润的光泽，简单滚涂，易修补，防水，耐污性极佳

Gloss like eggshell. Easy for roll painting and repair. Excellent water proof and stain resistance

儿童画板漆

产品介绍：

儿童画板漆，简单滚涂，就可以产生蛋壳般的滑润光泽，迅速将一面普通墙面变成一面色彩斑斓的画板，不需占任何空间，孩子们可任意在上面用水性笔或粉笔，绘画、学习、挥洒天性，直接用水冲洗而不留痕迹，不会损坏，反复使用。同时还具有比普通乳胶漆，更强的遮盖率，光泽度，防水，耐污和更卓越的环保性能。

施工工艺：

1. 基层处理，符合国家室内油工验收标准，腻子批刮二到三遍，打磨平整，墙面正负公差小于2毫米；
2. 滚涂抗碱封闭底漆或专用底漆；
3. 滚涂儿童画板漆两遍（喷涂效果更佳）。

备注：儿童画板漆具有在国际上领先的，优良的施工性和修补性。当墙面出现需要修补的情况，直接滚涂修补，漆膜完整，无补刷痕迹。

色彩系统：

根据北美最新流行色，儿童画板漆共有（152）个常用标准色，色彩从浅及深，按国际标准的色阶逐行排列和编号，输入编号，即可得到标准色，最小调漆量实际测量仅为≤50克。也可根据消费者的实际需求，采用高精度电脑调色机，进行色彩的DIY，从而衍生出可以复制的，成千上万不同的色彩。该调色系统的色浆，采用世界上最顶级的德国品牌原装进口水性色浆，具有无与伦比的色彩还原性和上色率，同时通过了德国蓝天使最高环保等级标准的检测。

适用范围：

儿童画板漆广泛应用到各类场所，如：别墅，会所，酒店，公寓，商场，学校，办公楼等；空间应用如：大堂，过道，公共区域，教室，客厅，卧室，书房，卫生间和厨房等；局部细节可以应用至：墙面，天花，灯池，龕，背景墙等室内空间。在中国迅猛发展的个性化和时尚化的室内装饰领域，儿童画板漆将承担改变空间色彩和肌理的重要角色。

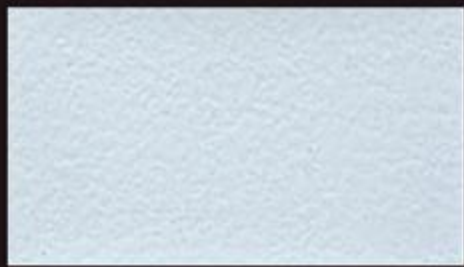
环保指标：

儿童画板漆系列，通过了国家最严格的环保检测标准，所有涂料中的有害物质，均在抽样检测中为：未检出状态。同时该产品，也通过了国际上著名的：法国环保A+认证，北美建筑LEED检测，德国环保蓝天使VOC检测等。

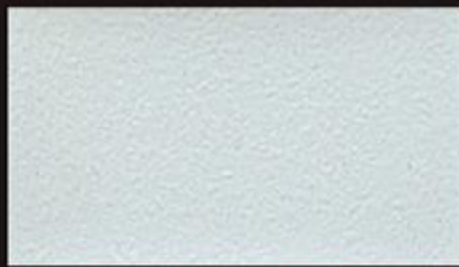
检测项目	标准要求	检测结果	单项结论
挥发物（VOC）	≤120	未检出	符合
苯和游离苯	≤100	未检出	符合
可溶重金属Pb Cd Cr Hg	≤60	均未检出	符合

本系列色卡中的小色块，因为人眼视觉角度的原因，会比实际上墙施工的色彩略浅，系列色卡中的任意色彩，均以复制尺寸300*300及以上大样板的色彩为准，以期达到和墙面尽可能接近的颜色。

浅基系列 LIGHT COLORS



OST-HB-1001



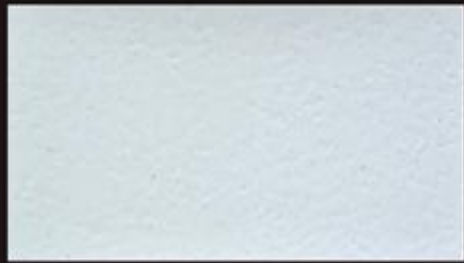
OST-HB-1002



OST-HB-1003



OST-HB-1004



OST-HB-1005



OST-HB-1006



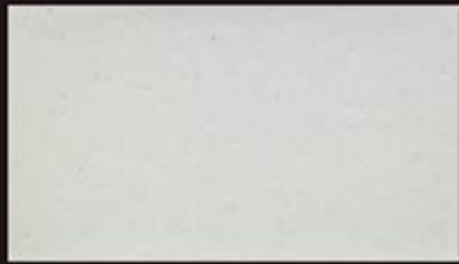
OST-HB-1007



OST-HB-1008



OST-HB-1009



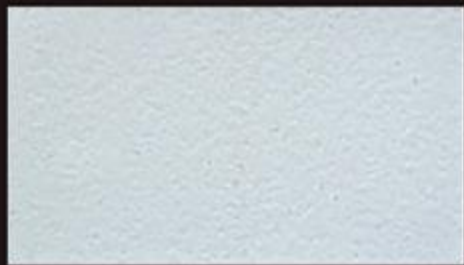
OST-HB-1010



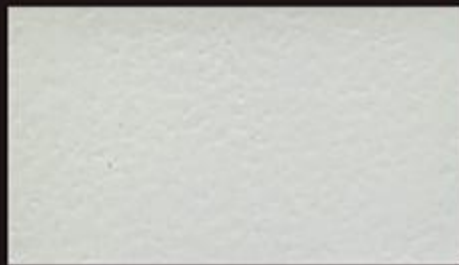
OST-HB-1011



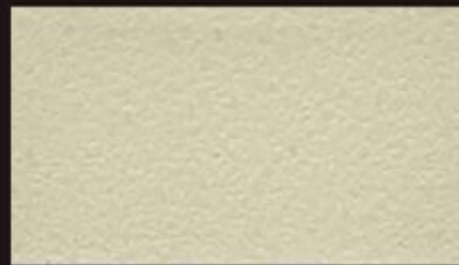
OST-HB-1012



OST-HB-1013



OST-HB-1014



OST-HB-1015



OST-HB-1016



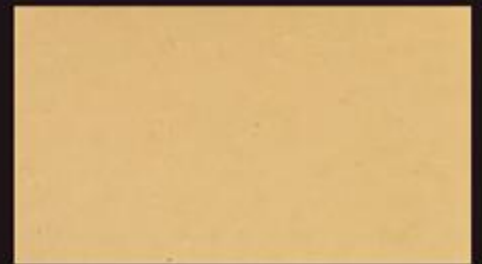
OST-HB-1017



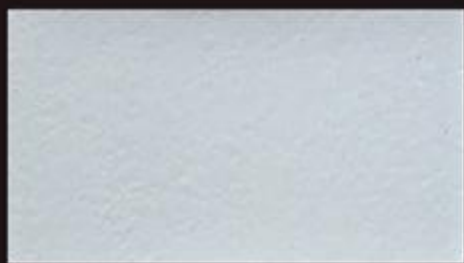
OST-HB-1018



OST-HB-1019



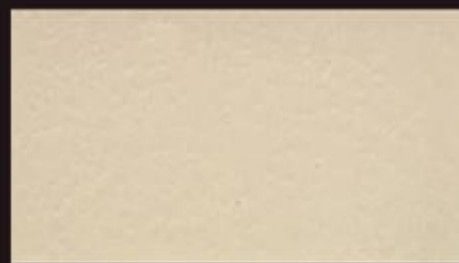
OST-HB-1020



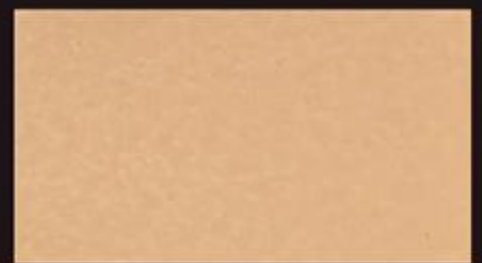
OST-HB-1021



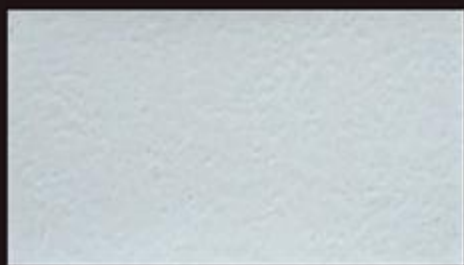
OST-HB-1022



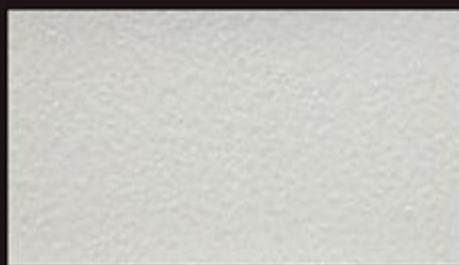
OST-HB-1023



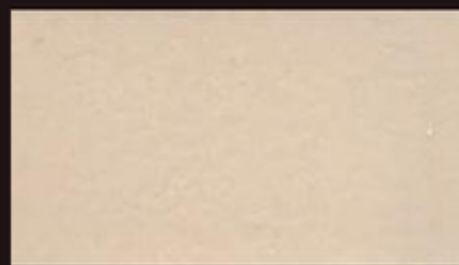
OST-HB-1024



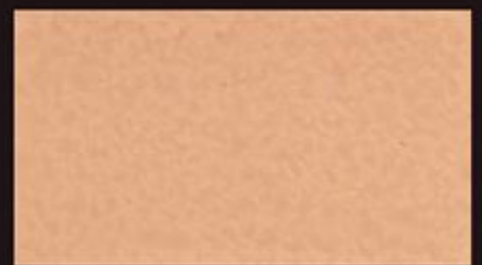
OST-HB-1025



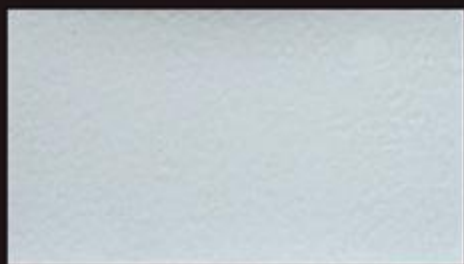
OST-HB-1026



OST-HB-1027



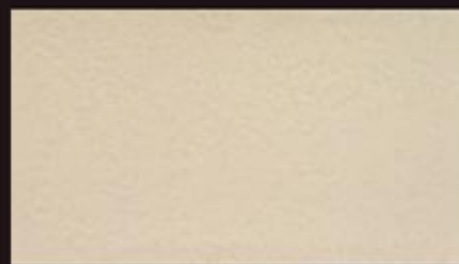
OST-HB-1028



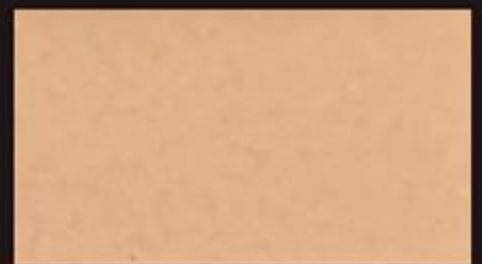
OST-HB-1029



OST-HB-1030

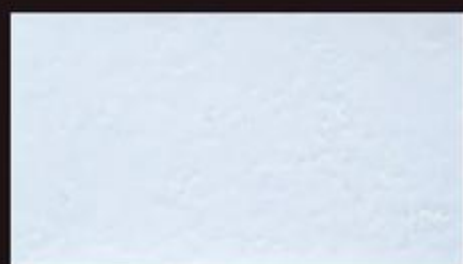


OST-HB-1031



OST-HB-1032

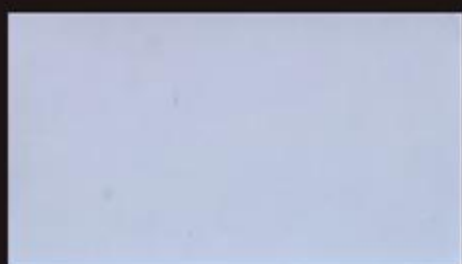
浅基系列 LIGHT COLORS



OST-HB-1033



OST-HB-1034



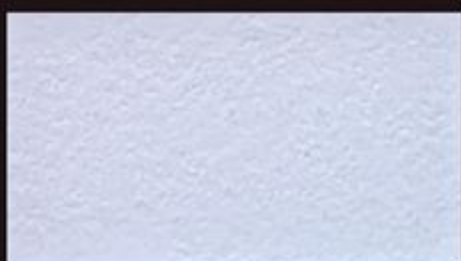
OST-HB-1035



OST-HB-1036



OST-HB-1037



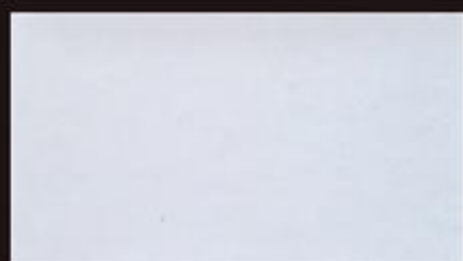
OST-HB-1038



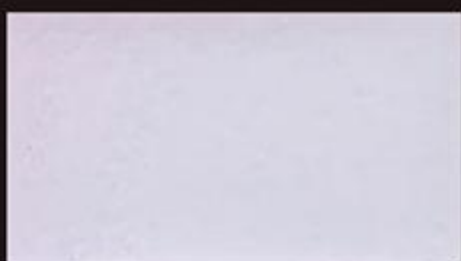
OST-HB-1039



OST-HB-1040



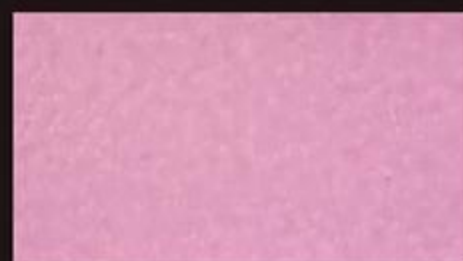
OST-HB-1041



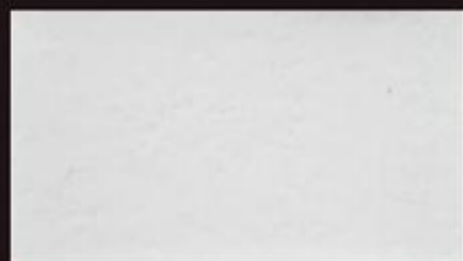
OST-HB-1042



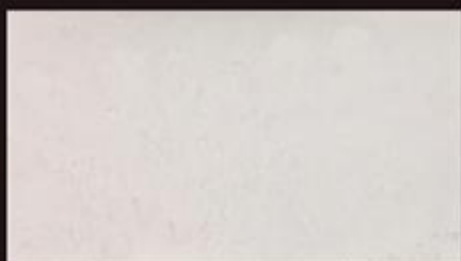
OST-HB-1043



OST-HB-1044



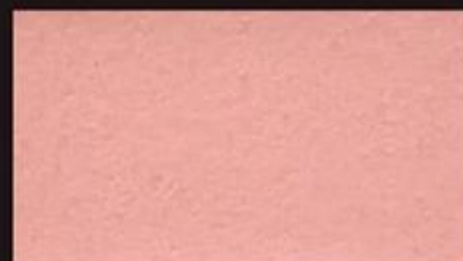
OST-HB-1045



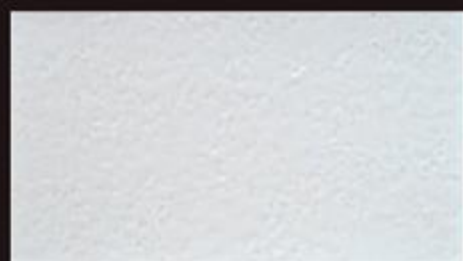
OST-HB-1046



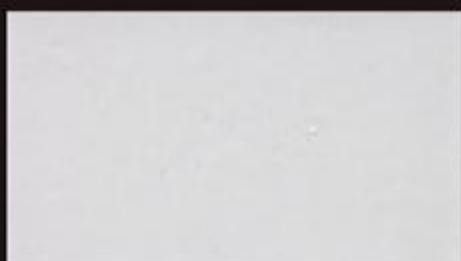
OST-HB-1047



OST-HB-1048



OST-HB-1049



OST-HB-1050



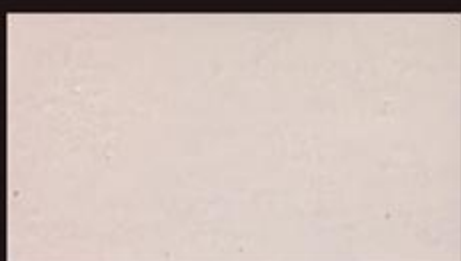
OST-HB-1051



OST-HB-1052



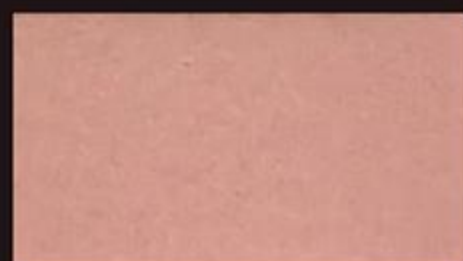
OST-HB-1053



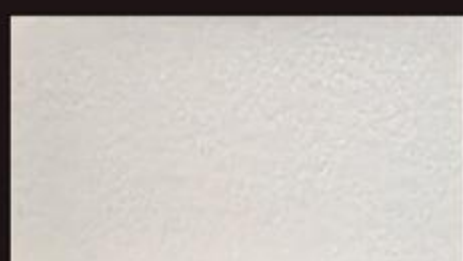
OST-HB-1054



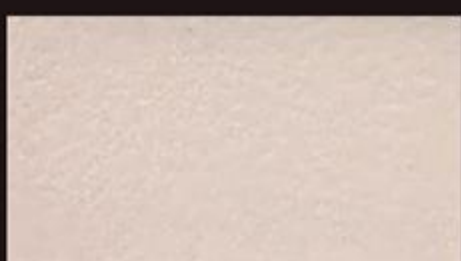
OST-HB-1055



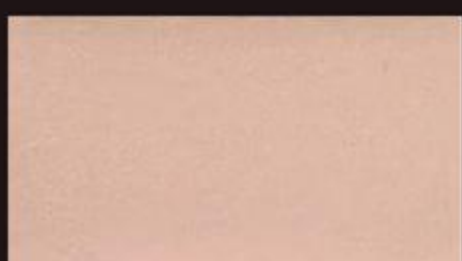
OST-HB-1056



OST-HB-1057



OST-HB-1058



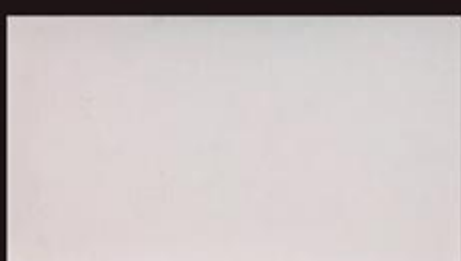
OST-HB-1059



OST-HB-1060



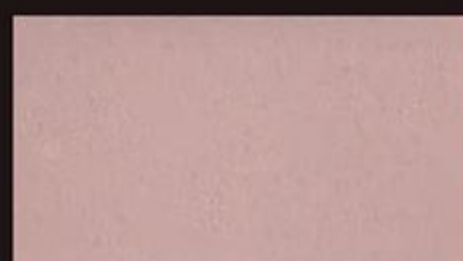
OST-HB-1061



OST-HB-1062

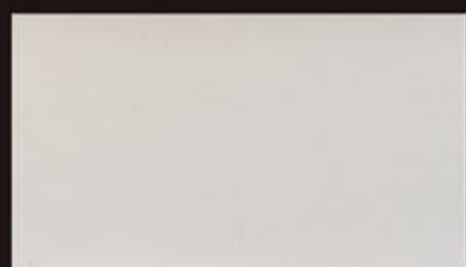


OST-HB-1063

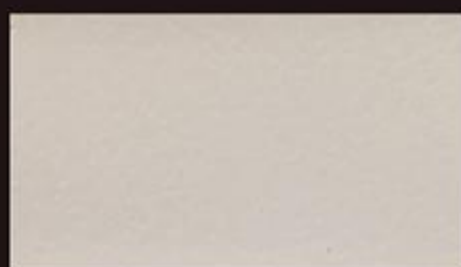


OST-HB-1064

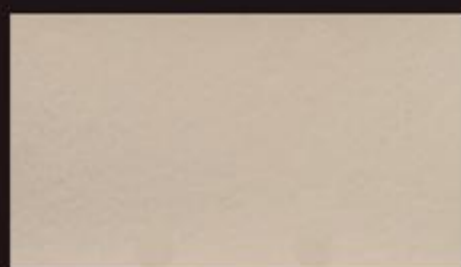
浅基系列 LIGHT COLORS



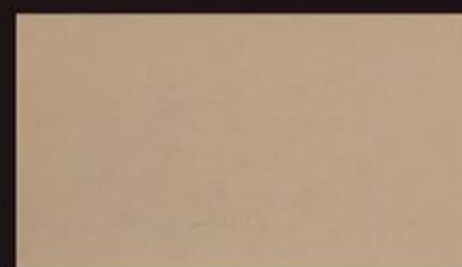
OST-HB-1065



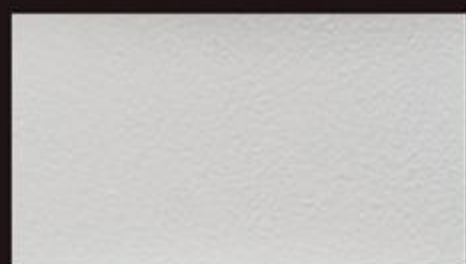
OST-HB-1066



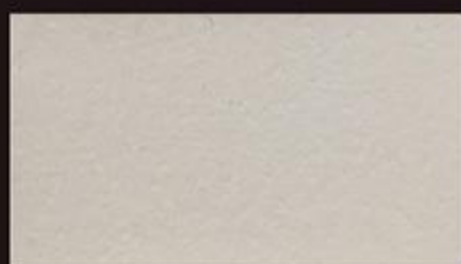
OST-HB-1067



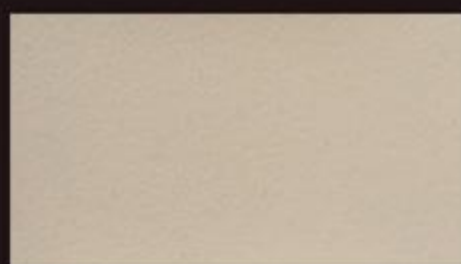
OST-HB-1068



OST-HB-1069



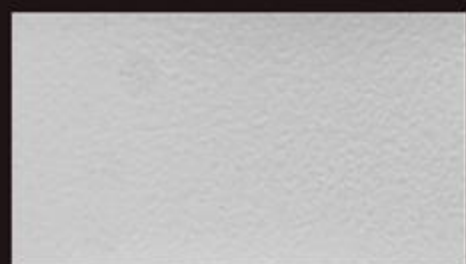
OST-HB-1070



OST-HB-1071



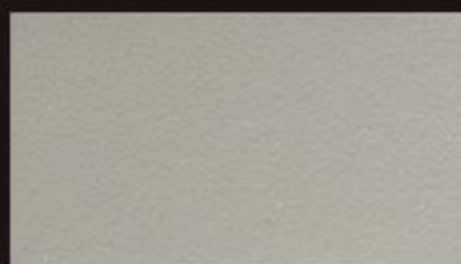
OST-HB-1072



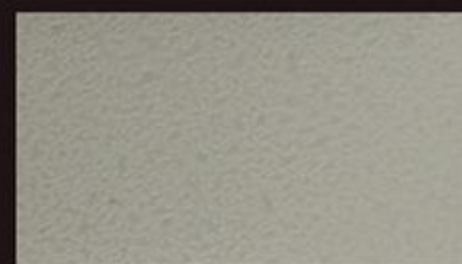
OST-HB-1073



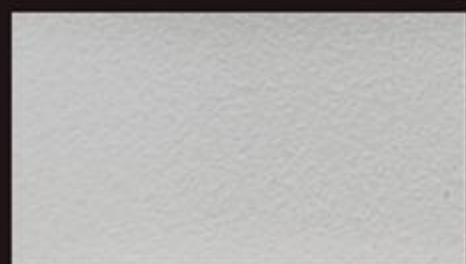
OST-HB-1074



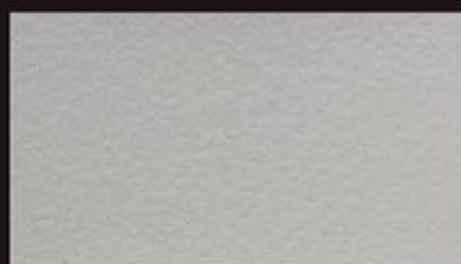
OST-HB-1075



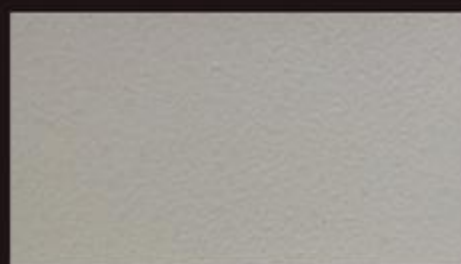
OST-HB-1076



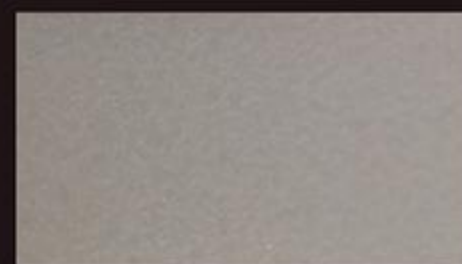
OST-HB-1077



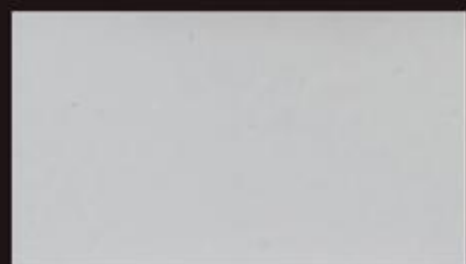
OST-HB-1078



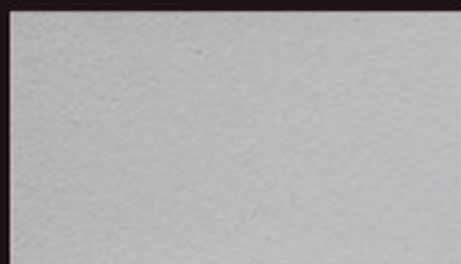
OST-HB-1079



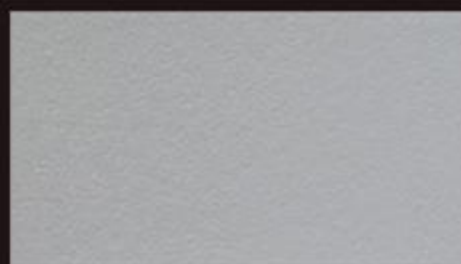
OST-HB-1080



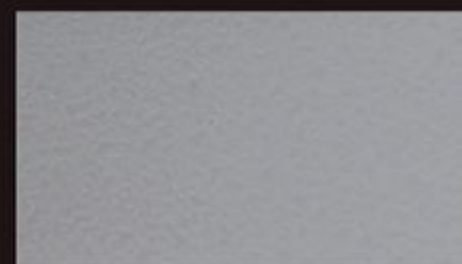
OST-HB-1081



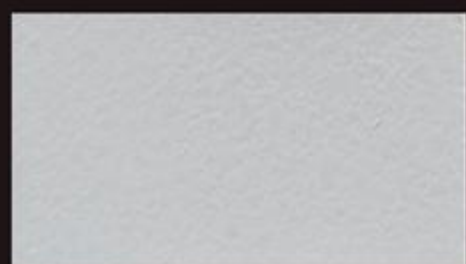
OST-HB-1082



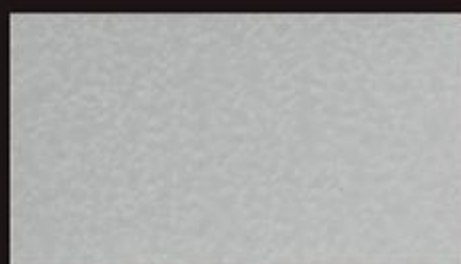
OST-HB-1083



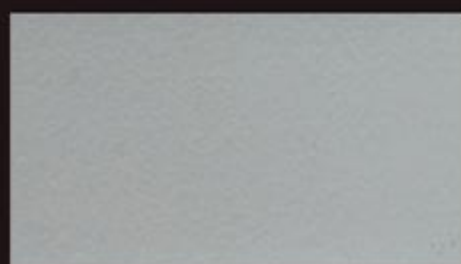
OST-HB-1084



OST-HB-1085



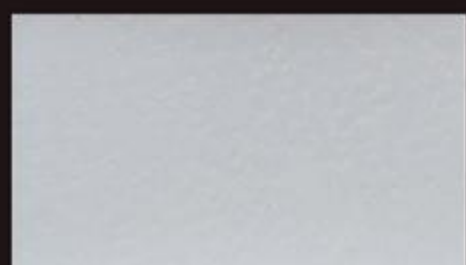
OST-HB-1086



OST-HB-1087



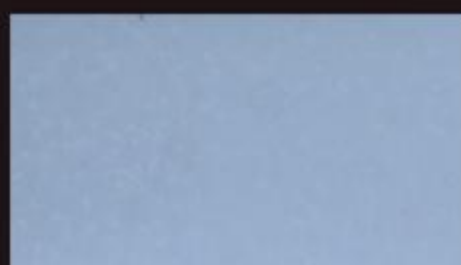
OST-HB-1088



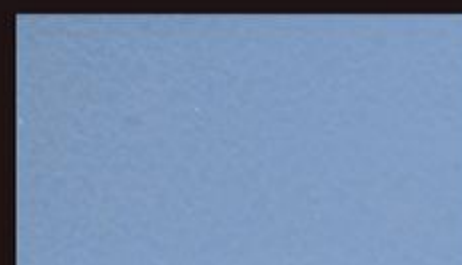
OST-HB-1089



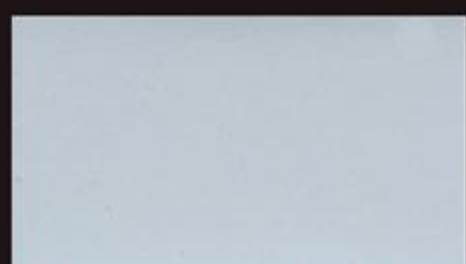
OST-HB-1090



OST-HB-1091



OST-HB-1092



OST-HB-1093



OST-HB-1094



OST-HB-1095



OST-HB-1096

浅基系列 LIGHT COLORS



OST-HB-1097



OST-HB-1098



OST-HB-1099



OST-HB-1100



OST-HB-1101



OST-HB-1102



OST-HB-1103



OST-HB-1104



OST-HB-1105



OST-HB-1106



OST-HB-1107



OST-HB-1108



OST-HB-1109



OST-HB-1110



OST-HB-1111



OST-HB-1112



OST-HB-1113



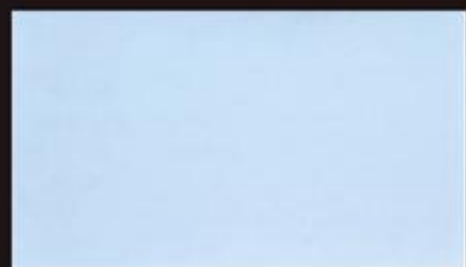
OST-HB-1114



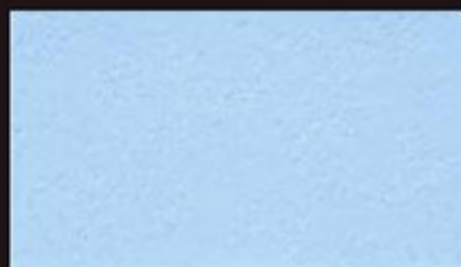
OST-HB-1115



OST-HB-1116



OST-HB-1117



OST-HB-1118



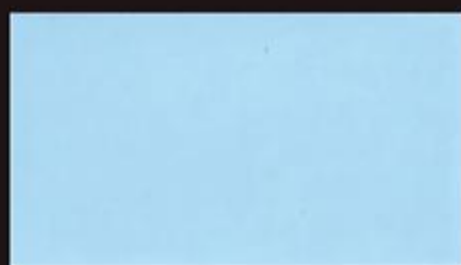
OST-HB-1119



OST-HB-1120



OST-HB-1121



OST-HB-1122



OST-HB-1123



OST-HB-1124



OST-HB-1125



OST-HB-1126



OST-HB-1127



OST-HB-1128

PAINT PALETTE

Product Description:

CHILDREN'S PAINT PALETTE can make eggshell-like smooth gloss by easy roll painting. It turns a normal wall surface into a colorful drawing board. It doesn't take up any space and children can freely draw on it with water-based pens or chinks to study and have fun. It can be washed with water and used again and again, leaving no trace or suffering from damage. Meanwhile, compared to normal emulsion paint, it has stronger covering power, glossiness, water proof, stain resistance and eco-friendly performances.

Application Method:

1. Base check: The base shall conform to the national indoor paintwork acceptance criteria. Scrape the putty twice or three times, polish and level to make the plus-minus tolerance of the wall surface less than 2mm
2. Roll paint alkali-resistant close primer.
3. Roll paint with PAINT PALETTE twice (Spraying has better effects).

Note: Children's PAINT PALETTE is world-leading with superior application and repairable performances. When the wall surface needs repair, repair by roll painting directly, leaving a complete film paint and no repair trace.

Color System:

According to the latest trend color in North America, Children's PAINT PALETTE launched has 152 common standard colors, which are sorted and numbered from light to dark, row by row according to international standard color levels. Input the number and then get the standard color. The minimum paint adjustment amount is less than 50 grams. Also, based on consumers demand, high-accuracy auto dispensers can be used to apply color DIY as to make thousands of different duplicated colors. color paste color dispensing system uses the world top brand water color paste originally imported from Germany, which have excellent color restoration and dyeing rate and has passed the test of German Blue Angel's highest environmental protection degree.

Space Application:

The Children's PAINT PALETTE has been widely applied in various places, such as villas, clubs, hotels, apartments, shopping malls, schools and office buildings. Space applications include lobbies, aisles, public areas, class-rooms, living rooms, bedrooms, study rooms, bathrooms, kitchens and other rooms. Details can also be used for wall surface, ceilings, lamp pools, niche, background walls and other internal space. In the Chinese rapidly developing personalized and fashionable interior decoration market, Children's PAINT PALETTE will be take an important part in changing space colors and texture.

Environmental Protection Index:

The Children's PAINT PALETTE has reached the strictest national environmental protection testing standards. In the testing, no hazardous chemicals were detected in all paint. Meanwhile, series products have passed world-known accreditation, French A+ Certification, LEED Test Report, German Blue Angel VOC Test Report.

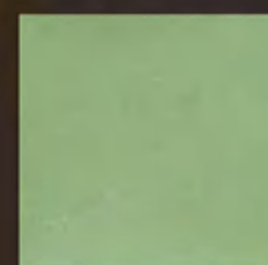
Testing Items	Standard Requirement	Result	Single Conclusion
Volatile Organic Compounds (VOC)	≤120	Not detected	Conformity
Benzene and free benzene	≤100	Not detected	Conformity
Pb Cd Cr Hg	≤60	Not detected	Conformity

Small color chip in the series color cards will look lighter than the actual color painted on the wall due to human nature visual angle. All colors in the series Color Cards are subject to the color in the big template with copy size 300*300 or above to achieve the same color as the wall surface.

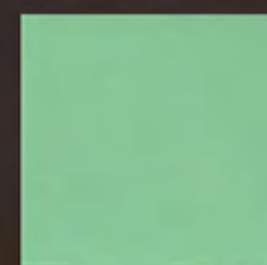
深基系列 DEEP COLORS



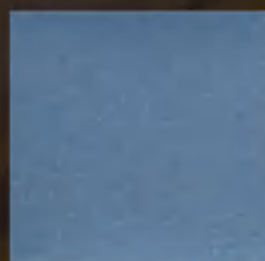
OST-HB-2129



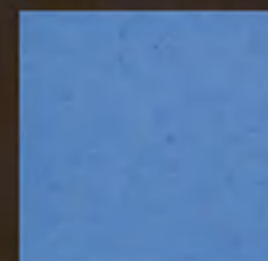
OST-HB-2130



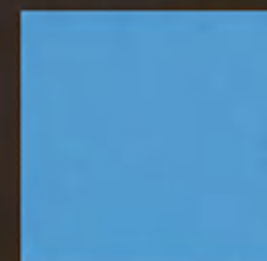
OST-HB-2131



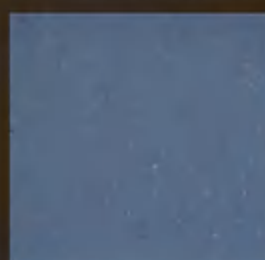
OST-HB-2132



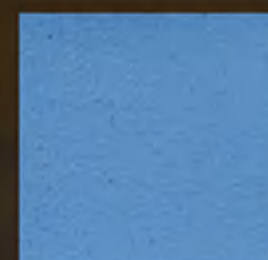
OST-HB-2133



OST-HB-2134



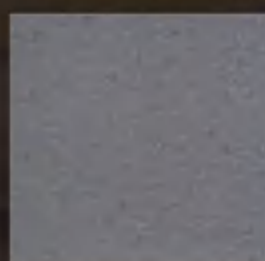
OST-HB-2135



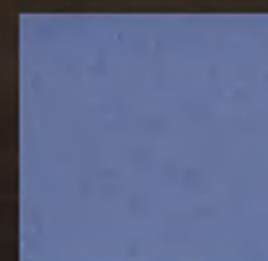
OST-HB-2136



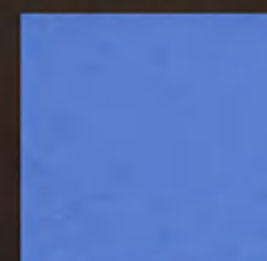
OST-HB-2137



OST-HB-2138



OST-HB-2139



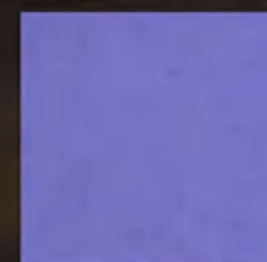
OST-HB-2140



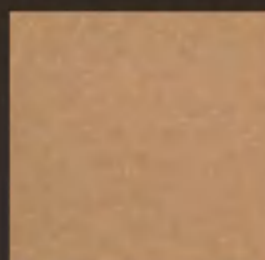
OST-HB-2141



OST-HB-2142



OST-HB-2143



OST-HB-2144



OST-HB-2145



OST-HB-2146



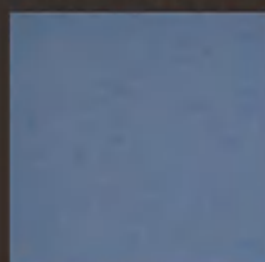
OST-HB-2147



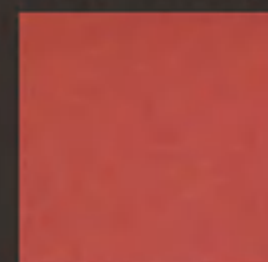
OST-HB-2148



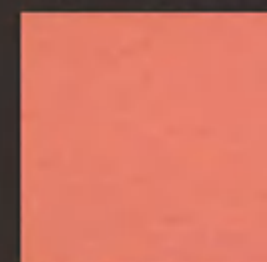
OST-HB-2149



OST-HB-2150



OST-HB-2151



OST-HB-2152

PAINT PALETTE

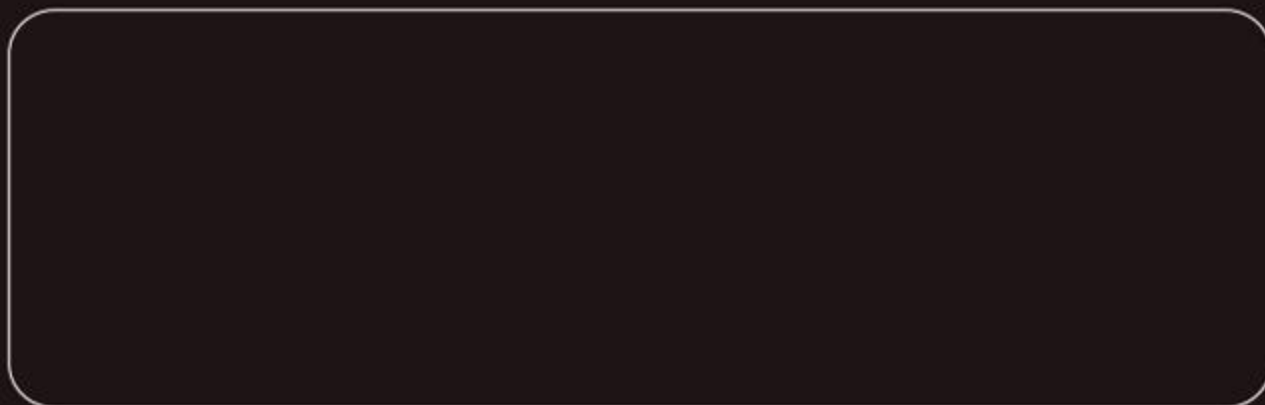
声明：

该系产品色卡 (Color Card) 为：全自动电脑调色机 (Auto Dispenser) 调色，所有电脑数据均经过实际操作检测，拥有无与伦比的准确性和可复制性。我方对全部数据拥有知识产权，对未经我方许可，使用该数据库，进行商业活动的公司和个人，我们将追究相应的法律责任。

我方拥有以上全自动电脑调色机，色卡，空间配色系统，产品和工艺的最终解释权。关于该系列产品色卡和工艺的 DIY 应用，我方将在系统专业色彩的培训中，做更详细讲解。

Statement:

The color card of our full series products is tuned by the auto dispenser. All computer data have been tested by real operations and have excellent accuracy and duplication. The company owns the intellectual property for all data. Unauthorized data usage for business activity by company or individual is prohibited and shall bear all responsibilities. reserves the right of final explanation for the above auto dispensers, color cards, space matching system, products and technology. Further explanation about the DIY application series color cards and technology will be discussed in the company's professional color training.



法国环境A+认证
A+ Certification, FR



北美LEED检测
Building LEED Test Report



德国蓝天使VOC检测
BLUE ANGEL Test Report, GER



丹麦国家认证
DANAK accreditation