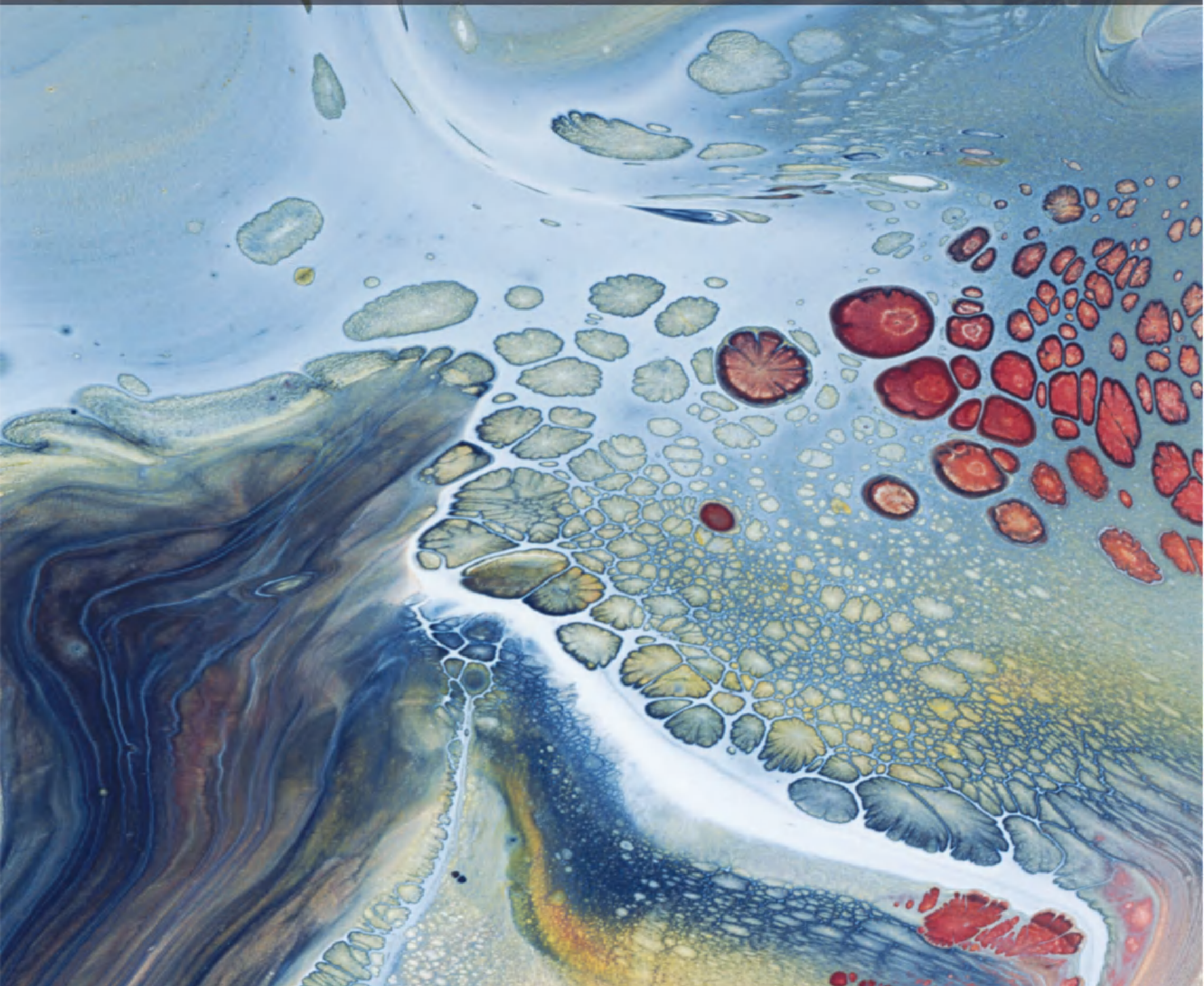


COLOPHONY STUCCO

Auto Dispenser Standard Color Card



欧洲彩玉

全自动电脑调色机色卡

涂料中的极品，翡翠品质，附丽于天，能照天下
Superior grade in paint, jade quality, with sky-clear light

欧洲彩玉

COLOPHONY STUCCO

色彩系统：

根据北美最新流行色，欧洲彩玉共有（96）个常用标准色，色彩从浅及深，按国际标准的色阶逐行排列和编号，输入编号，即可得到标准色，最小调漆量实际测量仅为 ≤ 50 克。也可根据消费者的实际需求，采用高精度电脑调色机，进行色彩的DIY，从而衍生出可以复制的，成千上万不同的色彩。调色系统的色浆，采用世界上最顶级的德国品牌原装进口水性色浆，具有无与伦比的色彩还原性和上色率，同时通过了德国蓝天使最高环保等级标准的检测。

适用范围：

欧洲彩玉广泛应用到各类场所，如：别墅，会所，酒店，公寓，商场，学校，办公楼等；空间应用如：大堂，过道，公共区域，教室，客厅，卧室，书房，卫生间和厨房等；局部细节可以应用至：墙面，天花，灯池，龕，背景墙等室内空间。在中国迅猛发展的个性化和时尚化的室内装饰领域，欧洲彩玉将承担改变空间色彩和肌理的重要角色。

环保指标：

欧洲彩玉系列，通过了国家最严格的环保检测标准，所有涂料中的有害物质，均在抽样检测中为：未检出状态。同时该系列产品，也通过了国际上著名的：法国环保A+认证，北美建筑LEED检测，德国环保蓝天使VOC检测等。

检测项目	标准要求	检测结果	单项结论
挥发物（VOC）	≤ 120	未检出	符合
苯和游离苯	≤ 100	未检出	符合
可溶重金属Pb Cd Cr Hg	≤ 60	均未检出	符合

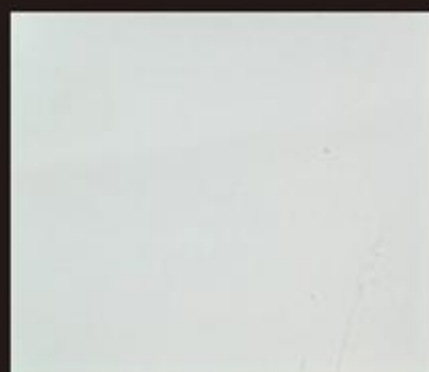
本系列色卡中的小色块，因为人眼视觉角度的原因，会比实际上墙施工的色彩略浅，系列色卡中的任意色彩，均以复制尺寸300*300及以上大样板的色彩为准，以期达到和墙面尽可能接近的颜色。

欧洲彩玉 COLOPHONY STUCCO

产品介绍：

欧洲彩玉，起源于欧洲的墙面装饰性灰泥。通过简单批刮，产生玉石般光泽和手感的一类高级涂料。市面上一般以德国厂家生产的该类产品为优。欧洲彩玉具有业内极高的亮度等级和简单施工性，配合96色的标准色，打造出无比绚丽和高贵的玉石墙面。同时外墙版的欧洲彩玉，匹配外墙色浆，也可以用于外墙施工，质量保证超过10年。

浅基系列 LIGHT COLORS



OST-OC-1001



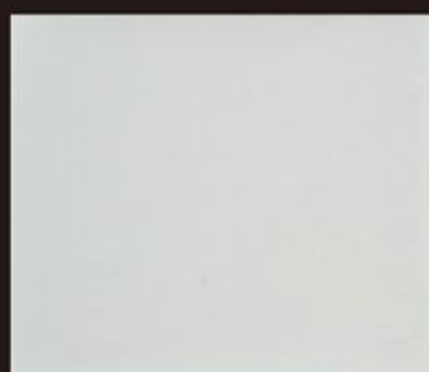
OST-OC-1002



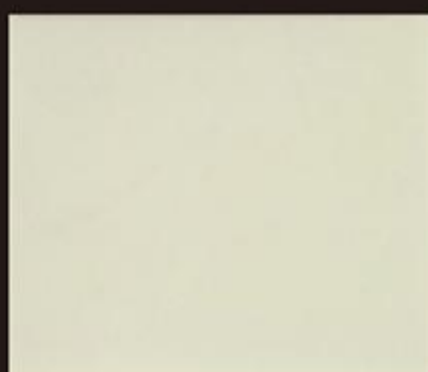
OST-OC-1003



OST-OC-1004



OST-OC-1005



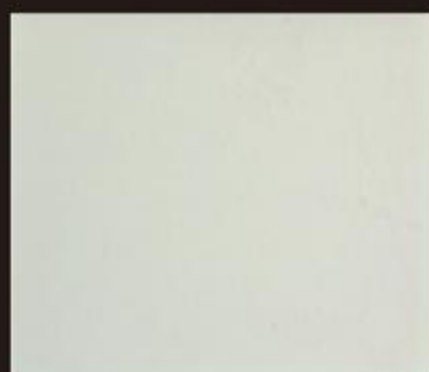
OST-OC-1006



OST-OC-1007



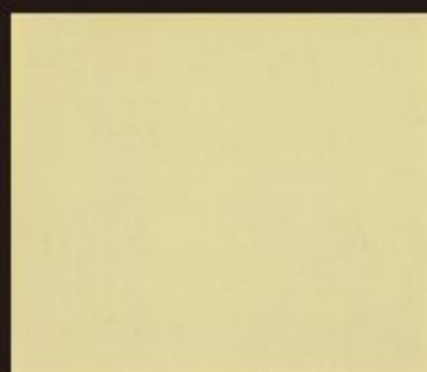
OST-OC-1008



OST-OC-1009



OST-OC-1010



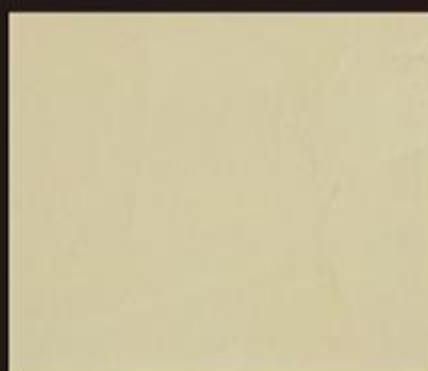
OST-OC-1011



OST-OC-1012



OST-OC-1013



OST-OC-1014



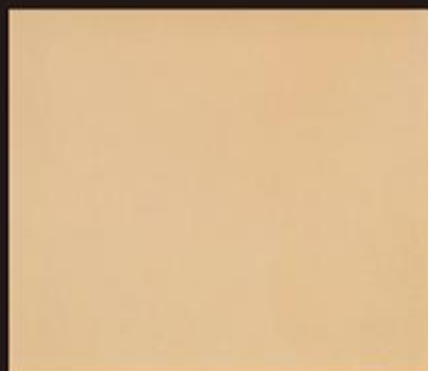
OST-OC-1015



OST-OC-1016



OST-OC-1017



OST-OC-1018



OST-OC-1019



OST-OC-1020



OST-OC-1021



OST-OC-1022



OST-OC-1023



OST-OC-1024



OST-OC-1025



OST-OC-1026



OST-OC-1027



OST-OC-1028



OST-OC-1029



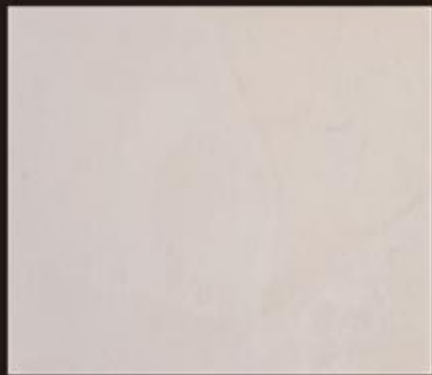
OST-OC-1030



OST-OC-1031



OST-OC-1032



OST-OC-1033



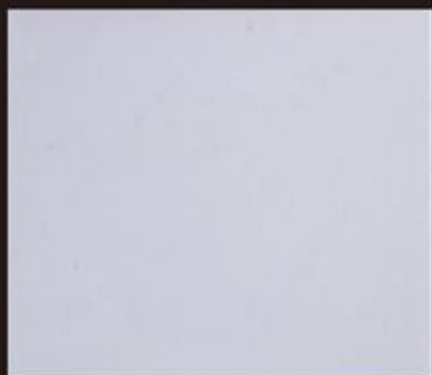
OST-OC-1034



OST-OC-1035



OST-OC-1036



OST-OC-1037



OST-OC-1038



OST-OC-1039



OST-OC-1040

Product Description:

COLOPHONY STUCCO originated in European wall decorative plaster. A class of high-grade paint that produces a jade-like sheen and feel through simple scratching. This type of product, which is generally produced by German manufacturers in the market, is excellent. COLOPHONY STUCCO has the industry's high brightness level and simple construction, with 96 colors of standard colors, to create a very beautiful and noble jade wall. At the same time, the COLOPHONY STUCCO of the external wall, matching the external wall color paste, can also be used for exterior wall construction, quality assurance for more than 10 years.

施工工艺：

1. 基层处理，符合国家室内油工验收标准，腻子批刮二到三遍，打磨平整，墙面正负公差小于2毫米；
2. 涂抗碱封闭底漆或专用底漆；
3. 批刮第一遍底；
4. 批刮第二遍造型；
5. 用灰刀收光。

备注：欧洲彩玉批刮厚度不超过 1毫米，直接用灰刀收光，可以达玉石级光泽。凡是用抛光机，打蜡等进行抛光的，属于非正常施工，由此产生的任何质量问题，均不属于公司承诺的质量保证范畴。



OST-OC-1041



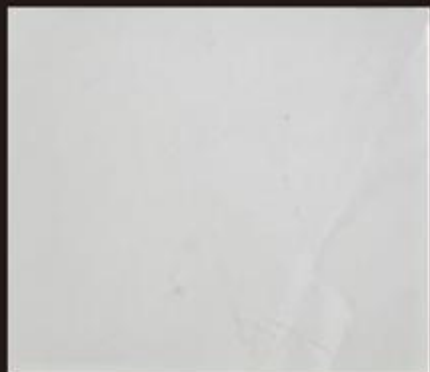
OST-OC-1042



OST-OC-1043



OST-OC-1044



OST-OC-1045



OST-OC-1046



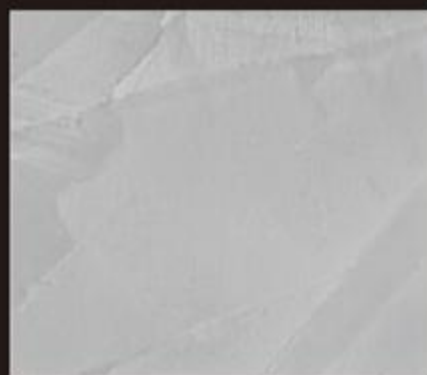
OST-OC-1047



OST-OC-1048



OST-OC-1049



OST-OC-1050



OST-OC-1051



OST-OC-1052



OST-OC-1053



OST-OC-1054



OST-OC-1055



OST-OC-1056



OST-OC-1057



OST-OC-1058



OST-OC-1059



OST-OC-1060



OST-OC-1061



OST-OC-1062



OST-OC-1063



OST-OC-1064



OST-OC-1065



OST-OC-1066



OST-OC-1067



OST-OC-1068



OST-OC-1069



OST-OC-1070



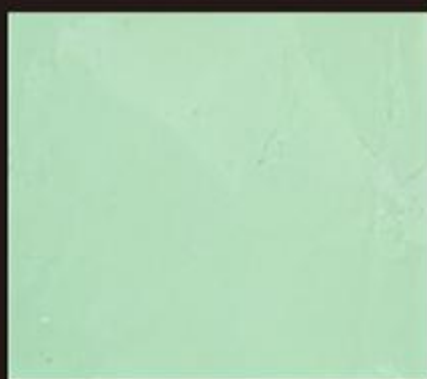
OST-OC-1071



OST-OC-1072



OST-OC-1073



OST-OC-1074



OST-OC-1075



OST-OC-1076



OST-OC-1077



OST-OC-1078



OST-OC-1079



OST-OC-1080

Application Method:

1. Base check: The base shall conform to the national indoor paintwork acceptance criteria. Scrape the putty twice or three times, polish and level to make the plus-minus tolerance of the wall surface less than 2mm
2. Paint with alkali-resistant close primer or professional primer.
3. Scrape on the base. 4. Scrape second time for shaping. 5. Use trowel for polishing.

Note: When the thickness of COLOPHONY STUCCO is less than 1mm, use trowel directly for polishing, which can achieve jade class sheen. Any polishing with polishing machine or wax belongs to abnormal application. Any quality problems resulting from this situation don't belong in quality assurance.

深基系列 DEEPCOLORS



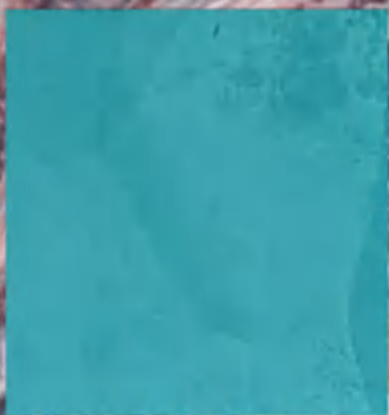
OST-OC-2081



OST-OC-2086



OST-OC-2091



OST-OC-2082



OST-OC-2087



OST-OC-2092



OST-OC-2083



OST-OC-2088



OST-OC-2093



OST-OC-2084



OST-OC-2089



OST-OC-2094



OST-OC-2085



OST-OC-2090



OST-OC-2095

Color System:

According to the latest trend color in North America, COLOPHONY STUCCO launched has 97 common standard colors, which are sorted and numbered from light to dark, row by row according to international standard color levels. Input the number and then get the standard color. The minimum paint adjustment amount is less than 50 grams. Also, based on consumers demand, high-accuracy auto dispensers can be used to apply color DIY as to make thousands of different duplicated colors. Color paste of color dispensing system uses the world top brand water color paste originally imported from Germany, which have excellent color restoration and dyeing rate and has passed the test of German Blue Angel's highest environmental protection degree.

Space Application:

The COLOPHONY STUCCO has been widely applied in various places, such as villas, clubs, hotels, apartments, shopping malls, schools and office buildings. Space applications include lobbies, aisles, public areas, classrooms, living rooms, bedrooms, study rooms, bathrooms, kitchens and other rooms. Details can also be used for wall surface, ceilings, lamp pools, niche, background walls and other internal space. In the Chinese rapidly developing personalized and fashionable interior decoration market, COLOPHONY STUCCO will be take an important part in changing space colors and texture.

Environmental Protection Index:

COLOPHONY STUCCO has reached the strictest national environmental protection testing standards. In the testing, no hazardous chemicals were detected in all paint. Meanwhile, series products have passed world-known accreditation, French A+ Certification, LEED Test Report, German Blue Angel VOC Test Report.

Testing Items	Standard Requirement	Result	Single Conclusion
Volatile Organic Compounds (VOC)	≤120	Not detected	Conformity
Benzene and free benzene	≤100	Not detected	Conformity
Pb Cd Cr Hg	≤60	Not detected	Conformity

Small color chip in the series color cards will look lighter than the actual color painted on the wall due to human nature visual angle. All colors in the series Color Cards are subject to the color in the big template with copy size 300*300 or above to achieve the same color as the wall surface.

COLOPHONY STUCCO

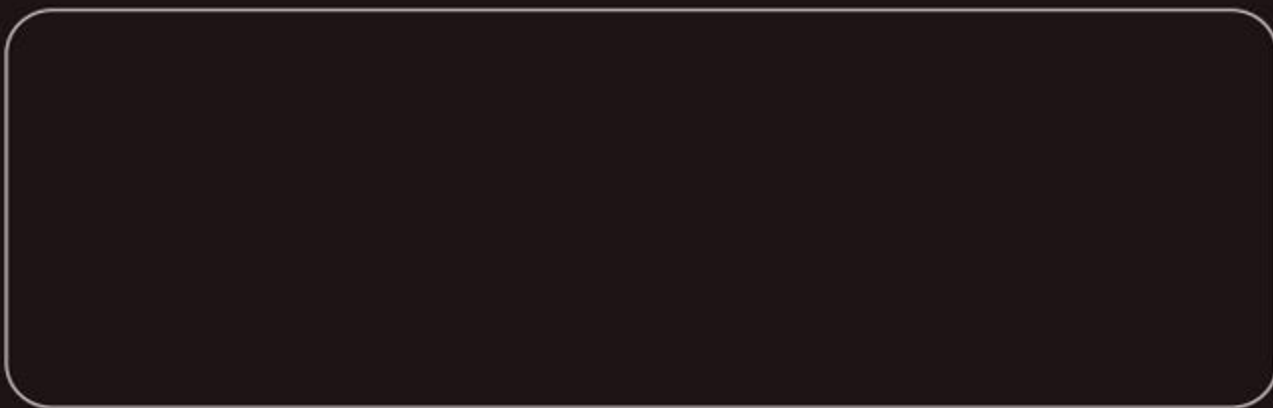
声明：

该系产品色卡 (Color Card)为：全自动电脑调色机 (Auto Dispenser) 调色，所有电脑数据均经过实际操作检测，拥有无与伦比的准确性和可复制性。我方对全部数据拥有知识产权，对未经我方许可，使用该数据库，进行商业活动的公司和个人，我们将追究相应的法律责任。

我方拥有以上全自动电脑调色机，色卡，空间配色系统，产品和工艺的最终解释权。关于该系列产品色卡和工艺的 DIY 应用，我方将在系统专业色彩的培训中，做更详细讲解。

Statement:

The color card of our full series products is tuned by the auto dispenser. All computer data have been tested by real operations and have excellent accuracy and duplication. The company owns the intellectual property for all data. Unauthorized data usage for business activity by company or individual is prohibited and shall bear all responsibilities. reserves the right of final explanation for the above auto dispensers, color cards, space matching system, products and technology. Further explanation about the DIY application series color cards and technology will be discussed in the company's professional color training.



法国环境A+认证
A+ Certification,FR



北美LEED检测
Building LEED Test Report



德国蓝天使VOC检测
BLUE ANGEL Test Report, GER



丹麦国家认证
DANAK accreditation