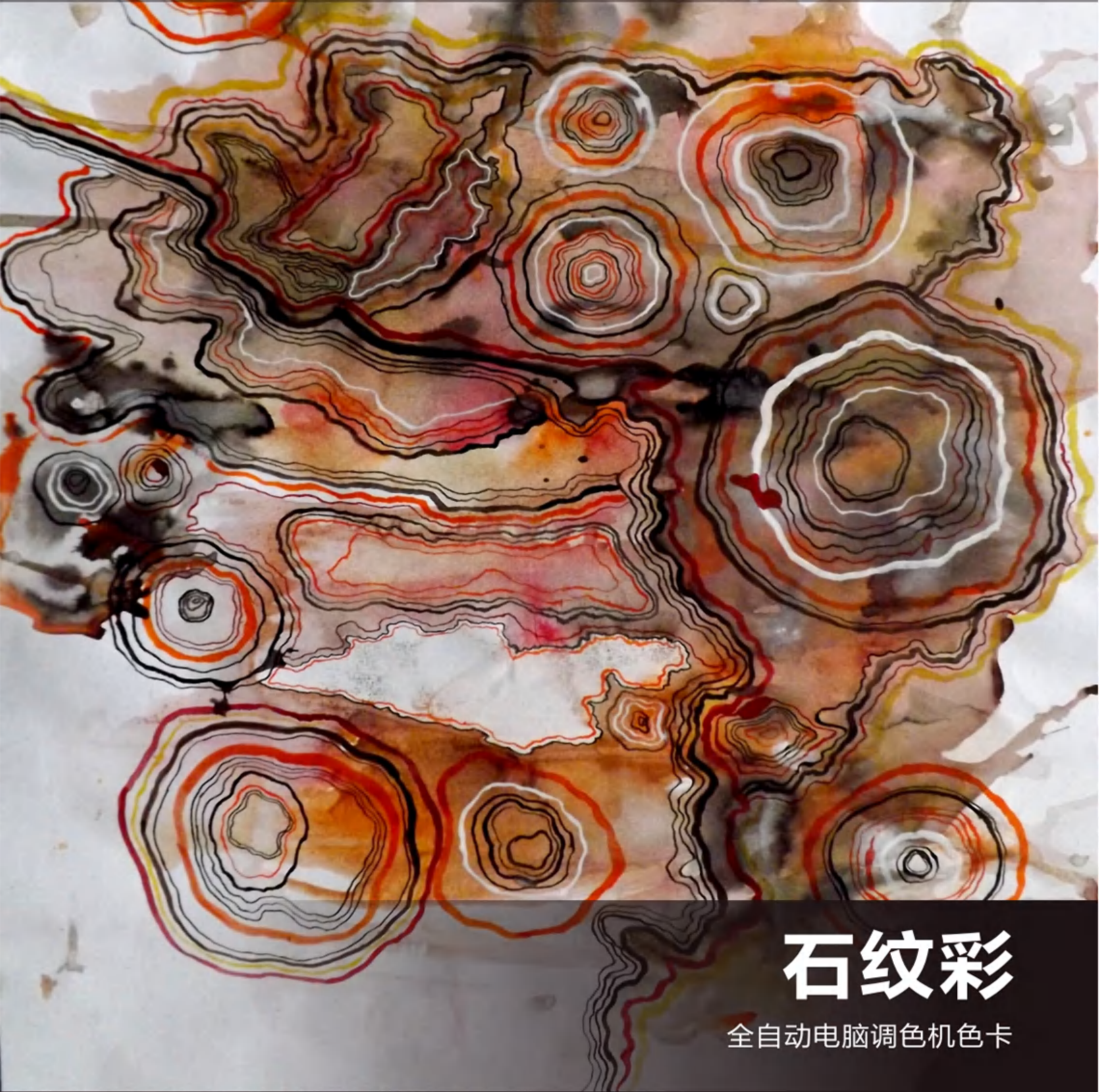


SKIN MARBLE

Auto Dispenser Standard Color Card



石纹彩

全自动电脑调色机色卡

大理石般的自然花纹，简单别致的施工手法

Marble-like natural texture, simple and elegant application



OST-SW-1052

石纹彩

色彩系统：

根据北美最新流行色，石纹彩系列共有（52）个常用标准色，色彩从浅及深，按国际标准的色阶逐行排列和编号，输入编号，即可得到标准色，最小调漆量实际测量仅为 ≤ 50 克。也可根据消费者的实际需求，采用高精度电脑调色机，进行色彩的DIY，从而衍生出可以复制的，成千上万不同的色彩。调色系统的色浆，采用世界上最顶级的德国品牌原装进口水性色浆，具有无与伦比的色彩还原性和上色率，同时通过了德国蓝天使最高环保等级标准的检测。

适用范围：

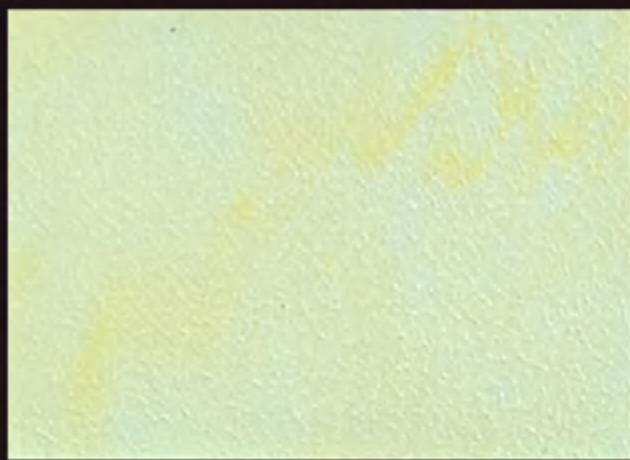
石纹彩系列广泛应用到各类场所，如：别墅，会所，酒店，公寓，商场，学校，办公楼等；空间应用如：大堂，过道，公共区域，教室，客厅，卧室，书房，卫生间和厨房等；局部细节可以应用至：墙面，天花，灯池，龕，背景墙等室内空间。在中国迅猛发展的个性化和时尚化的室内装饰领域，石纹彩系列将承担改变空间色彩和肌理的重要角色。

环保指标：

石纹彩系列系列，通过了国家最严格的环保检测标准，所有涂料中的有害物质，均在抽样检测中为：未检出状态。同时该系列产品，也通过了国际上著名的：法国环保A+认证，北美建筑 LEED 检测，德国环保蓝天使VOC检测等。

检测项目	标准要求	检测结果	单项结论
挥发物（VOC）	≤ 120	未检出	符合
苯和游离苯	≤ 100	未检出	符合
可溶重金属Pb Cd Cr Hg	≤ 60	均未检出	符合

本系列色卡中的小色块，因为人眼视觉角度的原因，会比实际上墙施工的色彩略浅，系列色卡中的任意色彩，均以复制尺寸300*300及以上大样板的色彩为准，以期达到和墙面尽可能接近的颜色。



OST-SW-1001



OST-SW-1002



OST-SW-1003



OST-SW-1004



OST-SW-1005



OST-SW-1006



OST-SW-1007



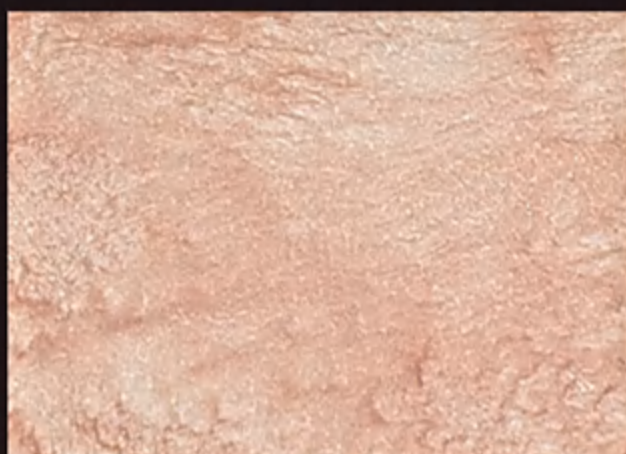
OST-SW-1008



OST-SW-1009



OST-SW-1010



OST-SW-1011



OST-SW-1012



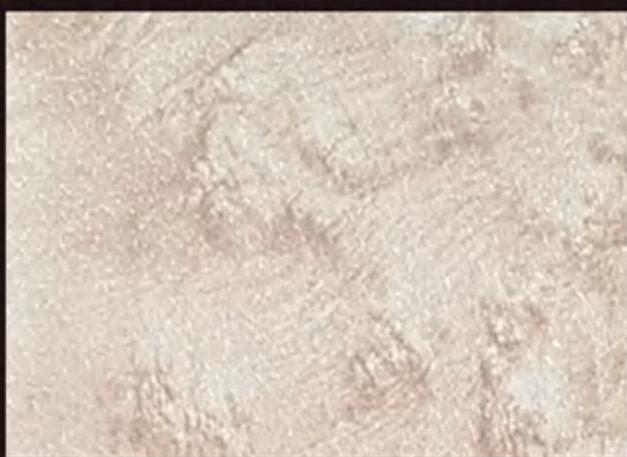
OST-SW-1013



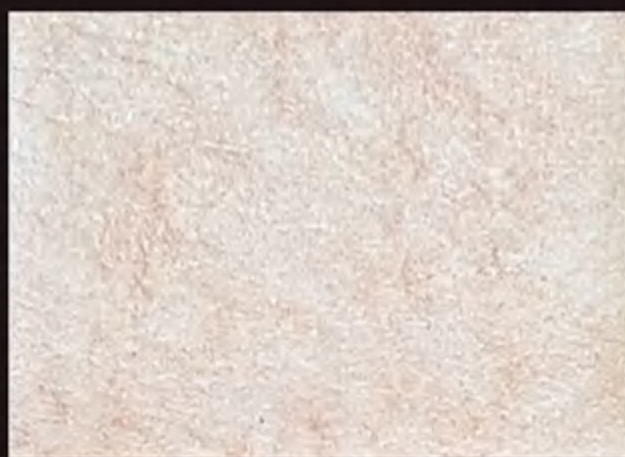
OST-SW-1014



OST-SW-1015



OST-SW-1016



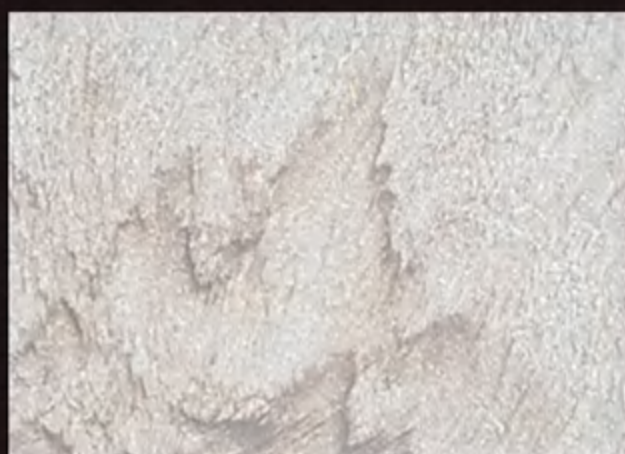
OST-SW-1017



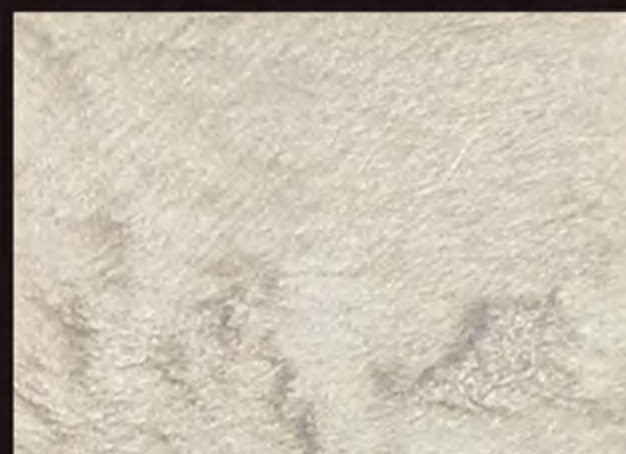
OST-SW-1018



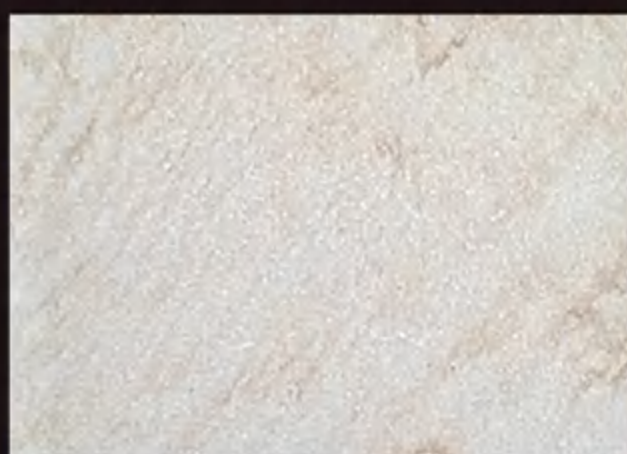
OST-SW-1019



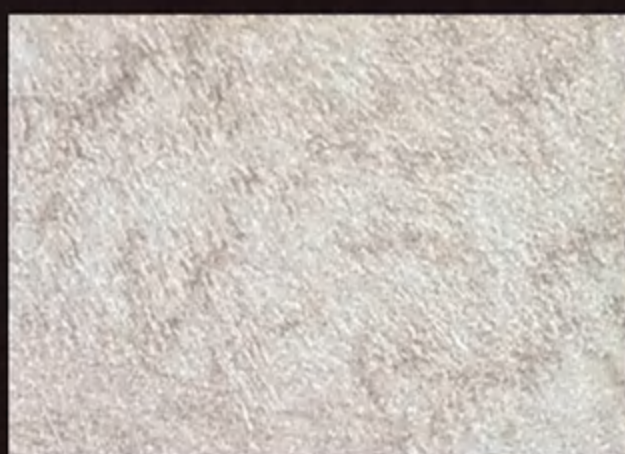
OST-SW-1020



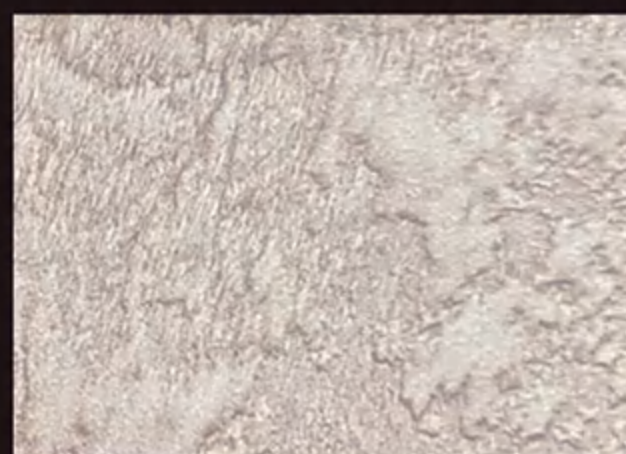
OST-SW-1021



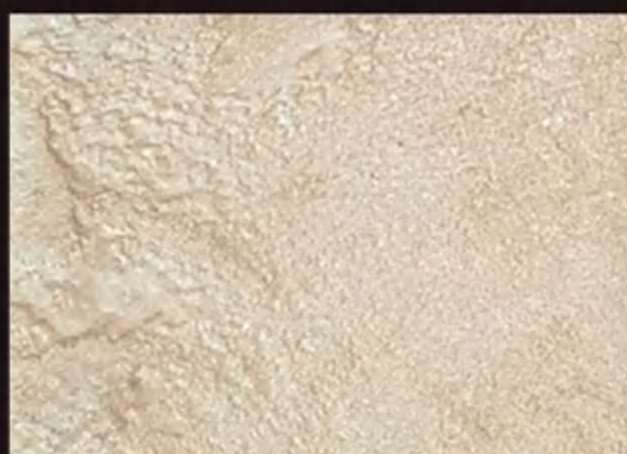
OST-SW-1022



OST-SW-1023



OST-SW-1024



OST-SW-1025



OST-SW-1026



OST-SW-1027

产品介绍：

石纹彩是艺术涂料行业一款经典的产品，调色时，色彩还原度很高，简单揉搓，就可以产生自然的大理石纹理，并具有特殊的金属反光。石纹彩由于工艺简单，施工速度快，也可以直接用于外墙，制作各类外墙大理石效果。当然，石纹彩也可以配合缓干剂，直接当做 GLAZE 使用，是内墙各类复古墙面的优秀擦色类涂料。

Product Description:

SKIN MARBLE is a classic product in the art paint industry. During dispensing, it has very high color restoration. By simple rubbing, it can create natural marble texture and unique reflective metallic sheen. SKIN MARBLE has simple production process and fast application speed, it can be used on external walls, creating marble effects for various external walls. SKIN MARBLE can be certainly used as GLAZE matched with retarders and serve as excellent brush-off paint for various vintage internal walls.



OST-SW-1028



OST-SW-1029



OST-SW-1030



OST-SW-1031



OST-SW-1032



OST-SW-1033



OST-SW-1034



OST-SW-1035



OST-SW-1036



施工工艺：

1. 基层处理，符合国家室内油工验收标准，腻子批刮二到三遍，打磨平整，墙面正负公差小于2毫米；
2. 滚涂抗碱封闭底漆。
3. 滚涂专用蛋壳光乳胶漆
4. 用海藻绵上色，用海绵揉搓。
5. 也可以配合缓干剂，当成各类高档釉料，复合擦色。

备注：石纹彩，用海藻绵造型，配合缓干剂，金属漆等釉料，可以制作出各类复古的艺术效果。正品石纹彩耐擦洗性很高，涂膜厚度不超过0.15毫米，可直接应用于外墙。

Application Method:

1. Base check: The base shall conform to the national indoor paintwork acceptance criteria. Scrape the putty twice or three times, polish and level to make the plus-minus tolerance of the wall surface less than 2mm
2. Roll paint with alkali-resistant close primer or professional primer.
3. Roll paint special egg-shell emulsion paint.
4. Color with seaweed sponge and rub with sponge.
5. Coordinated with slow drying, it can serve as various high class glazes for complex brush-off.

Note: SKIN MARBLE, modeled by seaweed sponge and coordinated with slow drying, metallic paint and other glazes, can create various vintage artistic effects. Original SKIN MARBLE has high scrubbing resistance, with less than 0.15mm of paint film, which can be applied on external walls.



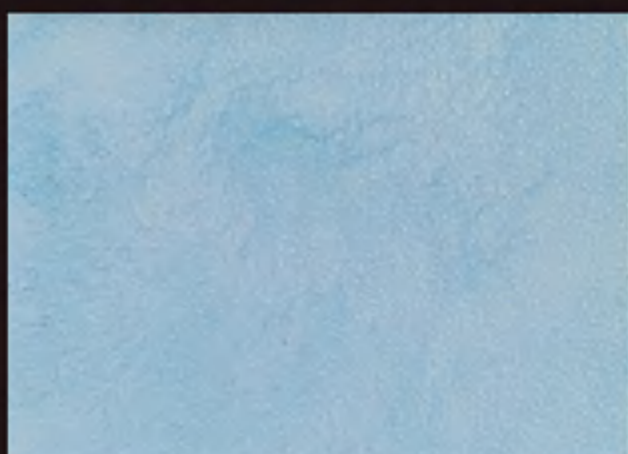
OST-SW-1037



OST-SW-1038



OST-SW-1039



OST-SW-1040



OST-SW-1041



OST-SW-1042



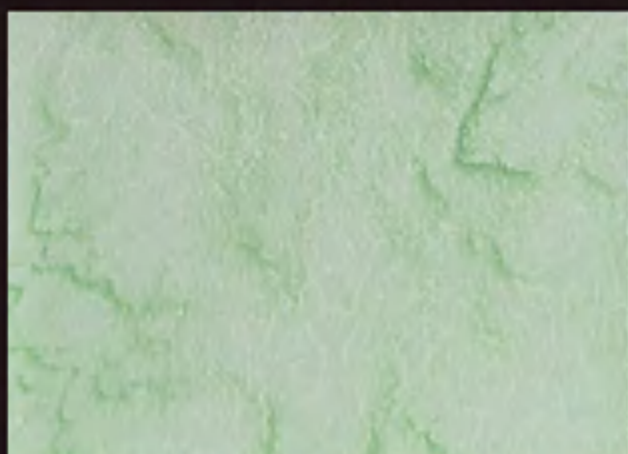
OST-SW-1043



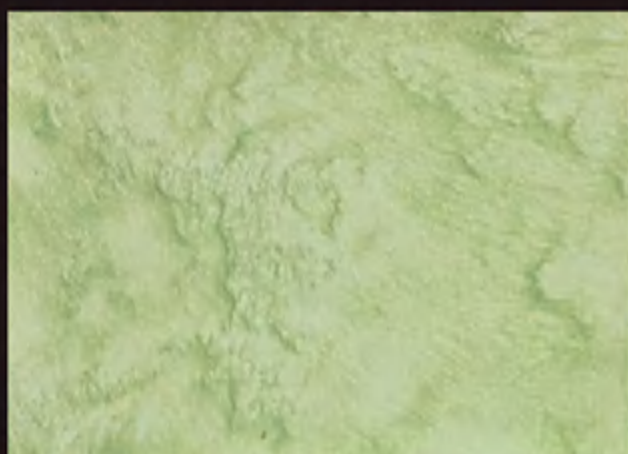
OST-SW-1044



OST-SW-1045



OST-SW-1046



OST-SW-1047



OST-SW-1048



OST-SW-1049



OST-SW-1050



OST-SW-1051

SKIN MARBLE

Color System:

According to the latest trend color in North America, SKIN MARBLE launched has 52 common standard colors, which are sorted and numbered from light to dark, row by row according to international standard color levels. Input the number and then get the standard color. The minimum paint adjustment amount is less than 50 grams. Also, based on consumers demand, high-accuracy auto dispensers can be used to apply color DIY as to make thousands of different duplicated colors. Color paste color dispensing system uses the world top brand water color paste originally imported from Germany, which have excellent color restoration and dyeing rate and has passed the test of German Blue Angel's highest environmental protection degree.

Space Application:

The SKIN MARBLE has been widely applied in various places, such as villas, clubs, hotels, apartments, shopping malls, schools and office buildings. Space applications include lobbies, aisles, public areas, classrooms, living rooms, bedrooms, study rooms, bathrooms, kitchens and other rooms. Details can also be used for wall surface, ceilings, lamp pools, niche, background walls and other internal space. In the Chinese rapidly developing personalized and fashionable interior decoration market, SKIN MARBLE will be take an important part in changing space colors and texture.

Environmental Protection Index:

SWAROVSKI PAINT has reached the strictest national environmental protection testing standards. In the testing, no hazardous chemicals were detected in all paint. Meanwhile, series products have passed world-known accreditation, French A+ Certification, LEED Test Report, German Blue Angel VOC Test Report.

Testing Items	Standard Requirement	Result	Single Conclusion
Volatile Organic Compounds (VOC)	≤120	Not detected	Conformity
Benzene and free benzene	≤100	Not detected	Conformity
Pb Cd Cr Hg	≤60	Not detected	Conformity

Small color chip in the series color cards will look lighter than the actual color painted on the wall due to human nature visual angle. All colors in the series Color Cards are subject to the color in the big template with copy size 300*300 or above to achieve the same color as the wall surface.

SKIN MARBLE

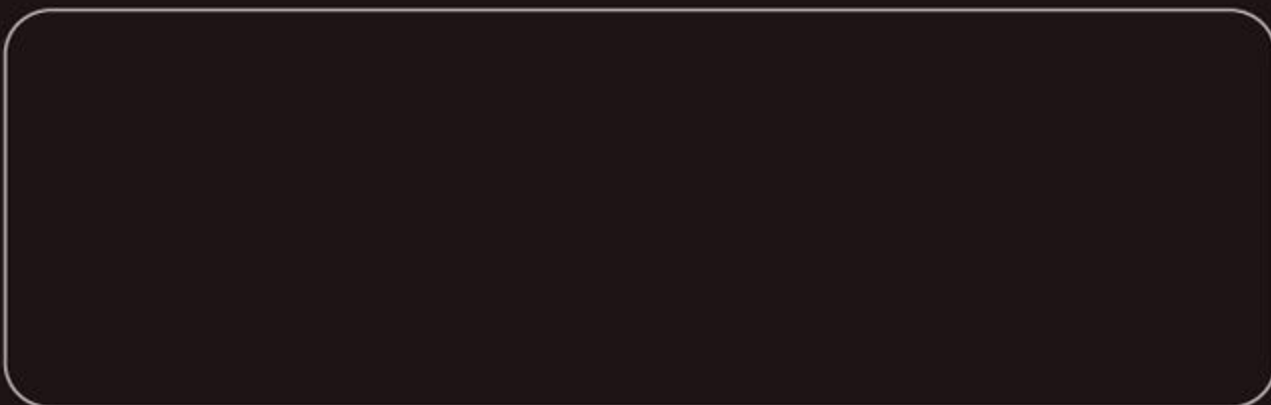
声明：

该系产品色卡 (Color Card)为：全自动电脑调色机 (Auto Dispenser) 调色，所有电脑数据均经过实际操作检测，拥有无与伦比的准确性和可复制性。我方对全部数据拥有知识产权，对未经我方许可，使用该数据库，进行商业活动的公司和个人，我们将追究相应的法律责任。

我方拥有以上全自动电脑调色机，色卡，空间配色系统，产品和工艺的最终解释权。关于该系列产品色卡和工艺的 DIY 应用，我方将在系统专业色彩的培训中，做更详细讲解。

Statement:

The color card of our full series products is tuned by the auto dispenser. All computer data have been tested by real operations and have excellent accuracy and duplication. The company owns the intellectual property for all data. Unauthorized data usage for business activity by company or individual is prohibited and shall bear all responsibilities. reserves the right of final explanation for the above auto dispensers, color cards, space matching system, products and technology. Further explanation about the DIY application series color cards and technology will be discussed in the company's professional color training.



法国环境A+认证
A+ Certification, FR



北美LEED检测
Building LEED Test Report



德国蓝天使VOC检测
BLUE ANGEL Test Report, GER



丹麦国家认证
DANAK accreditation