

Color Speciality Water Coatings
Function Non-slip Water coatings
Universal Specialty plaster

CMYK and RGB color test
electronic dictionary OURSTUCCO
Color APP Advanced systemUS.

OURSTUCCO has established a technical
benchmark international brand in the field of
high-performance water-based coating with
its long history and excellent product technical
heritage. The company's products
cover four major systems, including
Special Water Paint, Functional Non-
slip Coatings, Universal Specialty
plaster, Decorative coatings, and
more than 300 subdivided products. It leads
the direction of innovation and development of
high-performance water-based paint and has
promoted the large-scale application of wall-
ground integrated Universal Specialty
plaster, becoming the first choice for Chinese

designers and agents, and water-
based high-performance coatings. We believe
that corporate innovation is the core force that
drives the future. We look forward to exploring
more professional products with partners around the
world and shaping a more colorful world. Inspiration of de-
sign: High-performance water paint Car-
ing for the disadvantaged people:
Function Non-slip Water Paint Wall
and ground integrated color. Universal
Specialty plaster. Continue to
innovate: decoration art coatings

Cross-era color system: **OURSTUCCO**

Color APP In the field of water-
based coatings, the United States
OURSTUCCO and the world's top
Swiss Data COLOR color instrument and
equipment company have jointly developed
the world's leading OURSTUCCO Color App
System CMYK and RGB color test
electronic dictionary, which has accumulated
150,000 original color samples, covering
people. More than 90% of the water-based
coating color of the eye recognition range uses
advanced spectral analysis technology to accurately
capture the special characteristics of the target color
to ensure the high consistency of the color and
achieve high-precision color matching.

The COLOR system can also provide
intelligent color matching and adjustment
suggestions based on the needs of

Designers and application scenarios.

It realizes water-based coating color applica-
tions, one of the largest technical
breakthroughs in the world in nearly
40 years.

Color Speciality Water Coatings
特种水性改色涂料
Function Non-slip Water coatings
特殊功能防滑涂料
Universal Specialty plaster
墙地一体通用灰泥
OURSTUCCO Color APP system
权威RGB与CMYK色彩校验词典

MATTE SERIES



哑光专业改色涂料

OURSTUCCO

Color Speciality Water Coatings



聚脲改性特种涂料

双组分聚脲改性涂料（标准产品）

OURSTUCCO公司美国原装进口的改色涂料，主漆为双组分聚脲和聚氨酯复合涂料，A组分主漆是可以调色，分为浅色基L，中色基M及深色基D，三个色度基础漆。B组分为纳米缔合剂，A和B混合7天后达到最佳漆膜性能，使用性能超过多数国际水性工业漆标准。

改色漆调色代码：OST-XX-0000X，中间第一个字母X代表改色系列，第二个X代表光泽度（L代表亮光，Y代表哑光），后面4位数字代表调色编号，结尾字母X代表调色基漆种类（L代表浅基，M代表中基）。使用时，A基础漆调色后，添加B组分纳米缔合剂，混合均匀后，即可使用。A组分和B组分的标准混合比例为7:1。

A和B混合后，超过3小时，严禁使用。

调色色浆，请使用国际知名品牌水性环保色浆或OURSTUCCO美国原产色浆，可向公司索要专业色卡、调色数据表，人工手动DIY调色。公司向金牌代理商提供DATACOLOR取色系统和全自动电脑调色系统，正规培训后，既可进行色彩体验和服务。

本色卡调色代码：采用艺术涂料1011色阶编码体系，兼顾手动调色和使用全自动电脑调色的2大类代理商，提供常规浅基(L)和中基(M)调色。更深的色彩请使用深色基(D)调色，具体向美国OURSTUCCO公司咨询。

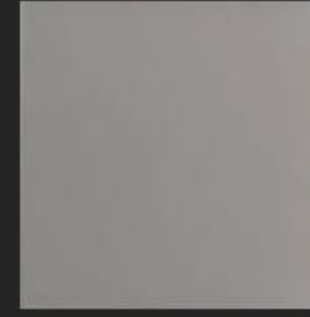
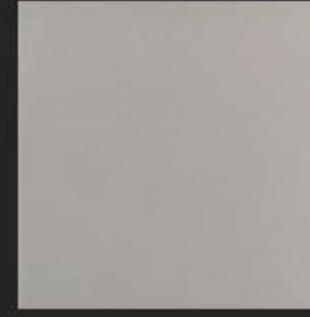
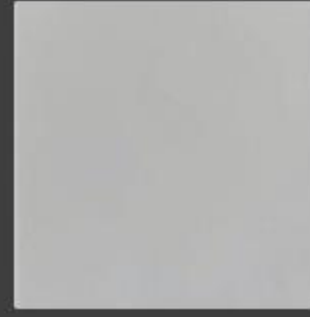
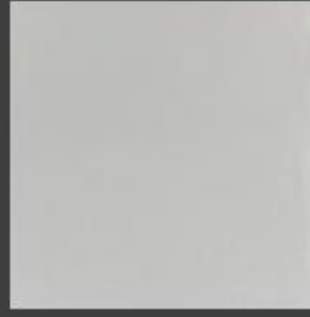
单组分聚氨酯（可定制）

OURSTUCCO公司按地区客户的要求，也可以提供单组分聚氨酯涂料，同样具有国际一流水准。综合使用性能可达到双组分聚氨酯的80%以上，广泛应用于医院翻新，厨房和卫生间翻新等。

浅色基 (L)

中色基 (M)

O'Neill
奥尼尔灰



OST-GY-1011L

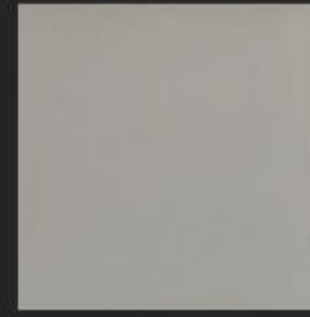
OST-GY-1012L

OST-GY-1013L

OST-GY-1014M

OST-GY-1015M

Trenton
特伦顿灰



OST-GY-1021L

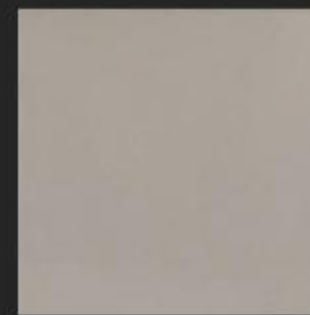
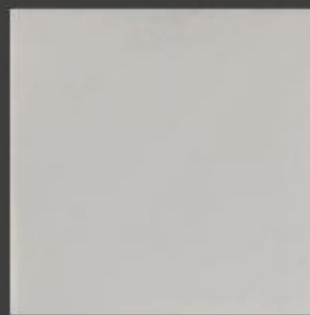
OST-GY-1022L

OST-GY-1023L

OST-GY-1024M

OST-GY-1025M

Troy
特洛伊灰



OST-GY-1031L

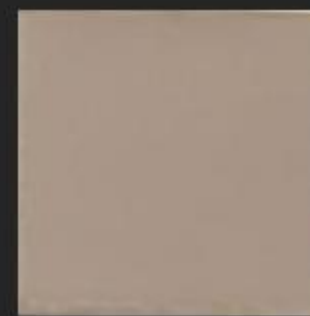
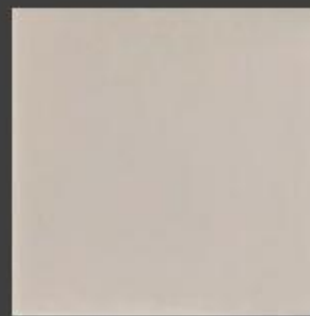
OST-GY-1032L

OST-GY-1033L

OST-GY-1034M

OST-GY-1035M

Albany
奥尔巴尼褐



OST-GY-1041L

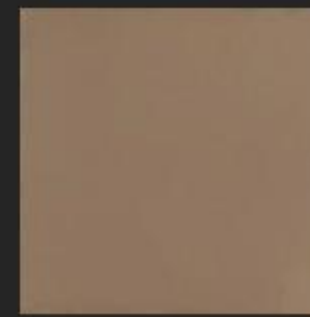
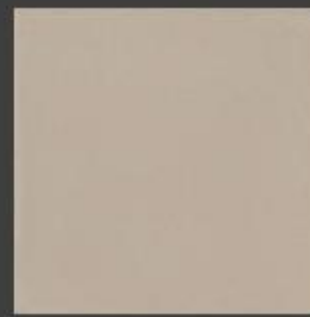
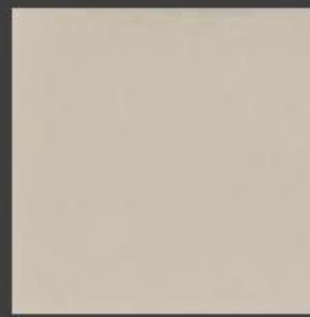
OST-GY-1042L

OST-GY-1043L

OST-GY-1044M

OST-GY-1045M

Ithaca
伊萨卡褐



OST-GY-1051L

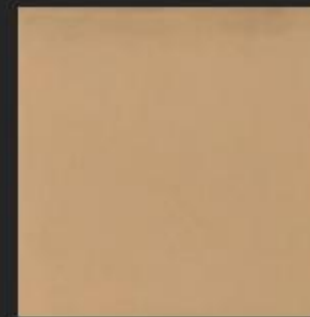
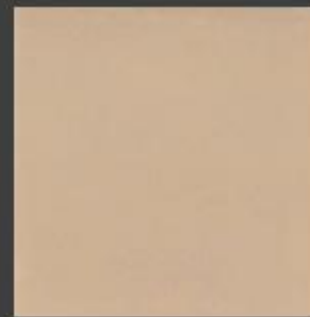
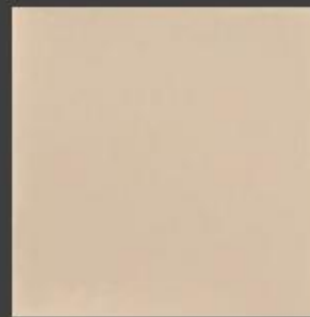
OST-GY-1052L

OST-GY-1053L

OST-GY-1054M

OST-GY-1055M

Bronx
布朗克斯咖



OST-GY-1061L

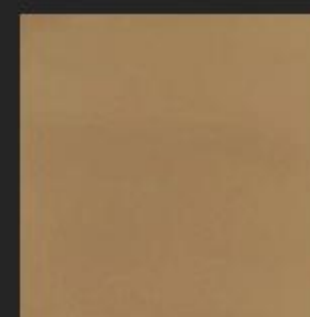
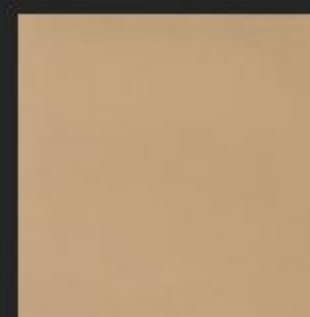
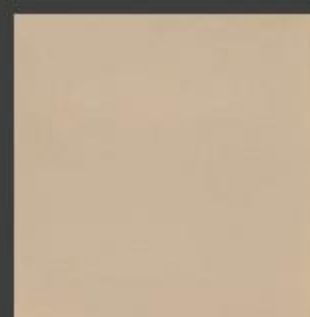
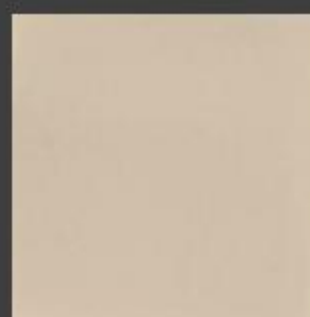
OST-GY-1062L

OST-GY-1063L

OST-GY-1064M

OST-GY-1065M

Antioch
安提棕



OST-GY-1071L

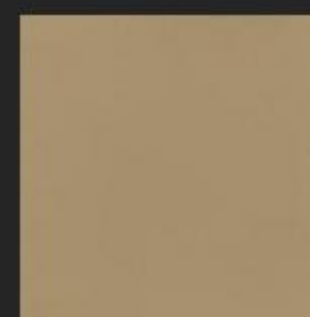
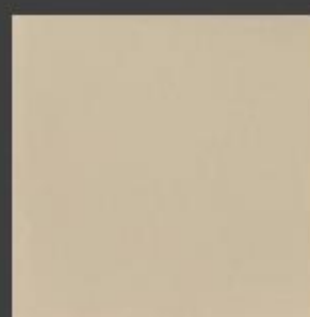
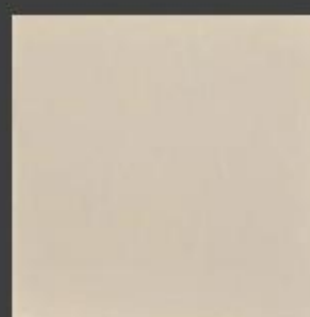
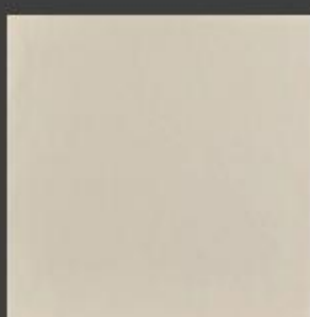
OST-GY-1072L

OST-GY-1073L

OST-GY-1074M

OST-GY-1075M

Enid
伊妮德咖



OST-GY-1081L

OST-GY-1082L

OST-GY-1083L

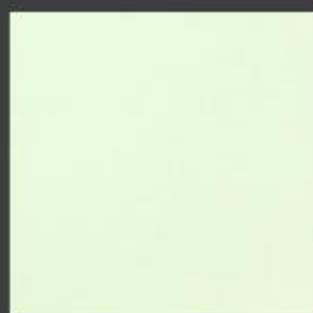
OST-GY-1084M

OST-GY-1085M

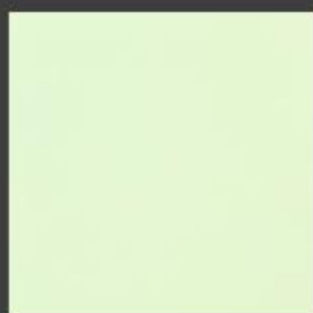
浅色基 (L)

中色基 (M)

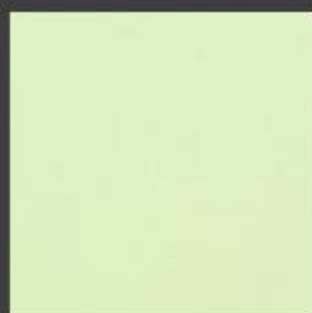
Miami
迈阿密绿



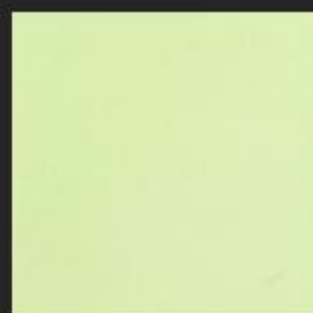
OST-GY-1091L



OST-GY-1092L



OST-GY-1093L

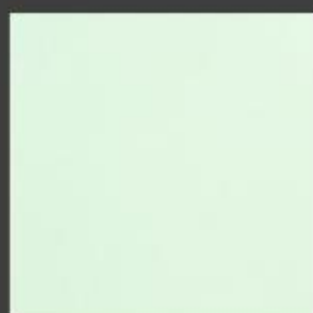


OST-GY-1094M

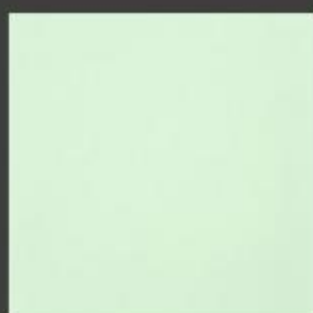


OST-GY-1095M

Guelph
圭尔夫绿



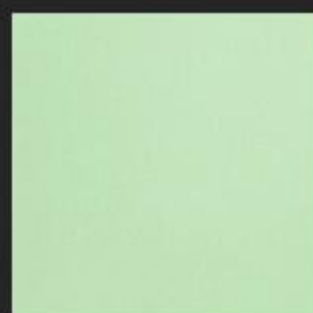
OST-GY-1101L



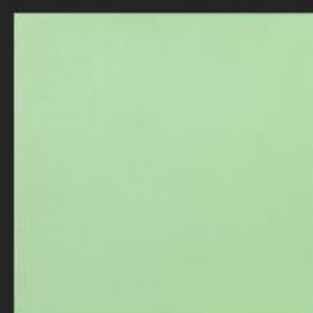
OST-GY-1102L



OST-GY-1103L

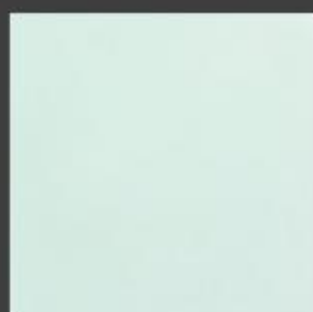


OST-GY-1104M

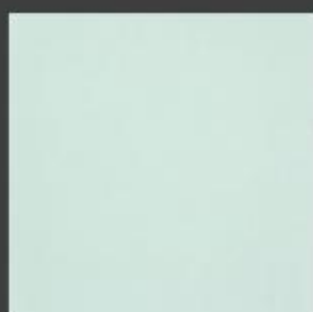


OST-GY-1105M

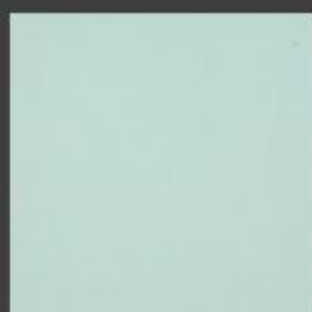
Portland
波特兰绿



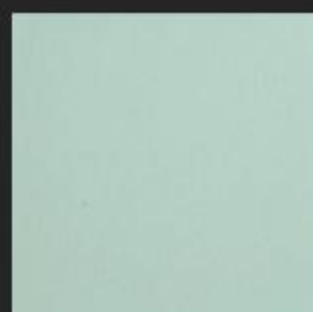
OST-GY-1111L



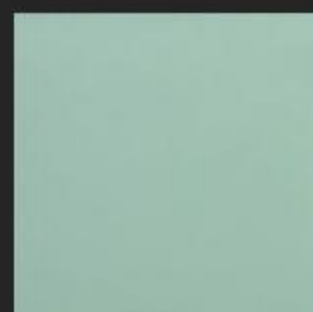
OST-GY-1112L



OST-GY-1113L

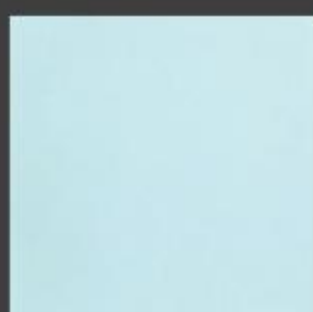


OST-GY-1114M

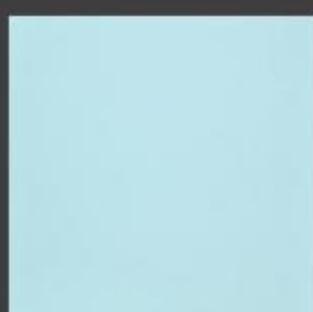


OST-GY-1115M

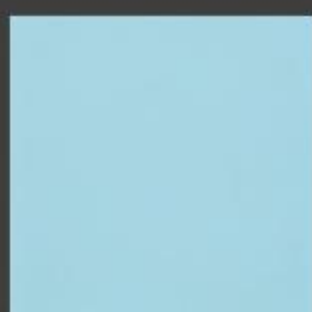
Allen
阿伦敦青



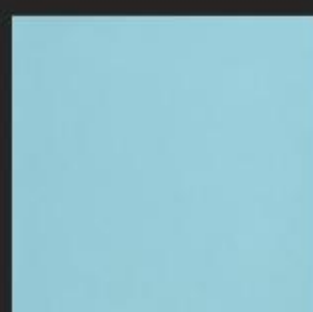
OST-GY-1121L



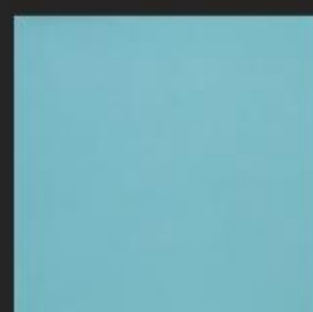
OST-GY-1122L



OST-GY-1123L

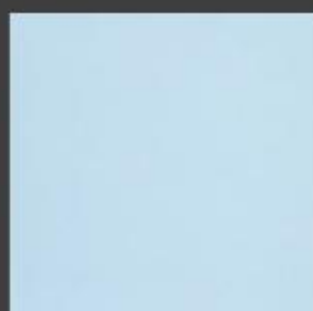


OST-GY-1124M

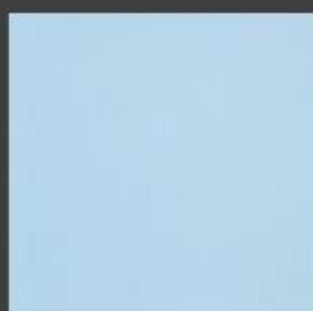


OST-GY-1125M

Abilene
阿比林靛



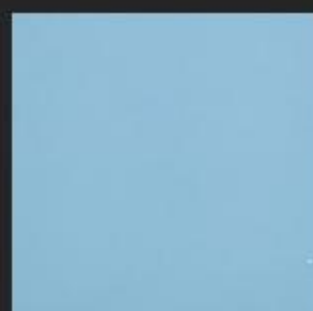
OST-GY-1131L



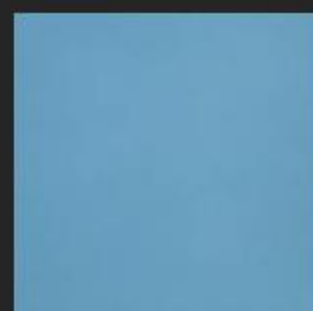
OST-GY-1132L



OST-GY-1133L



OST-GY-1134M



OST-GY-1135M

Memphis
孟菲斯蓝



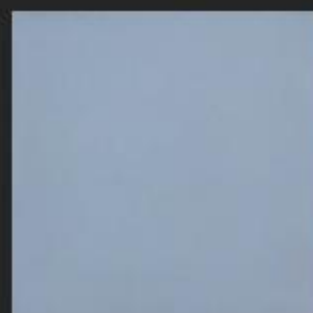
OST-GY-1141L



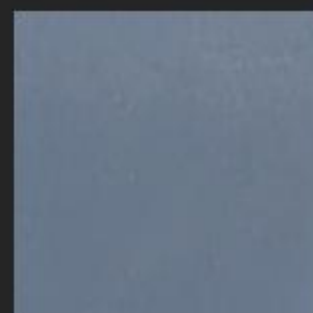
OST-GY-1142L



OST-GY-1143L

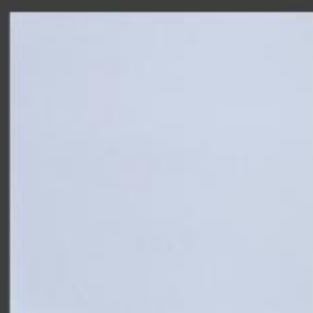


OST-GY-1144M

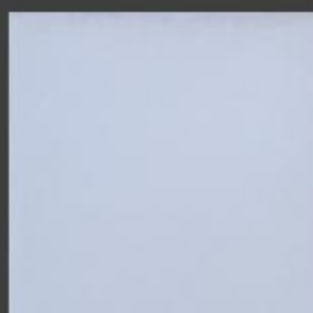


OST-GY-1145M

Beaumont
博蒙特蓝



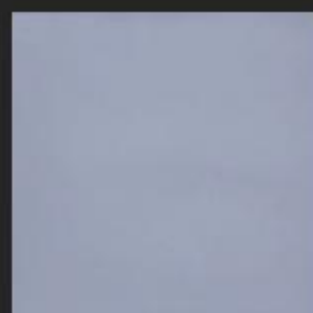
OST-GY-1151L



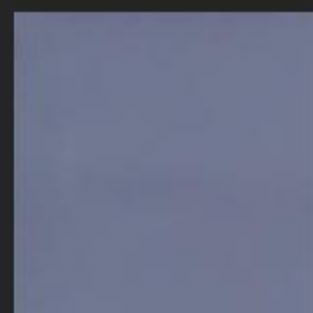
OST-GY-1152L



OST-GY-1153L

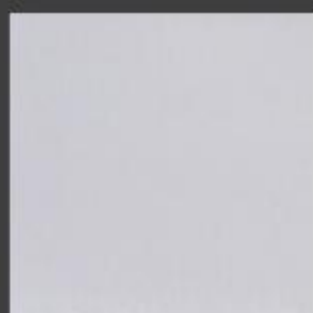


OST-GY-1154M

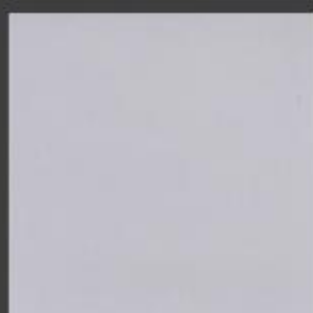


OST-GY-1155M

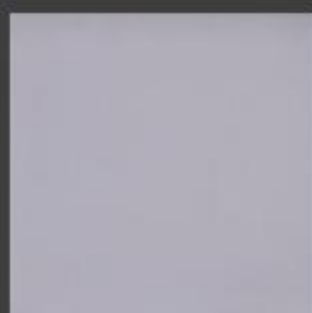
Victoria
维多利亚紫



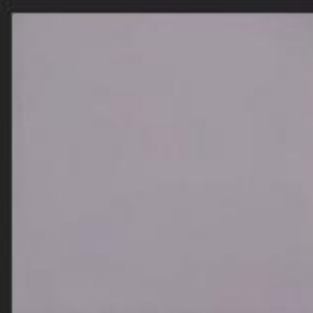
OST-GY-1161L



OST-GY-1162L



OST-GY-1163L



OST-GY-1164M

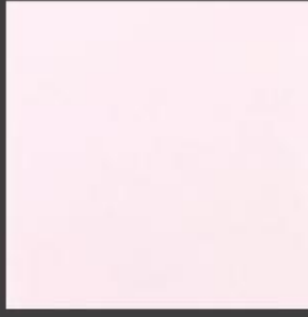


OST-GY-1165M

浅色基 (L)

中色基 (M)

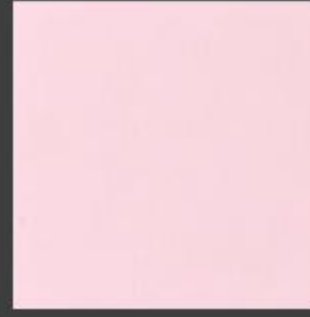
Austin
奥斯汀粉



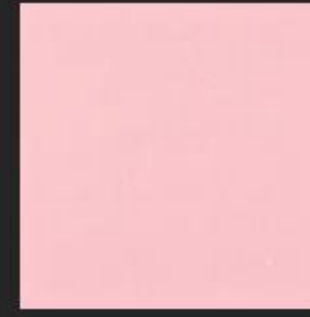
OST-GY-1171L



OST-GY-1172L



OST-GY-1173L



OST-GY-1174M



OST-GY-1175M

Bellaire
贝莱尔粉



OST-GY-1181L



OST-GY-1182L



OST-GY-1183L



OST-GY-1184M



OST-GY-1185M

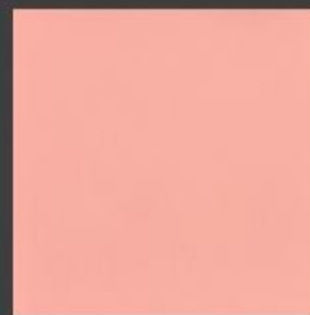
Florence
佛罗伦萨红



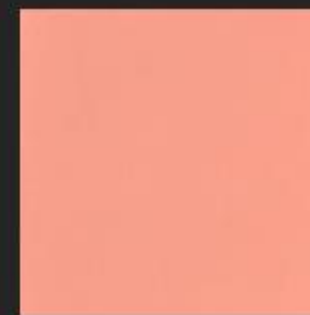
OST-GY-1191L



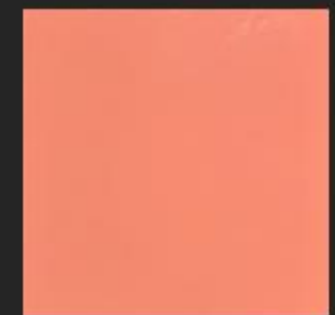
OST-GY-1192L



OST-GY-1193L



OST-GY-1194M



OST-GY-1195M

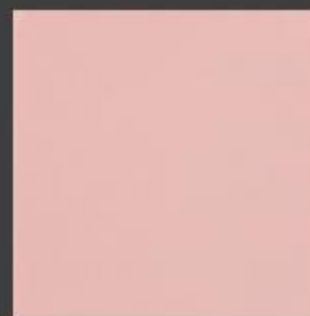
Sherman
谢尔曼绯红



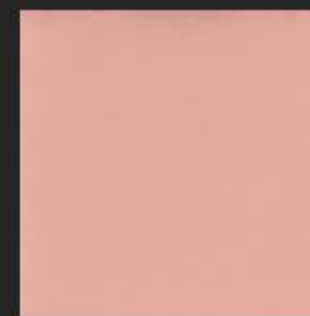
OST-GY-1201L



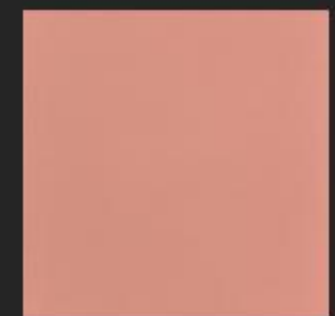
OST-GY-1202L



OST-GY-1203L

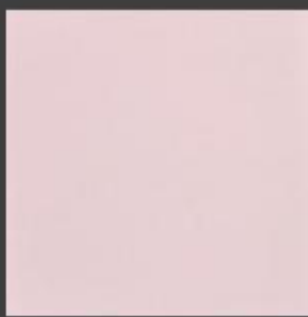


OST-GY-1204M



OST-GY-1205M

Seattle
西雅图紫



OST-GY-1211L



OST-GY-1212L



OST-GY-1213L



OST-GY-1214M



OST-GY-1215M

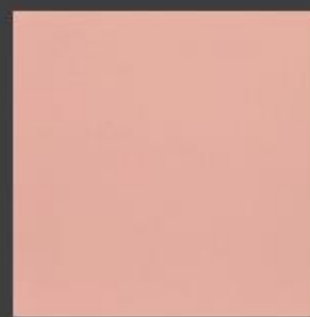
Tyler
泰勒红



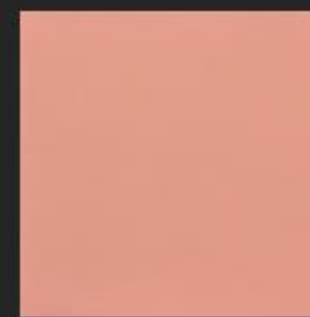
OST-GY-1221L



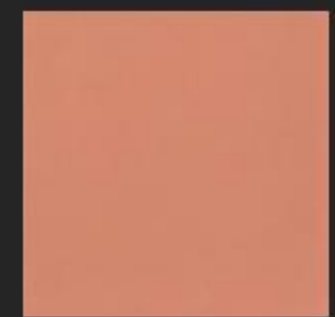
OST-GY-1222L



OST-GY-1223L



OST-GY-1224M

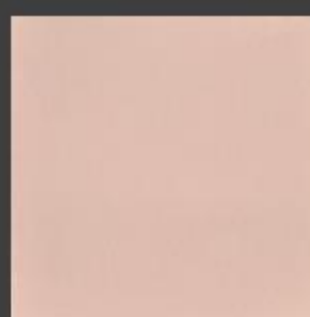


OST-GY-1225M

Dallas
达拉斯红



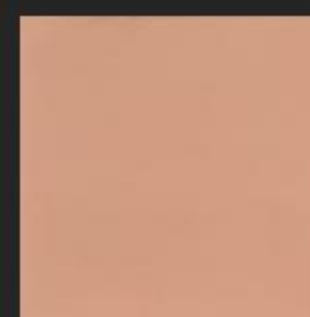
OST-GY-1231L



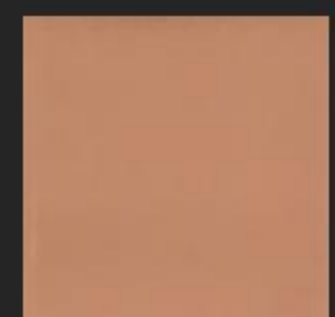
OST-GY-1232L



OST-GY-1233L

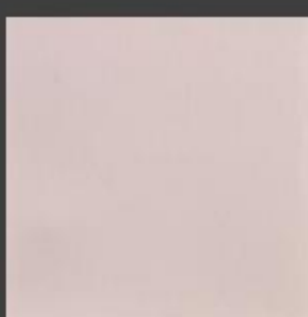


OST-GY-1234M

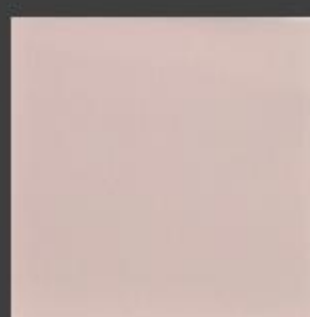


OST-GY-1235M

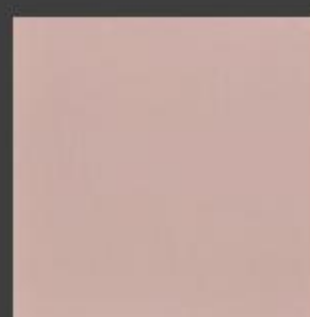
Plano
普莱诺紫



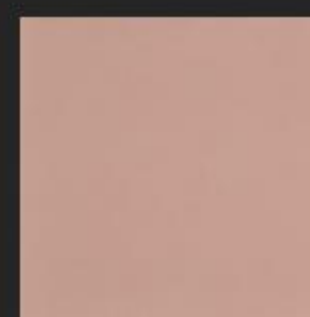
OST-GY-1241L



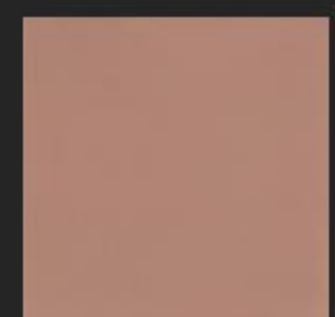
OST-GY-1242L



OST-GY-1243L



OST-GY-1244M



OST-GY-1245M

浅色基 (L)

中色基 (M)

Blanding
布兰丁绿



OST-GY-1251L



OST-GY-1252L



OST-GY-1253L



OST-GY-1254M



OST-GY-1255M

Provo
普罗沃绿



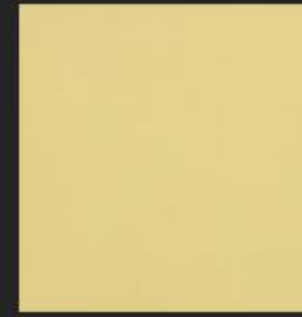
OST-GY-1261L



OST-GY-1262L



OST-GY-1263L



OST-GY-1264M



OST-GY-1265M

Ogden
奥格登黄



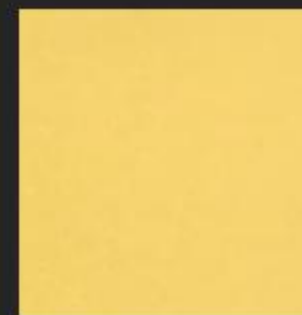
OST-GY-1271L



OST-GY-1272L



OST-GY-1273L



OST-GY-1274M



OST-GY-1275M

Roanoke
罗阿诺克黄



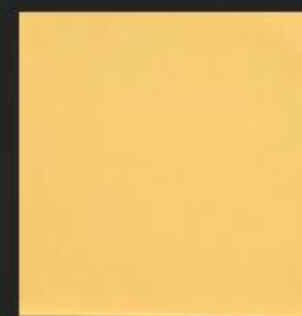
OST-GY-1281L



OST-GY-1282L



OST-GY-1283L



OST-GY-1284M



OST-GY-1285M

Danville
丹维尔黄



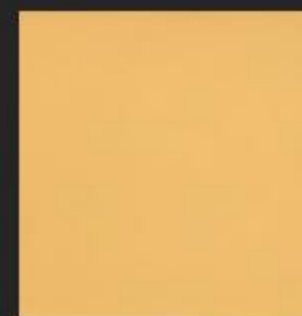
OST-GY-1291L



OST-GY-1292L



OST-GY-1293L



OST-GY-1294M

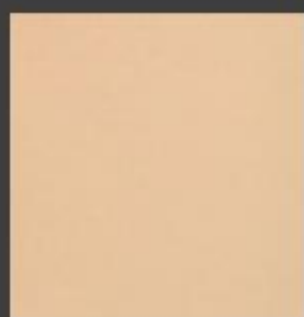


OST-GY-1295M

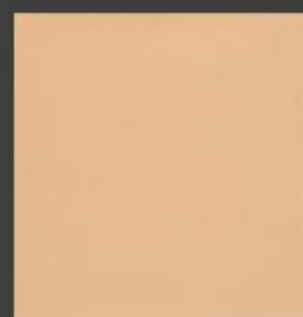
Houston
休斯敦橘



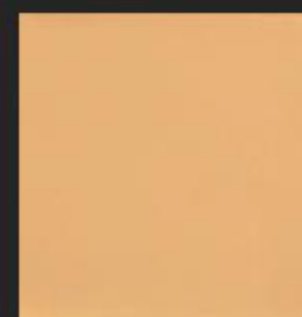
OST-GY-1301L



OST-GY-1302L



OST-GY-1303L

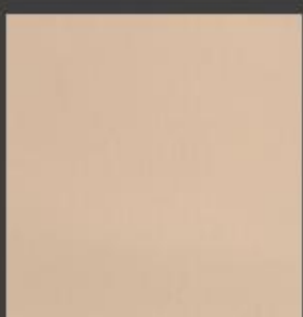


OST-GY-1304M

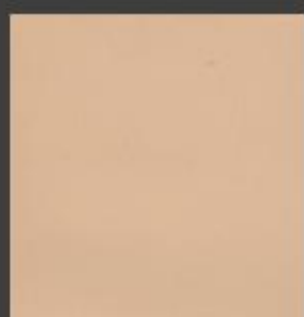


OST-GY-1305M

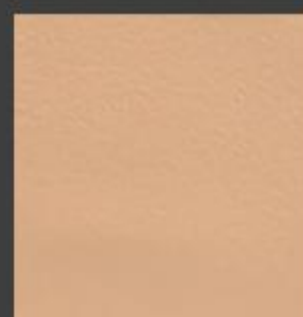
Kenosha
基诺沙橙



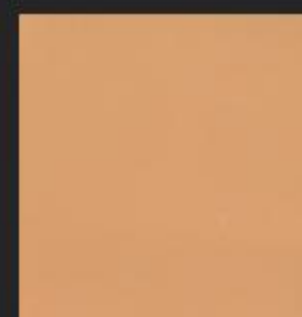
OST-GY-1311L



OST-GY-1312L



OST-GY-1313L

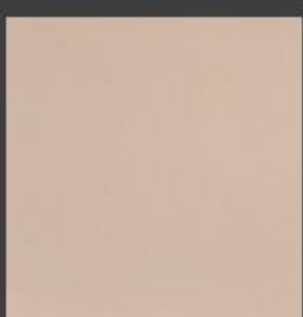


OST-GY-1314M

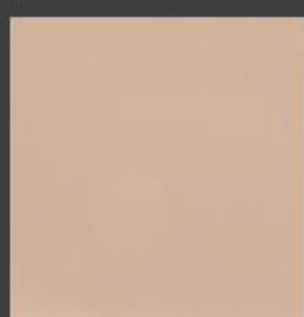


OST-GY-1315M

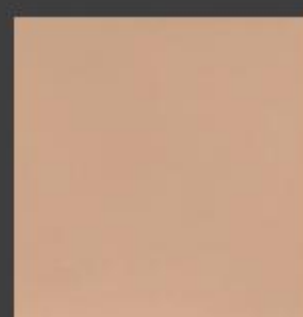
Bellevue
贝尔维尤橙



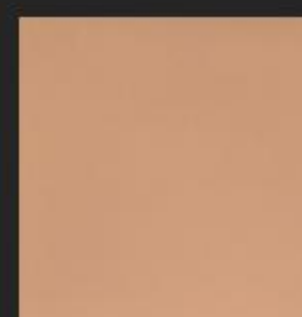
OST-GY-1321L



OST-GY-1322L



OST-GY-1323L



OST-GY-1324M



OST-GY-1325M

Speciality coating

standard construction process:

1. Clean up grass -roots materials: Clean the surface of (including glass, ceramics, metals, wood, stone, GRC Resin, cement floor, epoxy floor, etc.) and dry them.
2. Mixed AB component: Mix the specific coatings A component and the B component at 6: 1, and mix it evenly. (After mixing A and B, it is recommended to use it within 3 hours).
3. Apply brush for the first time (dry 6 hours or more).
4. Pick up the second time (you can use it slightly after 24 hours, and reach the best performance after 7 days).

Remark:

Functional anti-slip paint: consistent with the above construction steps.

Universal mud is a single -group division: After cleaning the grassroots, scrape it 2 times. After 12 hours of drying for the second time, the OURSTUCCO-360 dual group is used twice, the method is the same as above).

Supplementary description:

Aluminum gusset color change coating: need to apply aluminum substrate professional primer

Cement floor and self -flowing: need to paint the professional primer of cement.

特种涂料标准施工工艺:

- 1.清理基层材料: 将包括玻璃、陶瓷、金属、木材、石材、塑料、GRC树脂、水泥地坪、环氧地坪等表面清理干净, 并晾至干燥。
- 2.混合AB组分: 将特种涂料 A组分调配适当的颜色, 与B组分按6:1的比例, 混合均匀 (A和B混合后, 建议在3小时内用完, 否则将影响最终漆膜性能)。
- 3.涂刷第一遍 (干燥6小时以上)。
- 4.涂刷第二遍 (48小时后可以轻微使用, 7天后达到最佳使用性能)。

备注:

功能性防滑涂料: 与上面施工步骤一致, 将防滑涂料A和B组分混合后, 3小时内用完, 两遍完工。

万用灰泥为单组分: 清理基层后, 批刮2遍。第二遍干燥12小时后, 再施工 (OURSTUCCO-360双组份罩光两遍, 方法同上)。

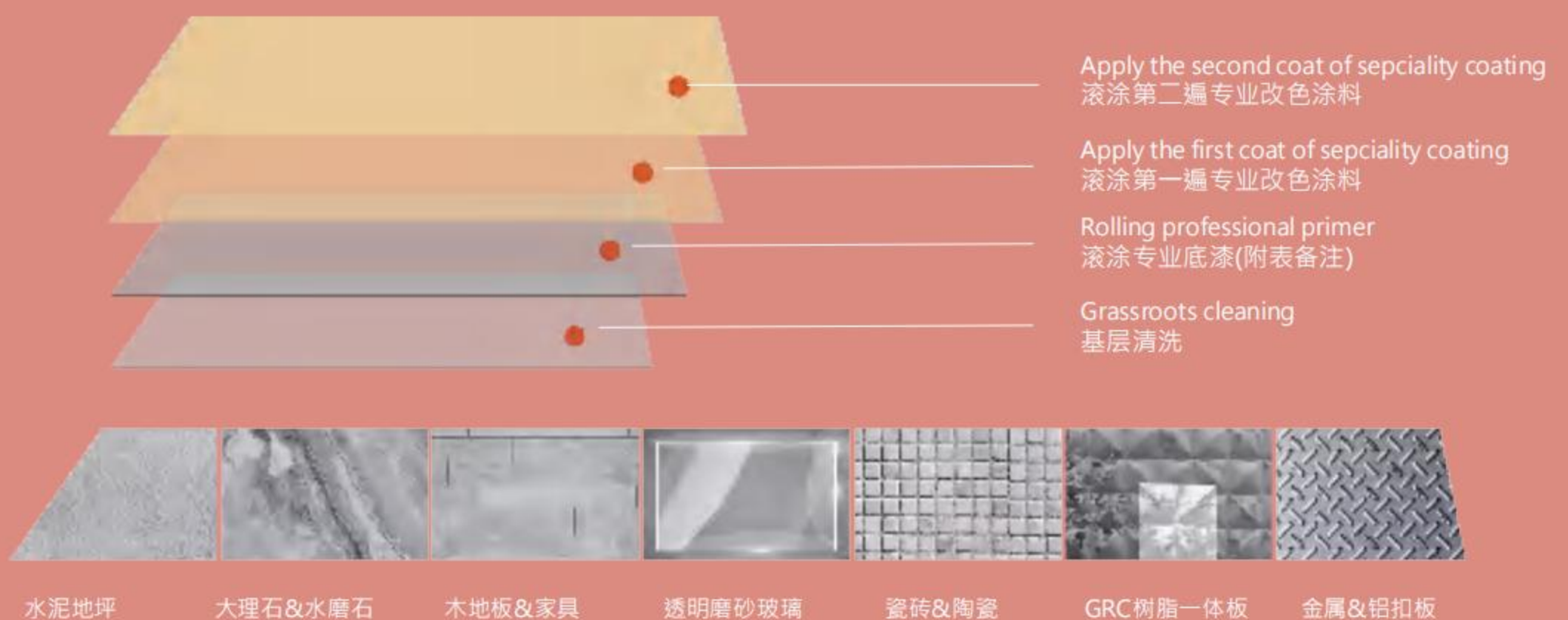
补充说明:

铝扣板改色涂料: 需要涂刷铝基材专业底漆

水泥地坪和自流平: 需要涂刷水泥专业底漆

大部分塑料材质: 需要砂纸打磨毛糙, 并向厂家索要针对性施工流程和专业底漆

材料标准工艺图示和列表:



材料附表:

1.1 High-performance pottery coatings	高性能陶瓷漆	1.8 Stone or Terrazzo coatings	石材(水磨石)改色涂料
1.2 Ceramic coatings	瓷砖改色涂料	1.9 Cement floor coatings	水泥地坪·环氧地坪改色涂料
1.3 Glass coatings	玻璃改色涂料	1.10 Aluminum plate coatings	铝扣板改色涂料
1.4 Wood coatings	木材(家具,木地板)改色涂料	特种涂料简表 Specialty coating contents	
1.5 GRC Risen coatings	GRC树脂(装饰一体版)改色涂料		
1.6 Metal coatings	金属改色涂料		
1.7 Ebonite coatings	塑胶(地板革)改色涂料		

备注: 1.9水泥地坪和1.10铝扣板改色涂料,需要涂刷对应(水泥或铝扣板)专业底漆,请向美国OURSTUCCO公司·索要相关资料和产品技术交底。

特殊材质,权威改色
设计色彩,全案解决

THE WORLD IS COLORFUL WHY NOT YOUR WALLS

色彩改变世界 · 品质源于专业

设计师圈层高端品牌

Ourstucco

The Commonwealth of Massachusetts United States
of America Business Certificate Registration Town of Hopkinton
CONDUCTED AT: Boston Massachusetts, USA

General Agent:

Beijing OURSTUCCO Co.Ltd Songzhuang Tongzhou District
中国总代理：北京欧施泥涂料有限公司



法国A+认证



北美LEED认证



蓝天使VOC检测



丹麦国家检测



微生物检测



NCS色彩体系



劳尔色彩体系



所见即所得色彩体系



高新技术企业



中国人保
太平洋保险承保