

THE WORLD IS COLORFUL WHY NOT YOUR WALLS

色彩改变世界 品质源于专业

设计师圈层高端品牌

BEIJING OURSTUCCO COMPANY.CO.LTD
北京欧施泥涂料有限公司



法国A+认证

北美LEED认证

蓝天使VOC检测

丹美国家检测

微生物检测

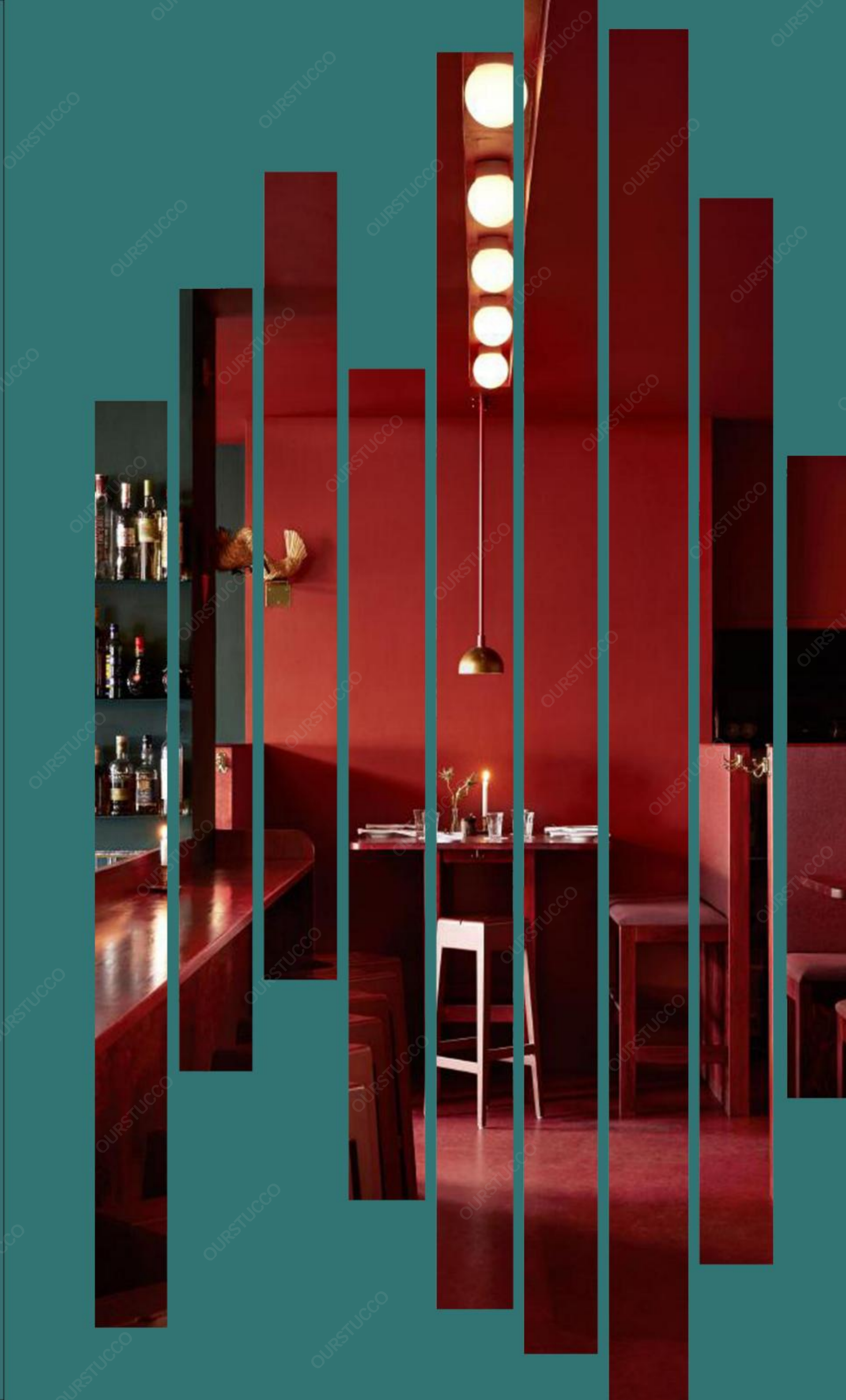
NCS色彩体系

劳尔色彩体系

所见即所得色彩体系

高新技术企业

中国人保
太平洋保险承保



DIAMOND
OURSTUCCO

Diamond micro-cement/Universal plaster
地面彩色微水泥/通用灰泥

金刚石微水泥



Diamond plaster 金刚石微水泥

地面彩色微水泥/通用灰泥
Diamond micro-cement/Universal plaster

U.S. OURSTUCCO company leading the market of universal plaster, It is a composite plaster made of high-performance one-component polyurethane, silica quartz, and inorganic fillers.

It has high compressive strength, super robustness, outstanding flexibility and excellent adhesion.

It is super water resistant, excellent stain resistance and good fire resistance. It can also be used in wet areas such as kitchens and bathrooms.

Excellent color paste adaptability, which can restore the designer's effect to the greatest extent, and the color matching is diversified.

One-component plaster, simplifying the process and material of two-component microcement, make construction easier and more controllable.

美国OURSTUCCO公司领先市场的金刚石微水泥

是由高性能单组分聚氨酯, 二氧化硅石英, 和无机填料等制作的超高硬度通用灰泥

具有高抗压强度、超强坚固性、杰出的柔韧性和极好的附着力
其超级耐水性、绝佳的抗污性及良好的防火性

主要应用于地面, 也可以用于墙面

优秀的色浆适配性, 可调色更多鲜艳色彩, 长期使用不褪色
单组分灰泥, 简化了双组分微水泥的工序和材料

让施工更简单和可控



5 major advantages 领先传统微水泥的5大优势 of leading traditional micro-cement

1.Simple colormixing

General mud is a single-group division of mud, which is close to the color adjustment performance of ordinary water-based coatings. The material changes after the moisture and drying of the material can be pursued. Therefore It can ensure the stability of the product color. At the same time, because the general mud products can be used for the wall and the ground at the same time, the one-time color adjustment and unified construction can basically ensure that the color of the wall and the ground can be consistent.

调色简单

通用灰泥属于单组分灰泥，和普通水性涂料的调色性能接近，材料润湿状态和干燥后的颜色变化，是有一定规律可以追寻的，所以无论是样品制作，还是成品调色都能保证产品色彩的稳定性，同时，由于通用灰泥产品，可以同时用于墙面和地面，所以一次性调色，统一施工，基本上可以保证墙面和地面的色彩一致。

2.Simple construction

General mud is a single group of mud. There is no traditional dual-component micrometer for 4 to 5 hours. The limitation of cement hydration is limited. After dual components are mixed, it will not be constructed in time, which will cause microcytopenic flour and shells And other issues. Universal mud can be opened at any time in a single group. During the construction process, it will not bloom, and it will not be due to the dryness and wetness of the environment.

施工简单

传统双组分微水泥施工后需要4-5小时水泥水化时间，双组分混合后，若不及时施工会造成微水泥大面积粉化和起壳等问题。通用灰泥是单组分灰泥，不受水泥水化时间限制，单组分通用灰泥可以随时开桶施工，施工过程中也不会发花，更不会因环境干湿度变化产生色差问题进而影响最终效果。

3.Simple maintenance

Traditional dual-components are divided into micromegons, which contain a large amount of white cement. Due to the construction temperature, humidity, and outdoor weather, it is very large, and it is difficult to maintain consistency each time. Tradition is almost impossible to repair, and can only reorder the effect and reconstruction. GM is close to traditional water-based coatings, which can accurately maintain the original color and texture, and cooperate with the skilled techniques of construction staff to make maintenance possible.

维修简单

传统双组分微水泥，由于含有大量的白水泥，受施工温度，湿度，天气的影响非常大，每次施工均很难保持一致性。传统几乎无法维修，只能重新订效果，重新施工。通用灰泥和传统水性涂料接近，可以准确保持原先的色彩和质感，配合施工人员的熟练技法，让维修成为可能。

4.Shorter construction period

The universal mud is divided into universal mud, which is associated with the cross-intellectual and quartz cross-linking time, which directly generates hardness, eliminating the dual-component micrometer's cement hardening time. The best maintenance time is 21 days.) It greatly shortened the construction period, improved the quality of the project, and reduced process errors.

工期更短

单组分通用灰泥，由聚氨酯和石英交联结合，直接产生硬度，省去了双组分微水泥的水泥硬化时间。（双组分微水泥的硬化养护时间平均为7天，最佳养护时间为21天。）大大缩短了工期，提高了工程质量，减少了工艺错误。

5.Low cost price

Differential in a single group, due to its excellent product performance, the process and materials of dual-component micrometer are simplified, making the construction simpler and controllable. At the same time, the construction time is greatly reduced, the overall cost cost is greatly reduced, and at the same time, it also reduces the probability of engineering quality problems. It also completely solves the problem of color difference and construction period. In summary, the decline in cost is inevitable under the premise of ensuring quality.

成本造价低

单组分灰泥由于本身出色产品性能，简化了双组分微水泥的工序和材料，让施工更简单和可控，大大降低施工时间，让整体造价成本有比较大的降低，同时也减少了工程质量问题概率，也彻底解决了色差问题和工期问题。综上所述，保证质量的前提下，成本下降是必然。



Universal Speciality plaster

The universal mud in the leading market in the United States OURSTUCCO is a composite mud made by high-performance single-group polyurethane, silica grain, and inorganic fillers. It has the following characteristics:

- **High compressive strength:**
The cooperation of polyurethane and silica grain, under normal process construction and maintenance, the compressive strength of the products of the general mud can exceed 3kg/mm², which is higher than the strength of most high label cement flooring.
- **Super strong solidity:**
In nature, the material second only to diamond hardness is silica, quartz and inorganic fillers are composite, which provides universal mud unparalleled solids.
- **Outstanding flexibility:**
Different from traditional cement base products, general mud has good flexibility and anti-bending properties, and has a better cracking function than traditional cement. At the same time, because it does not contain cement, it also has better construction performance.
- **Excellent adhesion:**
It can be adhered to most common materials, such as tiles, marble, metal, wood, cement and other materials.
- **Super water resistance:**
Dual waterproof design, a single group of polyurethane in the bottom layer, and dual-component polyurethane of the surface layer, which can achieve the effect of long-term blisters that cannot afford the shell and water.
- **Excellent anti-pollution:**
360 dual-group polyurethane gloss, providing dense coating protection, with OURSTUCCO's nano-plated products, can achieve strong dirt resistance, normally use nano-plated crystals, which can prevent oil properties from oily properties. The marked pen repeatedly painted for more than half a year.
- **Good fire resistance:**
Most of the raw materials of general mud are inorganic fillers with a melting point of more than 1000 degrees, so it has no combustion, no smoke, and does not produce harmful burning properties. Excellent color slurry adaptability: pure water-based coating, adapted to all kinds of water-based slurry, has stronger color slurry, compatibility and weather resistance, and is widely used in the external wall. Protect the colorful colors and last for a long time.
- **Excellent color slurry adaptability:**
Pure water-based coating, adapted to all kinds of water-based slurry, has stronger color slurry, compatibility and weather resistance, and is widely used in the external wall. Protect the colorful colors and last for a long time.
- **Better environmental protection:**
It also has a better moisture-proof and mold-proof and anti-bacterioplasm performance.

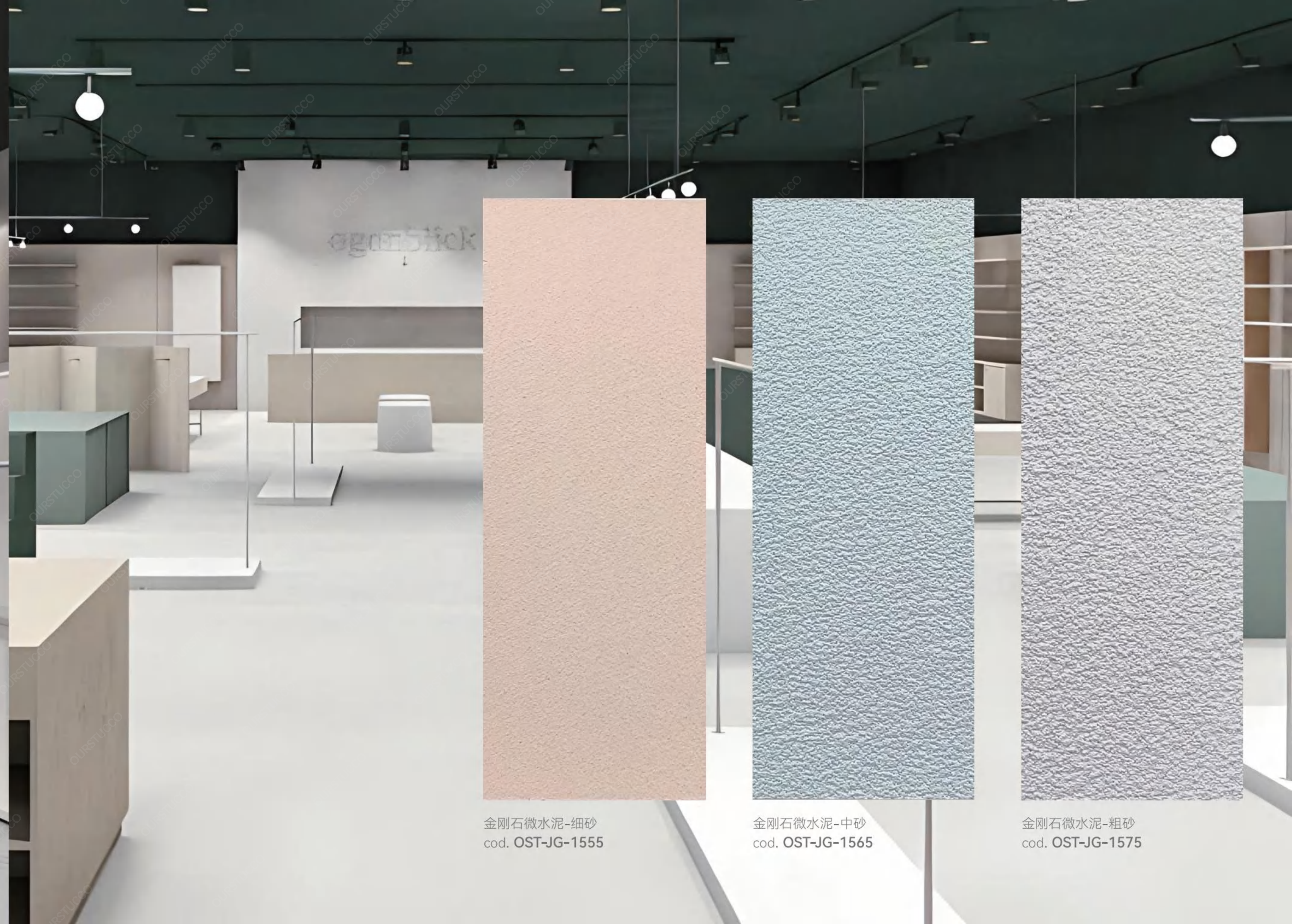
金刚石微水泥-通用灰泥

美国OURSTUCCO公司领先市场的通用灰泥，是由高性能单组分聚氨酯二氧化硅石英和无机填料等制作的复合型灰泥，具有如下产品特点：

- **高抗压强度：**
聚氨酯和二氧化硅石英的配合，正常工序施工和维护情况下，通用灰泥的成品抗压强度，可超过3KG/mm²，已经高于了大多数高标号水泥地坪的强度。
- **超强坚固性：**
自然界中，仅次于金刚石硬度的材料就是二氧化硅石英，石英和无机填料复合，提供了通用灰泥无与伦比的坚固性。
- **杰出的柔韧性：**
区别于传统水泥基产品，通用灰泥具有较好的柔韧性和抗折弯性，比传统水泥具有更好的抗裂功能，同时由于不含有水泥，也具有更好的施工性能。
- **极好的附着性：**
可粘结于大多数建筑常见材料，如瓷砖、大理石、金属、木材、水泥等材料。
- **超级耐水性：**
双重防水设计，底层单组分聚氨酯，面层双组分聚氨酯，可以达到长期水泡不起壳不渗水的效果。
- **绝佳的抗污性：**
360双组分聚氨酯罩光，提供了致密的涂层保护，配合OURSTUCCO公司的纳米镀晶产品，可以达到极强的耐污，正常使用纳米镀晶，可以支持油性记号笔反复涂写半年以上。
- **良好的防火性：**
通用灰泥的大部分原材料为熔点超过1000度的无机填料，所以本身具有不燃烧、不冒烟、不产生有害燃烧物的性能。
- **优秀色浆适配性：**
纯水性涂料适配各类水性色浆，具有更强色浆保色性、兼容性和耐候性，广泛应用于外墙，保护色彩鲜艳，经久不褪色。
- **更好的环保性：**
通用灰泥还具有更好的防潮防霉防菌的性能，纯水性配方，施工无任何难闻气味，完工后没有任何VOC挥发。



OURSTUCCO · DIAMOND MICRO-CEMENT · UNIVERSAL PLASTER FOR FLOOR



金刚石微水泥-细砂
cod. OST-JG-1555

金刚石微水泥-中砂
cod. OST-JG-1565

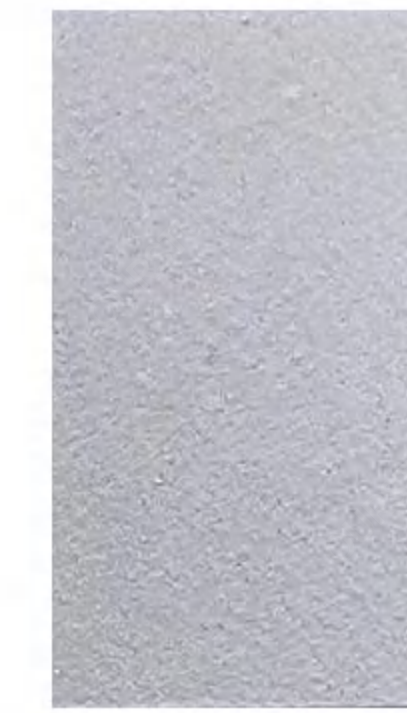
金刚石微水泥-粗砂
cod. OST-JG-1575



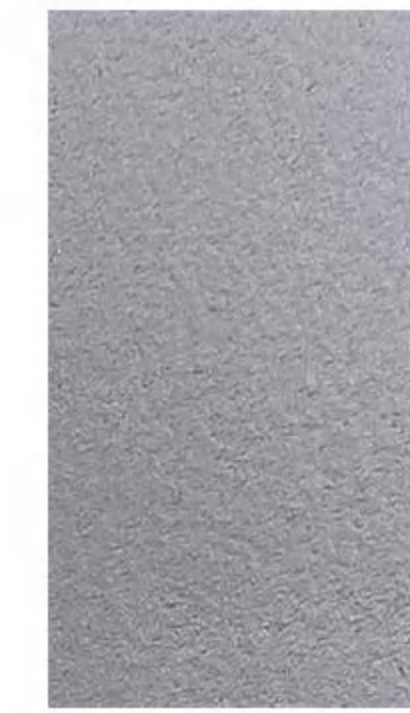
Color. | 圣西罗灰
SanSiro



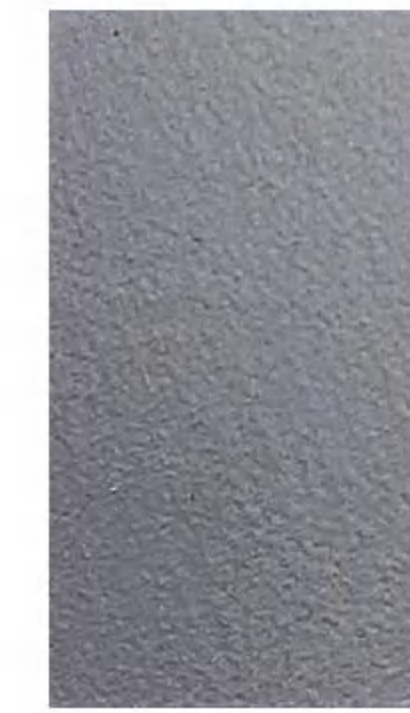
cod. **OST-JG-1011**
·SPL:1105(1g)+Base(38g)
·5KG(Supported by dispenser)



cod. **OST-JG-1012**
·SPL:1105(1g)+Base(14.6g)
·5KG(Supported by dispenser)



cod. **OST-JG-1013**
·SPL: Mix 200g
·5KG(Supported by dispenser)



cod. **OST-JG-1014**
·SPL: Mix 200g
·5KG(Supported by dispenser)



cod. **OST-JG-1015**
·SPL: Mix 200g
·5KG(Supported by dispenser)

Color. | 瓦拉洛灰
Varallo



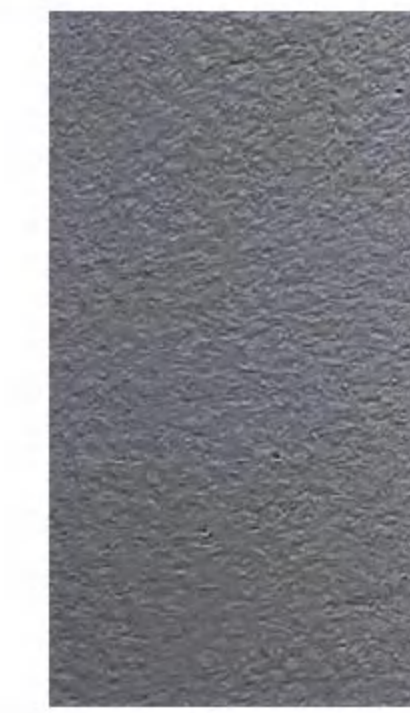
cod. **OST-JG-1021**
·SPL:1025(1g)+Base(38g)
·5KG(Supported by dispenser)



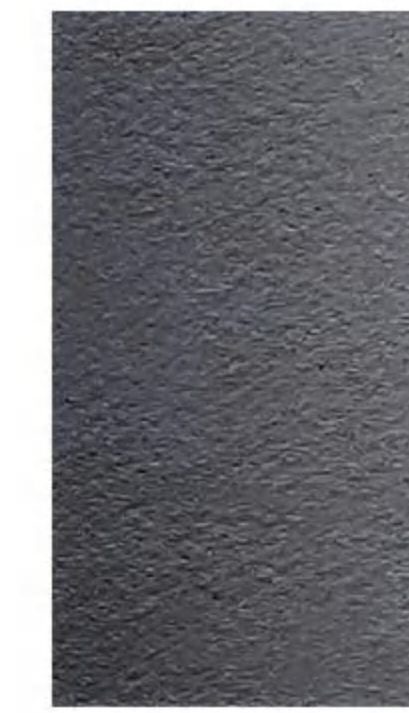
cod. **OST-JG-1022**
·SPL: Mix 200g
·5KG(Supported by dispenser)



cod. **OST-JG-1023**
·SPL: Mix 200g
·5KG(Supported by dispenser)



cod. **OST-JG-1024**
·SPL: Mix 200g
·5KG(Supported by dispenser)



cod. **OST-JG-1025**
·SPL: Mix 200g
·5KG(Supported by dispenser)

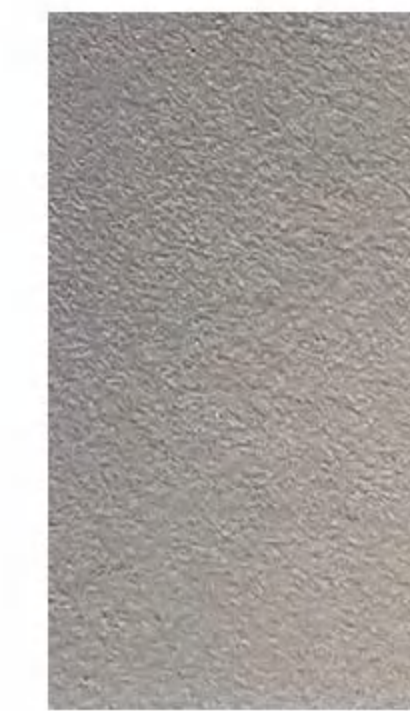
Color. | 巴勒莫灰
Palermo



cod. **OST-JG-1031**
·SPL:1035(1g)+Base(38g)
·5KG(Supported by dispenser)



cod. **OST-JG-1032**
·SPL: Mix 200g
·5KG(Supported by dispenser)



cod. **OST-JG-1033**
·SPL: Mix 200g
·5KG(Supported by dispenser)



cod. **OST-JG-1034**
·SPL: Mix 200g
·5KG(Supported by dispenser)



cod. **OST-JG-1035**
·SPL: Mix 200g
·5KG(Supported by dispenser)

OURSTUCCO · 欧施泥®



Color. |
Verdi | 马西莫绿



cod. **OST-JG-1041**
·SPL:1045(1g)+Base(38g)
·5KG(Supported by dispenser)



cod. **OST-JG-1042**
·SPL:1045(1g)+Base(14.6g)
·5KG(Supported by dispenser)



cod. **OST-JG-1043**
·SPL: Mix 200g
·5KG(Supported by dispenser)



cod. **OST-JG-1044**
·SPL: Mix 200g
·5KG(Supported by dispenser)



cod. **OST-JG-1045**
·SPL: Mix 200g
·5KG(Supported by dispenser)

Color. |
Maggiore | 马乔列黄



cod. **OST-JG-1051**
·SPL:1055(1g)+Base(38g)
·5KG(Supported by dispenser)



cod. **OST-JG-1052**
·SPL: Mix 200g
·5KG(Supported by dispenser)



cod. **OST-JG-1053**
·SPL: Mix 200g
·5KG(Supported by dispenser)



cod. **OST-JG-1054**
·SPL: Mix 200g
·5KG(Supported by dispenser)



cod. **OST-JG-1055**
·SPL: Mix 200g
·5KG(Supported by dispenser)

Color. |
Ducati | 杜卡迪黄



cod. **OST-JG-1061**
·SPL:1065(1g)+Base(38g)
·5KG(Supported by dispenser)



cod. **OST-JG-1062**
·SPL: Mix 200g
·5KG(Supported by dispenser)



cod. **OST-JG-1063**
·SPL: Mix 200g
·5KG(Supported by dispenser)



cod. **OST-JG-1064**
·SPL: Mix 200g
·5KG(Supported by dispenser)



cod. **OST-JG-1065**
·SPL: Mix 200g
·5KG(Supported by dispenser)

OURSTUCCO · 欧施泥®



Color. | 乌菲兹黄
Uffizi



cod. **OST-JG-1071**
·SPL:1075(1g)+Base(38g)
·5KG(Supported by dispenser)



cod. **OST-JG-1072**
·SPL: Mix 200g
·5KG(Supported by dispenser)



cod. **OST-JG-1073**
·SPL: Mix 200g
·5KG(Supported by dispenser)



cod. **OST-JG-1074**
·SPL: Mix 200g
·5KG(Supported by dispenser)



cod. **OST-JG-1075**
·SPL: Mix 200g
·5KG(Supported by dispenser)

Color. | 波波里黄
Boboli



cod. **OST-JG-1081**
·SPL:1085(1g)+Base(38g)
·5KG(Supported by dispenser)



cod. **OST-JG-1082**
·SPL: Mix 200g
·5KG(Supported by dispenser)



cod. **OST-JG-1083**
·SPL: Mix 200g
·5KG(Supported by dispenser)



cod. **OST-JG-1084**
·SPL: Mix 200g
·5KG(Supported by dispenser)



cod. **OST-JG-1085**
·SPL: Mix 200g
·5KG(Supported by dispenser)

Color. | 维奇奥棕
Vecchio



cod. **OST-JG-1091**
·SPL:1095(1g)+Base(38g)
·5KG(Supported by dispenser)



cod. **OST-JG-1092**
·SPL: Mix 200g
·5KG(Supported by dispenser)



cod. **OST-JG-1093**
·SPL: Mix 200g
·5KG(Supported by dispenser)



cod. **OST-JG-1094**
·SPL: Mix 200g
·5KG(Supported by dispenser)



cod. **OST-JG-1095**
·SPL: Mix 200g
·5KG(Supported by dispenser)



Color. | 阿诺棕
Arno



cod. **OST-JG-1101**
·SPL: 1105(1g)+Base(38g)
·5KG(Supported by dispenser)



cod. **OST-JG-1102**
·SPL: Mix 200g
·5KG(Supported by dispenser)



cod. **OST-JG-1103**
·SPL: Mix 200g
·5KG(Supported by dispenser)



cod. **OST-JG-1104**
·SPL: Mix 200g
·5KG(Supported by dispenser)



cod. **OST-JG-1105**
·SPL: Mix 200g
·5KG(Supported by dispenser)

Color. | 切奇纳棕
Cecina



cod. **OST-JG-1111**
·SPL: 1115(1g)+Base(38g)
·5KG(Supported by dispenser)



cod. **OST-JG-1112**
·SPL: Mix 200g
·5KG(Supported by dispenser)



cod. **OST-JG-1113**
·SPL: Mix 200g
·5KG(Supported by dispenser)



cod. **OST-JG-1114**
·SPL: Mix 200g
·5KG(Supported by dispenser)



cod. **OST-JG-1115**
·SPL: Mix 200g
·5KG(Supported by dispenser)

Color. | 乔凡尼褐
Giovanni



cod. **OST-JG-1121**
·SPL: Mix 200g
·5KG(Supported by dispenser)



cod. **OST-JG-1122**
·SPL: Mix 200g
·5KG(Supported by dispenser)



cod. **OST-JG-1123**
·SPL: Mix 200g
·5KG(Supported by dispenser)



cod. **OST-JG-1124**
·SPL: Mix 200g
·5KG(Supported by dispenser)



cod. **OST-JG-1125**
·SPL: Mix 200g
·5KG(Supported by dispenser)



OURSTUCCO · DIAMOND MICRO-CEMENT / UNIVERSAL PLASTER FOR FLOOR

Color. |
Novella | 诺维拉红



cod.OST-JG-1131
·SPL: Mix 200g
·5KG(Supported by dispenser)

cod.OST-JG-1132
·SPL: Mix 200g
·5KG(Supported by dispenser)

cod.OST-JG-1133
·SPL: Mix 200g
·5KG(Supported by dispenser)

cod.OST-JG-1134
·SPL: Mix 200g
·5KG(Supported by dispenser)

cod.OST-JG-1135
·SPL: Mix 200g
·5KG(Supported by dispenser)

Color. |
Medici | 美第奇红



cod.OST-JG-1141
·SPL:1145(1g)+Base(38g)
·5KG(Supported by dispenser)

cod.OST-JG-1142
·SPL: Mix 200g
·5KG(Supported by dispenser)

cod.OST-JG-1143
·SPL: Mix 200g
·5KG(Supported by dispenser)

cod.OST-JG-1144
·SPL: Mix 200g
·5KG(Supported by dispenser)

cod.OST-JG-1145
·SPL: Mix 200g
·5KG(Supported by dispenser)

Color. |
St.Mark | 圣马可紫



cod.OST-JG-1151
·SPL: Mix 200g
·5KG(Supported by dispenser)

cod.OST-JG-1152
·SPL: Mix 200g
·5KG(Supported by dispenser)

cod.OST-JG-1153
·SPL: Mix 200g
·5KG(Supported by dispenser)

cod.OST-JG-1154
·SPL: Mix 200g
·5KG(Supported by dispenser)

cod.OST-JG-1155
·SPL: Mix 200g
·5KG(Supported by dispenser)

OURSTUCCO · 欧施泥®

OURSTUCCO · DIAMOND MICRO-CEMENT / UNIVERSAL PLASTER FOR FLOOR & ALL KINDS OF COLOR TONNED BY DISPENSER



Color. | 里亚托褐
Rialto



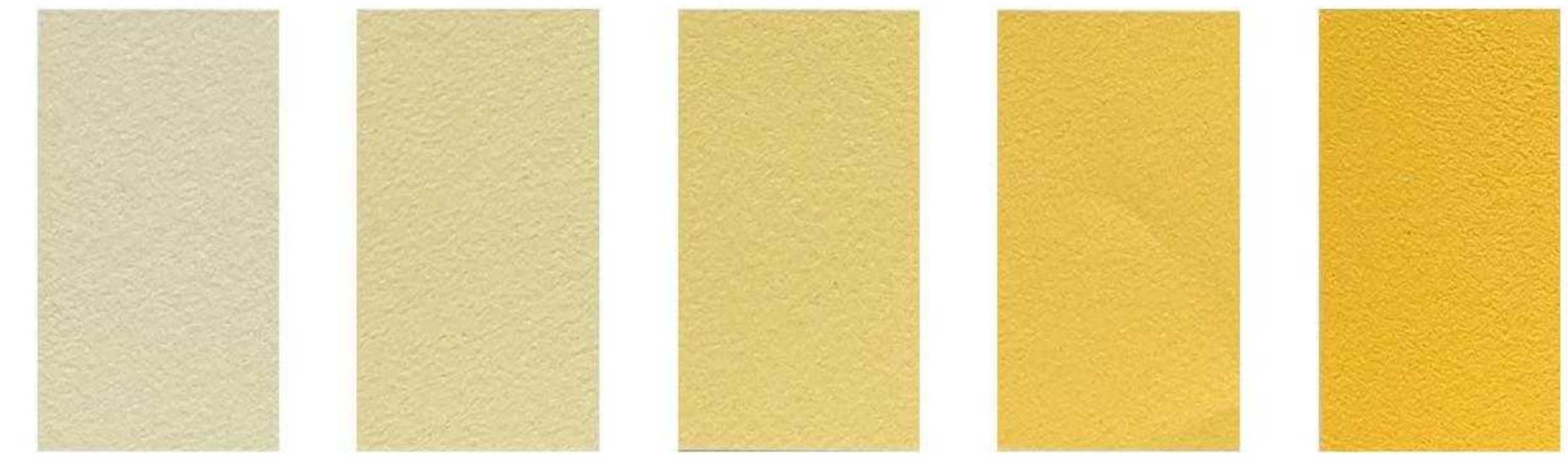
- cod.OST-JG-1161
·SPL: Mix 200g
·5KG(Supported by dispenser)
- cod.OST-JG-1162
·SPL: Mix 200g
·5KG(Supported by dispenser)
- cod.OST-JG-1163
·SPL: Mix 200g
·5KG(Supported by dispenser)
- cod.OST-JG-1164
·SPL: Mix 200g
·5KG(Supported by dispenser)
- cod.OST-JG-1165
·SPL: Mix 200g
·5KG(Supported by dispenser)

Color. | 维罗纳紫
Verona



- cod.OST-JG-1171
·SPL:1175(1g)+Base(38g)
·5KG(Supported by dispenser)
- cod.OST-JG-1172
·SPL: Mix 200g
·5KG(Supported by dispenser)
- cod.OST-JG-1173
·SPL: Mix 200g
·5KG(Supported by dispenser)
- cod.OST-JG-1174
·SPL: Mix 200g
·5KG(Supported by dispenser)
- cod.OST-JG-1175
·SPL: Mix 200g
·5KG(Supported by dispenser)

Color. | 菲伦戈棕
Fillungo

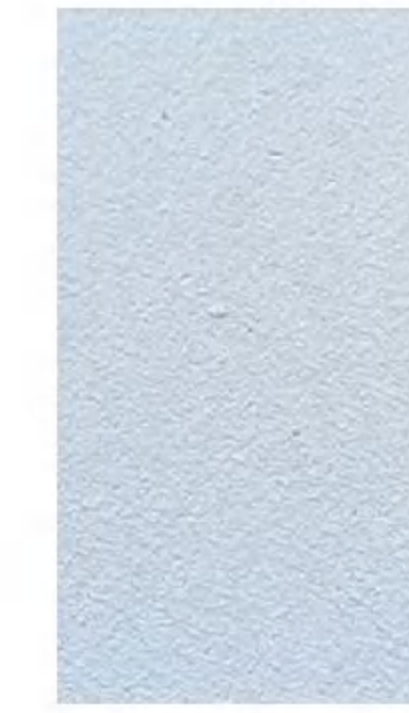


- cod.OST-JG-1181
·SPL:1185(1g)+Base(38g)
·5KG(Supported by dispenser)
- cod.OST-JG-1182
·SPL: Mix 200g
·5KG(Supported by dispenser)
- cod.OST-JG-1183
·SPL: Mix 200g
·5KG(Supported by dispenser)
- cod.OST-JG-1184
·SPL: Mix 200g
·5KG(Supported by dispenser)
- cod.OST-JG-1185
·SPL: Mix 200g
·5KG(Supported by dispenser)

OURSTUCCO · 欧施泥®



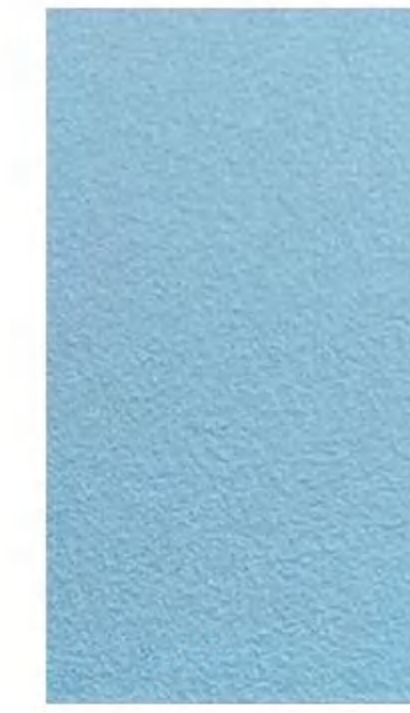
Color. | 卡西诺绿
Cassino | 卡西诺绿



cod.OST-JG-1191
·SPL:1195(1g)+Base(38g)
·5KG(Supported by dispenser)



cod.OST-JG-1192
·SPL: Mix 200g
·5KG(Supported by dispenser)



cod.OST-JG-1193
·SPL: Mix 200g
·5KG(Supported by dispenser)

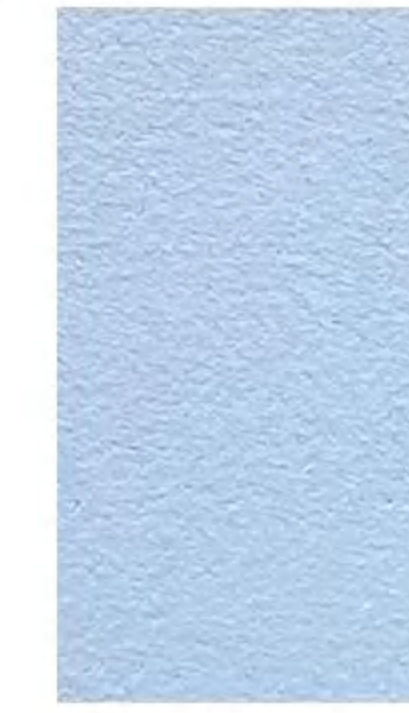


cod.OST-JG-1194
·SPL: Mix 200g
·5KG(Supported by dispenser)



cod.OST-JG-1195
·SPL: Mix 200g
·5KG(Supported by dispenser)

Color. | 洛伦佐蓝
Lorenzo | 洛伦佐蓝



cod.OST-JG-1201
·SPL:1205(1g)+Base(38g)
·5KG(Supported by dispenser)



cod.OST-JG-1202
·SPL: Mix 200g
·5KG(Supported by dispenser)



cod.OST-JG-1203
·SPL: Mix 200g
·5KG(Supported by dispenser)



cod.OST-JG-1204
·SPL: Mix 200g
·5KG(Supported by dispenser)



cod.OST-JG-1205
·SPL: Mix 200g
·5KG(Supported by dispenser)

Color. | 佛拉里蓝
Ferrari | 佛拉里蓝



cod.OST-JG-1211
·SPL:1215(1g)+Base(38g)
·5KG(Supported by dispenser)



cod.OST-JG-1212
·SPL:1215(1g)+Base(14.6g)
·5KG(Supported by dispenser)



cod.OST-JG-1213
·SPL: Mix 200g
·5KG(Supported by dispenser)



cod.OST-JG-1214
·SPL: Mix 200g
·5KG(Supported by dispenser)



cod.OST-JG-1215
·SPL: Mix 200g
·5KG(Supported by dispenser)



Color. Rosso | 罗素绿



cod.OST-JG-1221
·SPL:1225(1g)+Base(38g)
·5KG(Supported by dispenser)



cod.OST-JG-1222
·SPL:1225(1g)+Base(14.6g)
·5KG(Supported by dispenser)



cod.OST-JG-1223
·SPL: Mix 200g
·5KG(Supported by dispenser)



cod.OST-JG-1224
·SPL: Mix 200g
·5KG(Supported by dispenser)



cod.OST-JG-1225
·SPL: Mix 200g
·5KG(Supported by dispenser)

Color. Doria | 多利亚蓝



cod.OST-JG-1231
·SPL:1235(1g)+Base(38g)
·5KG(Supported by dispenser)



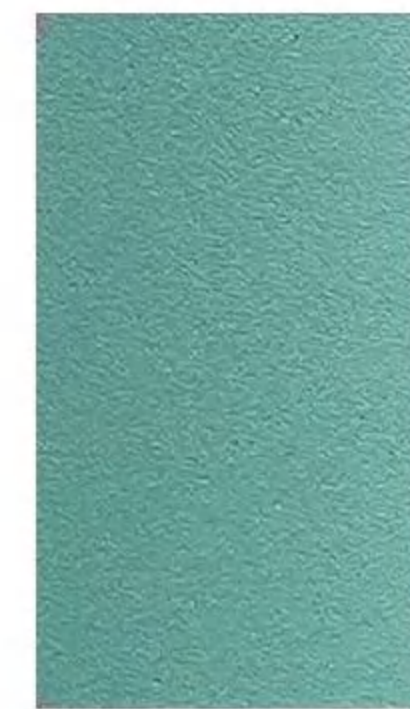
cod.OST-JG-1232
·SPL: Mix 200g
·5KG(Supported by dispenser)



cod.OST-JG-1233
·SPL: Mix 200g
·5KG(Supported by dispenser)

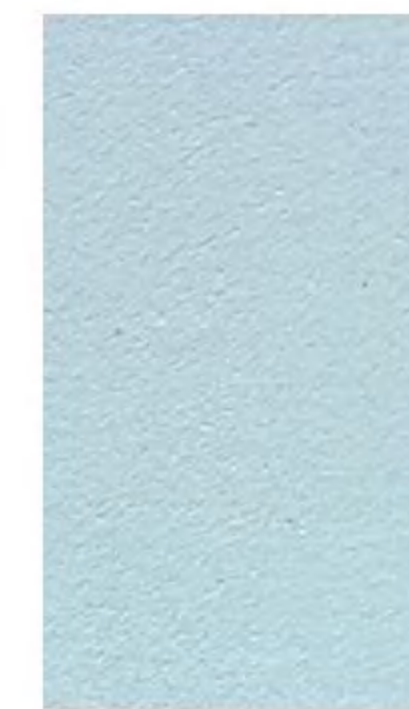


cod.OST-JG-1234
·SPL: Mix 200g
·5KG(Supported by dispenser)



cod.OST-JG-1235
·SPL: Mix 200g
·5KG(Supported by dispenser)

Color. Asolo | 阿索洛蓝



cod.OST-JG-1241
·SPL:1245(1g)+Base(38g)
·5KG(Supported by dispenser)



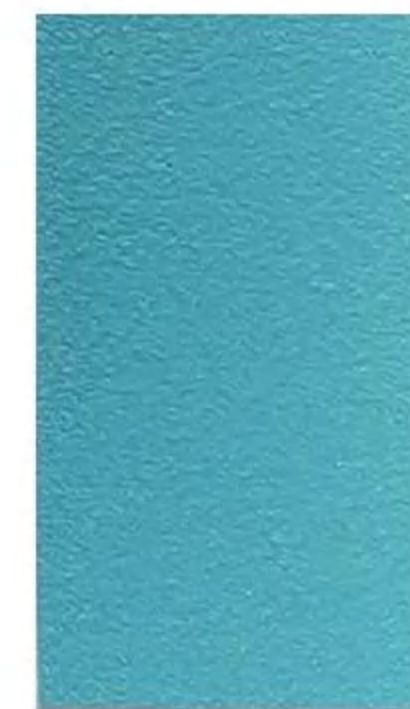
cod.OST-JG-1242
·SPL:1245(1g)+Base(14.6g)
·5KG(Supported by dispenser)



cod.OST-JG-1243
·SPL: Mix 200g
·5KG(Supported by dispenser)

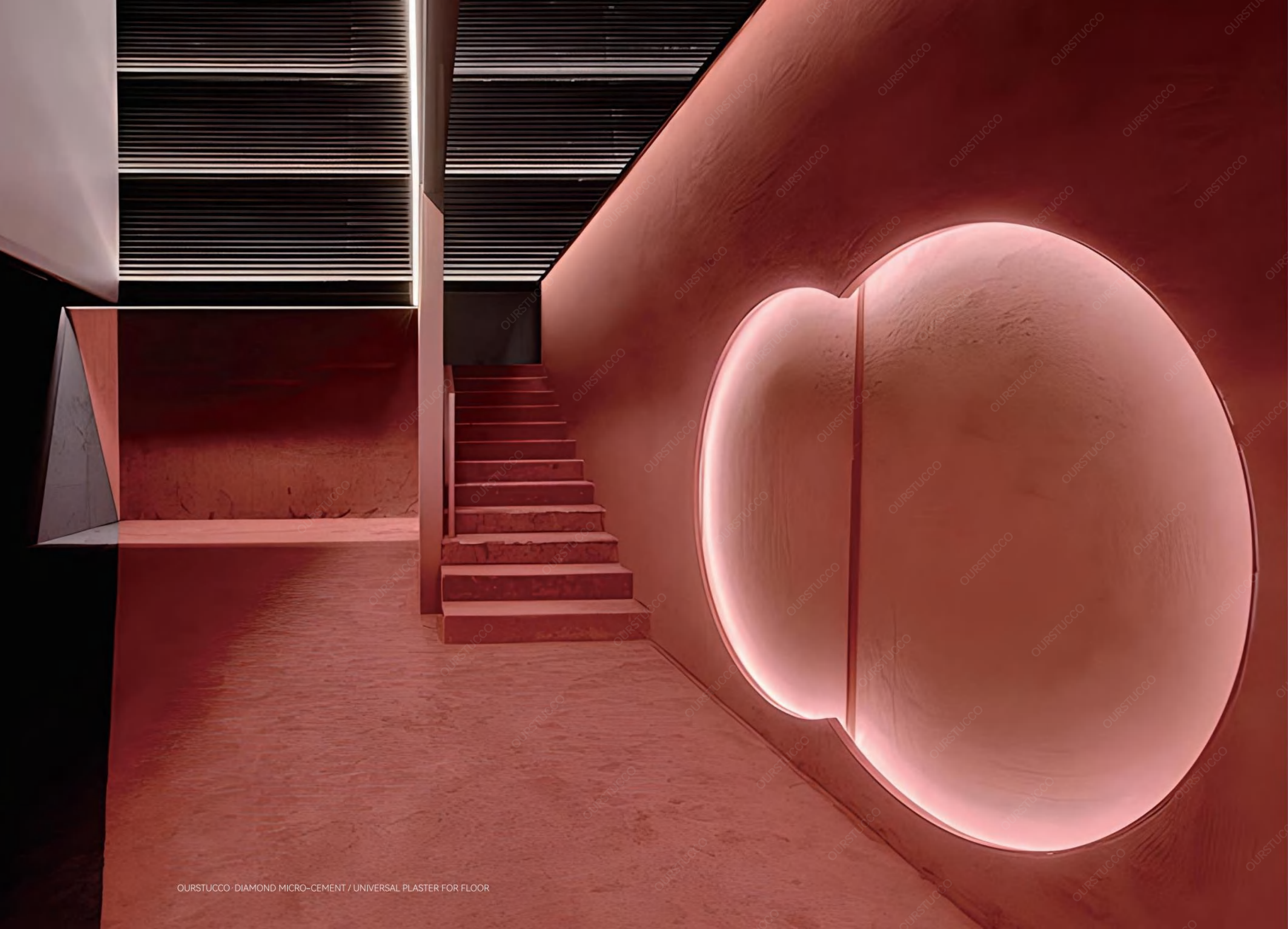


cod.OST-JG-1244
·SPL: Mix 200g
·5KG(Supported by dispenser)



cod.OST-JG-1245
·SPL: Mix 200g
·5KG(Supported by dispenser)

OURSTUCCO · 欧施泥®



Warm.

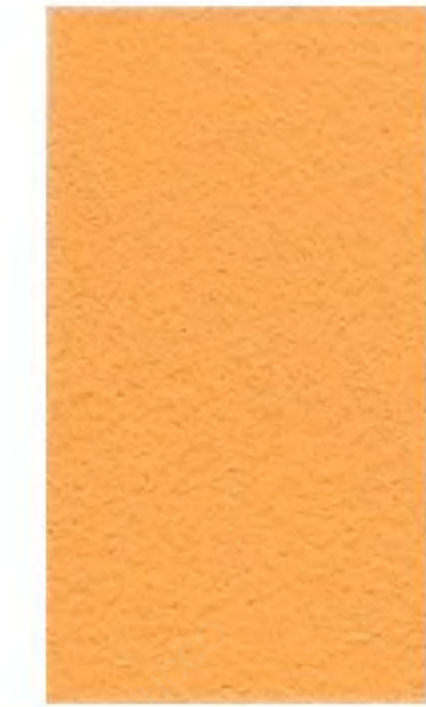
- Montaione | 蒙塔约内黄1255
- Canazei | 卡纳泽伊黄1265
- Ortisei | 奥蒂塞伊黄1275
- Brenzone | 布伦佐内橙1285
- Formia | 福尔米亚橙1295



cod.OST-JG-1255
*5KG(Supported by dispenser)
1251 1252 1253 1254



cod.OST-JG-1265
*5KG(Supported by dispenser)
1261 1262 1263 1264



cod.OST-JG-1275
*5KG(Supported by dispenser)
1271 1272 1273 1274



cod.OST-JG-1285
*5KG(Supported by dispenser)
1281 1282 1283 1284



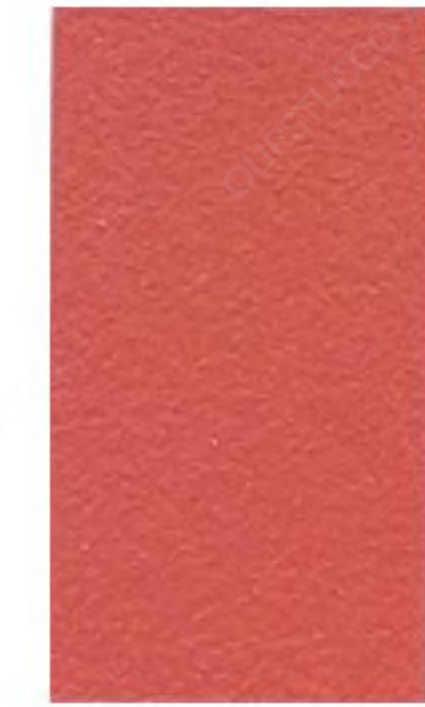
cod.OST-JG-1295
*5KG(Supported by dispenser)
1291 1292 1293 1294

Warm.

- Trappeto | 特拉佩托橙1305
- Marinella | 马里内拉红1315
- Cabras | 卡布拉斯红1325
- Riposto | 里波斯托赭1335
- Crotone | 克罗托内赭1345



cod.OST-JG-1305
*5KG(Supported by dispenser)
1301 1302 1303 1304



cod.OST-JG-1315
*5KG(Supported by dispenser)
1311 1312 1313 1314



cod.OST-JG-1325
*5KG(Supported by dispenser)
1321 1322 1323 1324



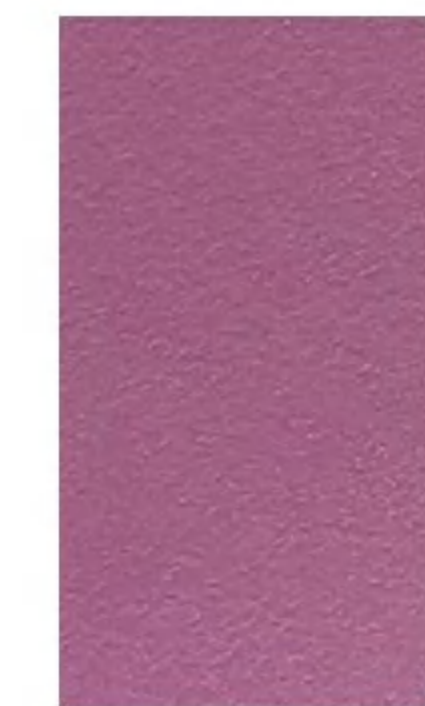
cod.OST-JG-1335
*5KG(Supported by dispenser)
1331 1332 1333 1334



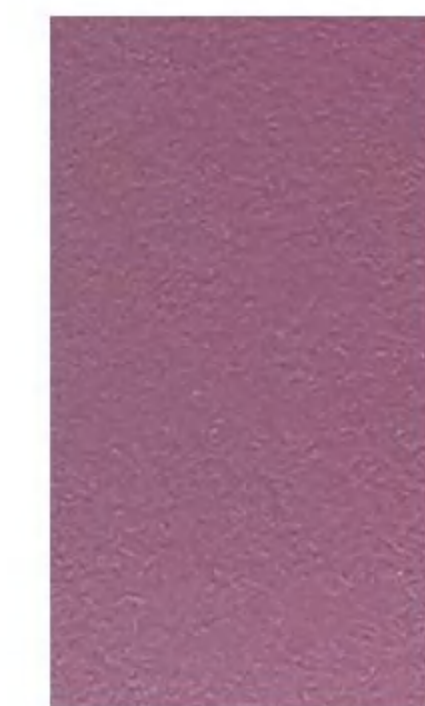
cod.OST-JG-1345
*5KG(Supported by dispenser)
1341 1342 1343 1344

Warm.

- Poggibonsi | 波吉邦西褐1355
- Massarosa | 马萨罗萨褐1365
- Cannobio | 坎诺比亚棕1375
- Palinuro | 巴利努诺棕1385
- Letoianni | 勒托阳尼棕1395



cod.OST-JG-1355
*5KG(Supported by dispenser)
1351 1352 1353 1354



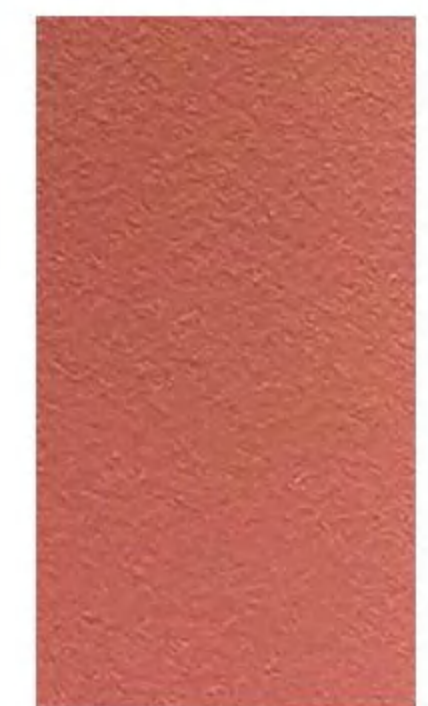
cod.OST-JG-1365
*5KG(Supported by dispenser)
1361 1362 1363 1364



cod.OST-JG-1375
*5KG(Supported by dispenser)
1371 1372 1373 1374



cod.OST-JG-1385
*5KG(Supported by dispenser)
1381 1382 1383 1384

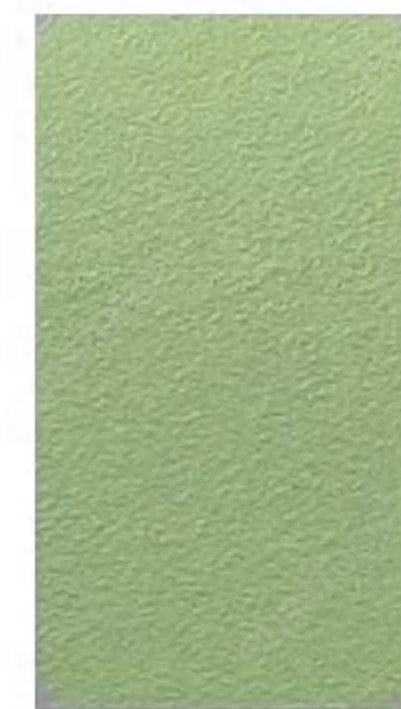


cod.OST-JG-1395
*5KG(Supported by dispenser)
1391 1392 1393 1394



Cold.

- Certaldo | 切塔尔多绿1405
- Torbole | 托尔博莱绿1415
- Taviano | 塔维亚诺绿1425
- Molveno | 莫尔韦诺蓝1435
- Bagheria | 巴盖里亚蓝1445



cod.OST-JG-1405
*5KG(Supported by dispenser)
1401 1402 1403 1404



cod.OST-JG-1415
*5KG(Supported by dispenser)
1411 1412 1413 1414



cod.OST-JG-1425
*5KG(Supported by dispenser)
1421 1422 1423 1424



cod.OST-JG-1435
*5KG(Supported by dispenser)
1431 1432 1433 1434



cod.OST-JG-1445
*5KG(Supported by dispenser)
1441 1442 1443 1444

Cold.

- Racines | 拉奇内斯蓝1455
- Brescia | 布雷西亚蓝1465
- Cagliari | 卡利亚里蓝1475
- Trapani | 特拉帕尼蓝1485
- Camaione | 卡麦奥雷紫1495



cod.OST-JG-1455
*5KG(Supported by dispenser)
1451 1452 1453 1454



cod.OST-JG-1465
*5KG(Supported by dispenser)
1461 1462 1463 1464



cod.OST-JG-1475
*5KG(Supported by dispenser)
1471 1472 1473 1474



cod.OST-JG-1485
*5KG(Supported by dispenser)
1481 1482 1483 1484



cod.OST-JG-1495
*5KG(Supported by dispenser)
1491 1492 1493 1494

Cold.

- Alghero | 阿尔盖罗紫1505
- Cattolica | 卡托利卡紫1515
- Follonica | 福洛尼卡紫1525
- Bardolino | 巴多利诺灰1535
- Volterra | 沃尔泰拉灰1545



cod.OST-JG-1505
*5KG(Supported by dispenser)
1501 1502 1503 1504



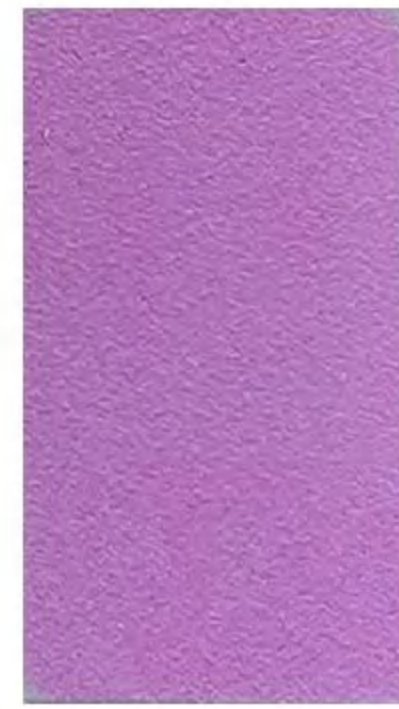
cod.OST-JG-1515
*5KG(Supported by dispenser)
1511 1512 1513 1514



cod.OST-JG-1525
*5KG(Supported by dispenser)
1521 1522 1523 1524



cod.OST-JG-1535
*5KG(Supported by dispenser)
1531 1532 1533 1534



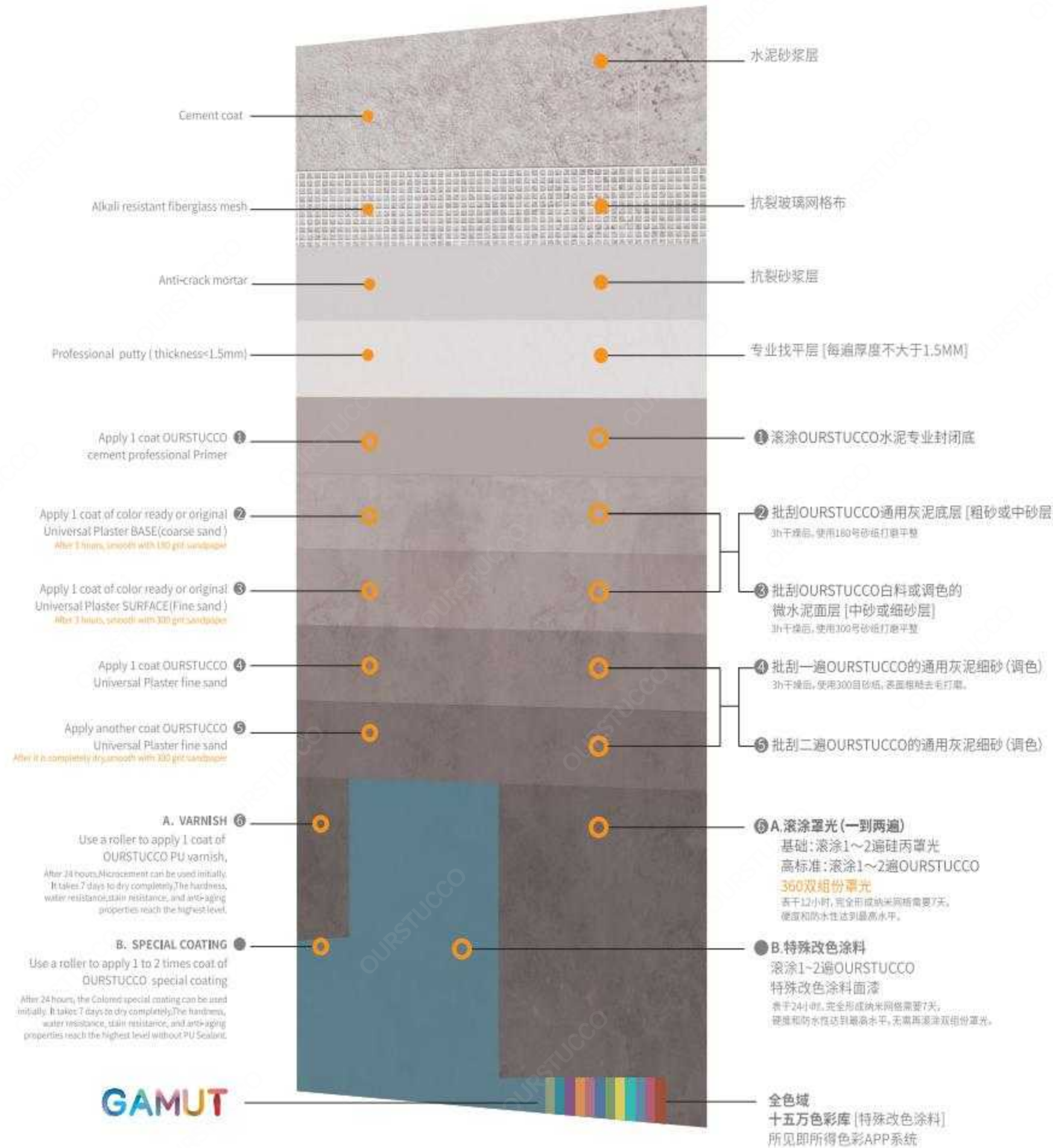
cod.OST-JG-1545
*5KG(Supported by dispenser)
1541 1542 1543 1544



WALL

OF UNIVERSAL PLASTER

OURSTUCCO墙面通用灰泥标准施工工艺



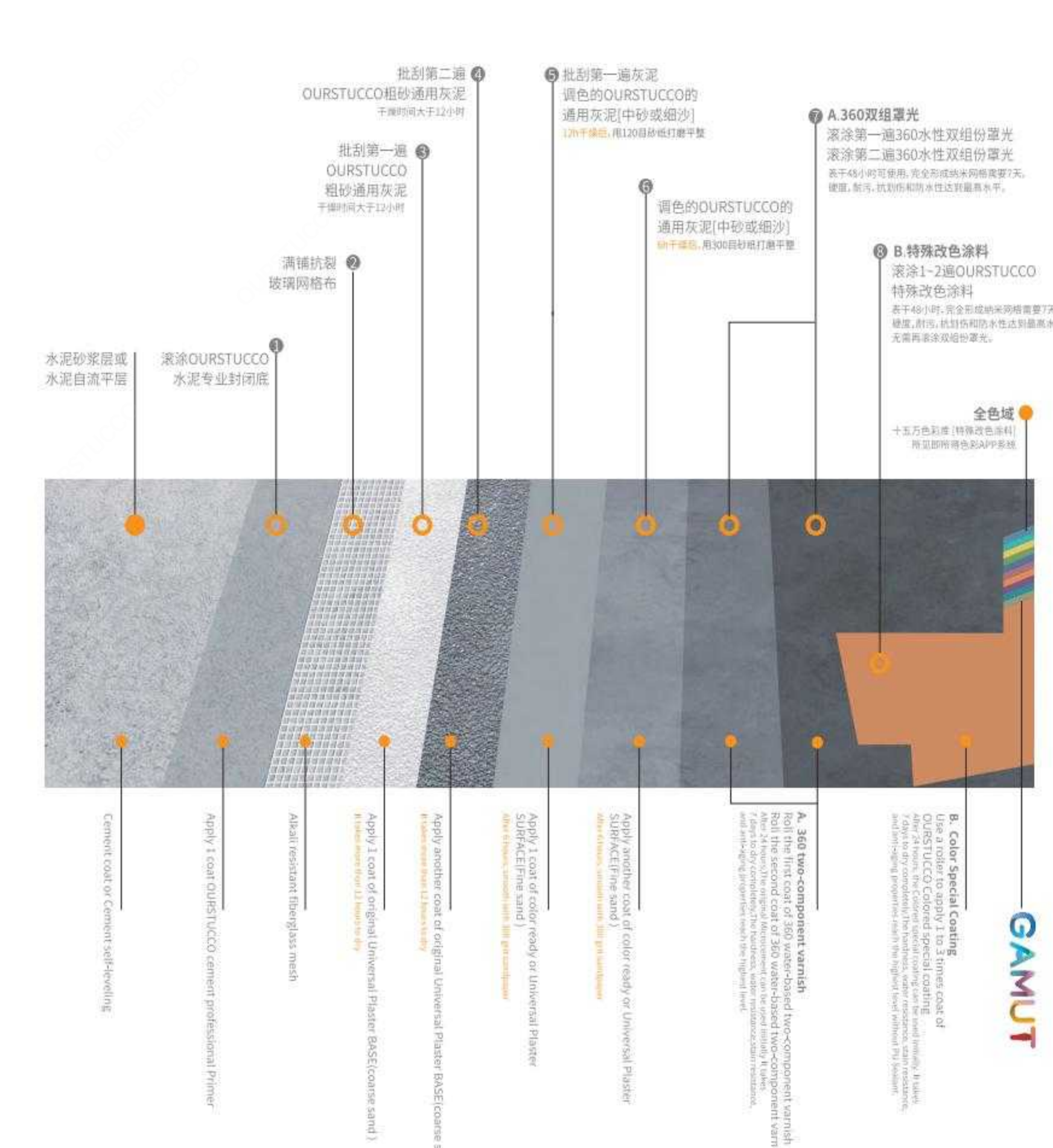
注意事项:

- 当墙体条件不同时, 请咨询厂家或代理商, 更加符合实际施工情况。
- 施工过程中, 防止交叉污染, 避免后期施工造成不必要的麻烦。
- 施工完成后, 保持施工现场的整洁, 及时清理建筑垃圾。
- 施工过程中, 注意墙面的清洁, 避免灰尘堆积。
- 施工过程中, 注意墙面的湿度, 避免水分过多。
- 施工过程中, 注意墙面的温度, 避免温度过低。
- 施工过程中, 注意墙面的通风, 避免空气不流通。
- 施工过程中, 注意墙面的防水, 避免水分渗透。
- 施工过程中, 注意墙面的防火, 避免火灾发生。
- 施工过程中, 注意墙面的防腐, 避免腐蚀发生。
- 施工过程中, 注意墙面的防霉, 避免霉菌滋生。
- 施工过程中, 注意墙面的防虫, 避免虫害发生。
- 施工过程中, 注意墙面的防噪, 避免噪音干扰。
- 施工过程中, 注意墙面的防辐射, 避免辐射危害。
- 施工过程中, 注意墙面的防电磁, 避免电磁干扰。
- 施工过程中, 注意墙面的防辐射, 避免辐射危害。
- 施工过程中, 注意墙面的防电磁, 避免电磁干扰。

FLOOR

OF UNIVERSAL PLASTER

OURSTUCCO通用灰泥地面标准施工工艺



注意事项:

- 施工过程中, 防止交叉污染, 避免后期施工造成不必要的麻烦。
- 施工过程中, 保持施工现场的整洁, 及时清理建筑垃圾。
- 施工过程中, 注意地面的清洁, 避免灰尘堆积。
- 施工过程中, 注意地面的湿度, 避免水分过多。
- 施工过程中, 注意地面的温度, 避免温度过低。
- 施工过程中, 注意地面的通风, 避免空气不流通。
- 施工过程中, 注意地面的防水, 避免水分渗透。
- 施工过程中, 注意地面的防火, 避免火灾发生。
- 施工过程中, 注意地面的防腐, 避免腐蚀发生。
- 施工过程中, 注意地面的防霉, 避免霉菌滋生。
- 施工过程中, 注意地面的防虫, 避免虫害发生。
- 施工过程中, 注意地面的防噪, 避免噪音干扰。
- 施工过程中, 注意地面的防辐射, 避免辐射危害。
- 施工过程中, 注意地面的防电磁, 避免电磁干扰。
- 施工过程中, 注意地面的防辐射, 避免辐射危害。
- 施工过程中, 注意地面的防电磁, 避免电磁干扰。



OURSTUCCO DIAMOND MICRO-CEMENT SERIES:

The latest Diamond micro-cement launched by OURSTUCCO company in the United States is made of high-performance single-component polyurethane, silica quartz, and inorganic fillers and other raw materials, the production of ultra-high hardness, wall-to-ground integrated universal mortar. High compressive strength, super robustness, outstanding flexibility and excellent adhesion. At the same time, the construction period of micro-cement can be greatly shortened and the overall engineering quality of micro-cement can be improved.

•Diamond micro-cement (universal plaster) wall process:

1. Anti-cracking mortar or putty leveling.
2. Roller coating OURSTUCCO cement professional sealing primer.
3. Batch scratch OURSTUCCO's diamond micro-cement base (coarse sand or medium sand layer). Dry grinding after 6 hours
4. Batch scraped white material or toned OURSTUCCO's diamond micro-cement surface (medium sand or fine sand). Dry grinding after 6 hours.
5. Apply black hole mask or two-component mask once as required.

*Note: The wall base that meets the national wall base acceptance standard only needs to scrape the diamond micro-cement fine sand surface layer twice.

•Diamond micro-cement (universal plaster) ground construction technology:

- Cement mortar layer or cement self-leveling layer
1. Roller coating OURSTUCCO cement professional sealing bottom.
 2. Full spread anti-crack glass fiber mesh cloth.
 3. Batch scrape the first OURSTUCCO diamond coarse sand micro-cement cushion (drying time is greater than 24h).
 4. Batch scrape the OURSTUCCO diamond coarse sand micro-cement cushion for a second time (drying time is greater than 12h).
 5. Batch scrape the first white or toned OURSTUCCO diamond micro-cement surface (medium sand or fine sand). Dry grinding after 12 hours.
 6. Batch of the second white or toned OURSTUCCO diamond micro-cement surface layer (medium sand or fine sand). Dry grinding after 6 hours.
 7. Roll and apply OURSTUCCO Nano micro cement water-based two-component coating. The surface dries for 24 hours, and it takes 21 days to fully form the nanogrid, with the highest level of hardness, stain resistance, scratch resistance and water resistance.

OURSTUCCO公司金刚石微水泥系列

产品施工流程:

美国OURSTUCCO公司最新推出的金刚石微水泥是由高性能单组分聚氨酯, 二氧化硅石英, 和无机填料等原材料, 制作而成的超高硬度, 墙地一体化通用灰泥。具有高抗压强度、超强坚固性、杰出的柔韧性和极好的附着力。同时可大大缩短微水泥的施工周期, 提高微水泥整体的工程质量。

•金刚石微水泥(通用灰泥)墙面工艺:

1. 抗裂砂浆或腻子找平。
 2. 滚涂OURSTUCCO水泥专业封闭底漆。
 3. 批刮OURSTUCCO的金刚石微水泥底层(粗砂或中砂层)。干燥6h后, 使用180号砂纸打磨平整。
 4. 批刮白料或调色的OURSTUCCO的金刚石微水泥面层(中砂或细沙)。干燥6h后, 用300目砂纸打磨平整。
 5. 根据要求滚涂黑洞罩光或者双组分罩光一遍。
- 备注: 符合国家墙面基层验收标准的墙面基层, 只需批刮金刚石微水泥细砂面层两遍即可。

•金刚石微水泥(通用灰泥)地面施工工艺:

- 水泥砂浆层或水泥自流平层
1. 滚涂OURSTUCCO水泥专业封闭底。
 2. 满铺抗裂玻纤网格布。
 3. 批刮第一遍OURSTUCCO金刚石粗砂微水泥垫层(干燥时间大于24h)。
 4. 批刮第二遍OURSTUCCO金刚石粗砂微水泥垫层(干燥时间大于12h)。
 5. 批刮第一遍白料或调色的OURSTUCCO金刚石微水泥面层(中砂或细沙)。干燥12h后, 用120目砂纸打磨平整。
 6. 批刮第二遍白料或调色的OURSTUCCO金刚石微水泥面层(中砂或细沙)。干燥6h后, 用300目砂纸打磨平整
 7. 滚涂一遍OURSTUCCO纳米微水泥水性双组份罩光。表干24h, 完全形成纳米网格需要21天, 硬度、耐污、抗划伤和防水性达到最高水平。

样块制作成本:

368元/册