

OURSTUCCO色彩APP系统
世界权威涂料CMYK(色彩)电子词典

ORIGIN-
NANO-

MICRO CEMENT

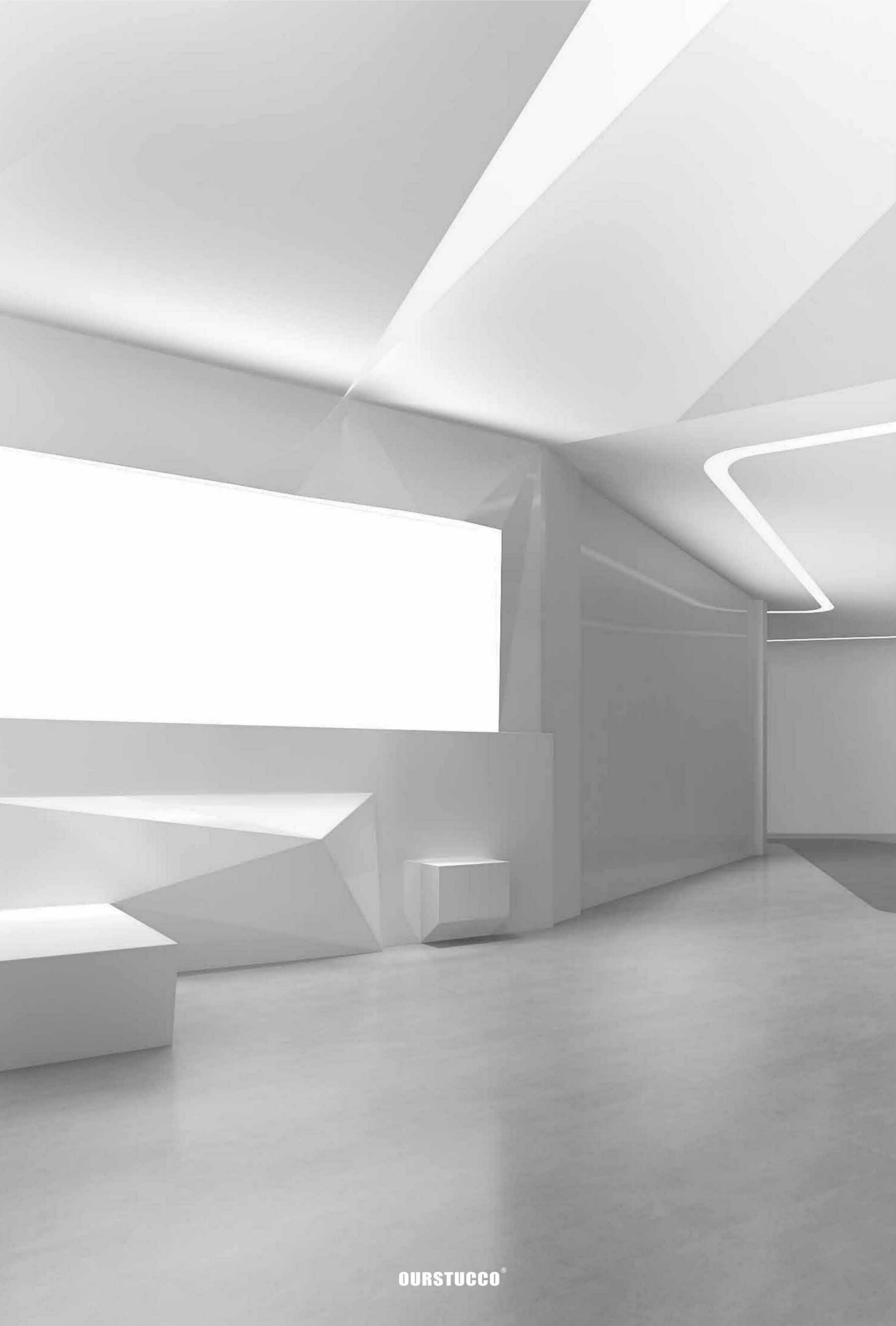
GAMUT

OURSTUCCO[®]
纳米微水泥



OURSTUCCO

The World Is Colorful
Why Not Your Rooms
色彩改变世界 品质源于专业



MICRO CEMENT

微水泥

ALL space without limits
天地一体化设计

Microcement is a high-quality cement-based inorganic coating product.
The raw materials include imported high-grade cement, nano-polymer, silica filler (quartz), etc.

Micro-cement can truly realize the application of "heaven-earth integrated color", whether on ceramic tiles, glass, steel, aluminum, wood, or cement, ceramics, PVC and other materials.
The color can be applied without limit whether on the floor, wall, bathroom, window frame, door, furniture or parking lot, swimming pool.

微水泥是一类水泥基的高品质无机类涂层产品。

原材料包括进口高标号水泥, 纳米聚合物, 二氧化硅填充料(石英)等。

微水泥, 可以真正实现“天地一体化色彩”应用, 无论瓷砖, 玻璃, 钢铁, 铝材, 木材, 还是水泥, 陶瓷, PVC等材质。

可以将色彩延伸到极致, 无论是地面, 墙面, 卫生间, 窗框, 门, 家具或是停车场, 游泳池.....



TWO PARTS

Origin-MICROCEMENT 基础微水泥 [素微水泥]

Nano MICROCEMENT 纳米微水泥 [彩色纳米微水泥]

Basic
Part I

ORIGIN-MICROCEMENT TWO-COMPONENT

双组份素微水泥



EXCELLENT FLEXIBILITY

Two-component original microcement is highly flexible and will not crack under extreme 360-degree bending within a certain range.

杰出的柔韧性

双组份素微水泥,在一定范围内有极高的柔韧性,即使弯折360度也不会开裂。



HIGH STRENGTH ADHESION

Our two-component original microcement has excellent adhesion properties. Can be directly applied to various substrates of different types of material such as marble, ceramic tile, glass, metal, wood, gypsum board and other substrate surface.

高强度粘附性

双组份素微水泥对各类基底的粘附性更好。

可以直接施工于大理石, 瓷砖, 玻璃, 金属, 木材, 水泥板等基材表面。



HIGH COMPRESSIVE STRENGTH

Compressive strength of original microcement in average: 3.72KG/mm²

Compressive strength of ceramic tile in average: 2.65KG/mm²

高抗压强度

素微水泥的平均抗压强度为3.72KG/mm²

瓷砖的平均抗压强度为:2.65KG/mm²



FIRE RESISTANCE:TOP

Glass top Non- combustible material for all kinds of the design applications.

防火等级:顶级(专业防火涂料外)

自身绝对不燃,满足最严格的各类空间要求。



TWO PARTS

Origin-MICROCEMENT 基础微水泥 [素微水泥]

Nano MICROCEMENT 纳米微水泥 [彩色纳米微水泥]

ORIGIN-MICROCEMENT TWO-COMPONENT

双组份素微水泥

Superior Water Resistance 超级级耐水性

Original microcement has excellent water resistance .

For bathroom or swimming pool application ,microcement can withstand the immersion or erosion of extreme water temperature for a long period of time.

Creates more possibilities for special space design.

素微水泥具有绝佳的耐水性能，
应用在卫生间，游泳池的微水泥可以承受长期的冷热水冲刷和浸泡。

为各类特殊空间的设计
提供了更多可能

Excellent Stain Resistance 绝佳的抗污性

Oil stains,tea stains,red wine,rust stains,glue stains,coat stains and other weak acid or weak alkaline stains,

Will not cause any damage to the original microcement.

The microcement has a self-cleaning function, and the cleaning have never been easier.

油渍，茶渍，红酒，铁锈，胶水，涂料等弱酸弱碱性的污渍，

不会对素微水泥造成任何的损害。

素微水泥带有自洁功能，清理非常简单。

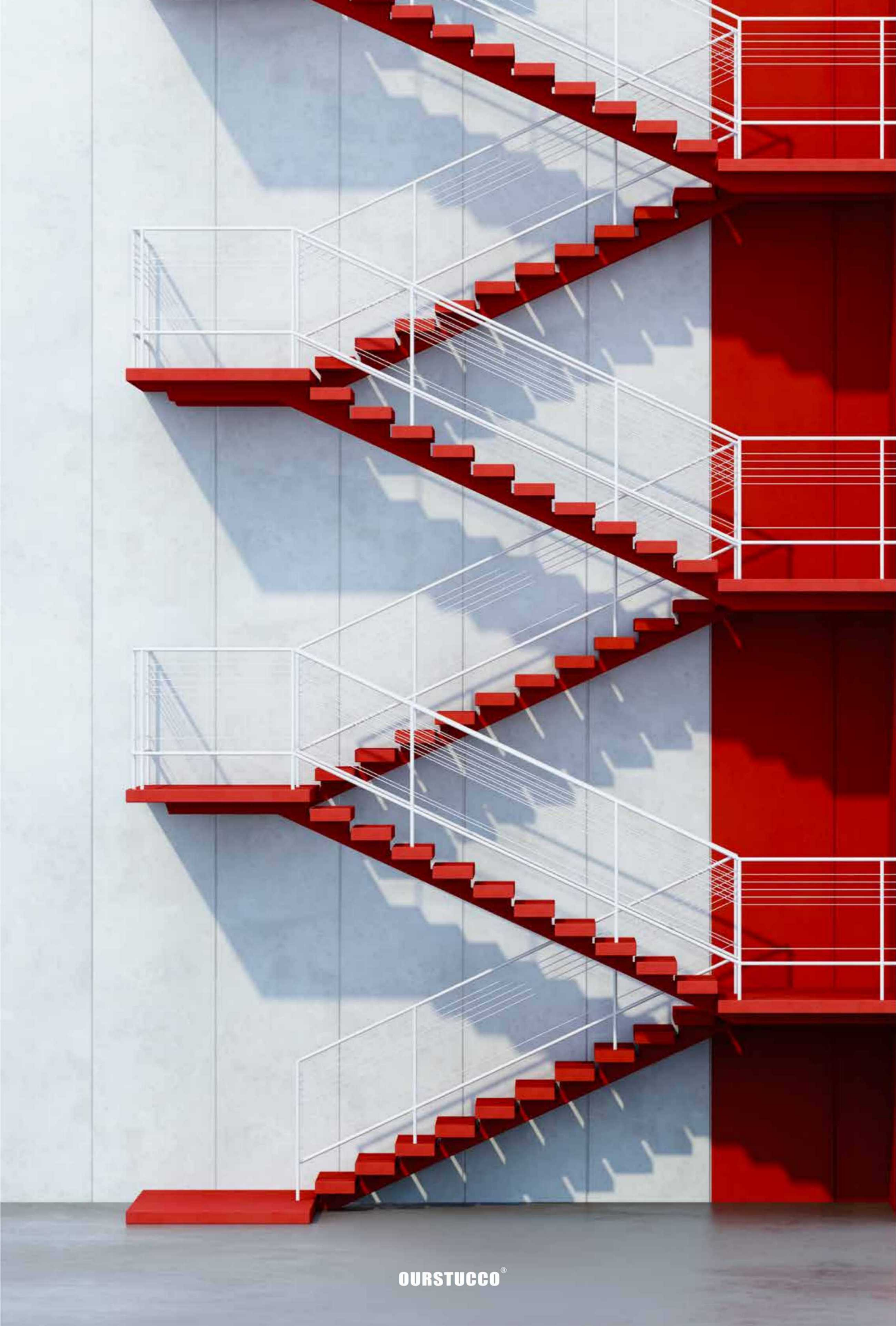
Inorganic Color 无机矿物色

Original microcement is toned with inorganic mineral color paste, Providing standard colors or DIY

Whether interior or exterior space,it ensures that the colour will not fade in daily use.

素微水泥采用无机色浆进行调色，厂家提供137标准色，也可以DIY。

无论室内还是室外空间，保证颜色经久不褪色。



TWO PARTS
Origin-MICROCEMENT 基础微水泥 [素微水泥]
Nano MICROCEMENT 纳米微水泥 [彩色纳米微水泥]

Gamut
Part II

NANO MICROCEMENT Full color gamut

彩色纳米微水泥 (全色域)

The Colored nano-microcement is a nano-permeable coating and an upgraded product of original microcement. It has all the properties and advantages of ordinary original microcement. At the same time, it can match more bright colors to cover the entire color gamut of paint coatings. (For outdoor applications, please use UV-resistant water-based color paste for exterior walls.)

After the original microcement base is constructed, the color nano-microcement can also be used for penetration coloring. This booklet provides 71 color nano microcement templates, and provides 1966 color nano microcement real RGB values. (When making the renderings, the designer can call the RGB value of the real color nano microcement, and ask the local agents and the company headquarter for 1966 standard templates of different colors at any time.)

Download the OURSTUCCO professional color APP and upgrade to a 100,000 color library for free. Any natural color and color card color of any coating brand can be replicated with color nano microcement.

(After downloading the APP, it is recommended to purchase the color picker pen from DATACOLOR, the world's first brand of color instrument, of which the sales price is CNY 3980/each with a database, or ask from a local partner. Connect the color picker to the OURSTUCCO professional color app, upgrade to licensed version, it can accurately replicate the true colors of buildings, various brand color cards and renderings, and accurately replicate the color nano-microcement templates.)

彩色纳米微水泥,是纳米渗透型涂料,是素微水泥升级产品,具有普通素微水泥的一切性能和优点,同时可以调配更多鲜艳的色彩,覆盖涂料涂层的全部色彩域。(室外应用时,请使用外墙耐紫外线-水性色浆)

底层**素微水泥**施工完毕后,也可使用**彩色纳米微水泥**进行渗透上色,本册提供**69块示例彩色纳米微水泥样板**,并提供**1966块彩色纳米微水泥真实RGB值**。

(设计师做效果图时,可随时调用真实彩色纳米微水泥的RGB值,并向当地代理商和公司总部,随时索要1966块不同颜色的标准样板)



下载OURSTUCCO专业色彩APP,免费升级为10万色彩库,任意自然界色彩,任意涂料品牌的色卡色彩,均可以用彩色纳米微水泥复制。

(下载APP后,推荐购买世界色彩仪器第一品牌DATACOLOR公司的取色笔,市场售价为3980元/每支,带数据库,或向当地合作商索要。用取色笔连接OURSTUCCO专业色彩APP,升级为正版,可以精准复制建筑物色彩,各个品牌色卡和各类效果图图片的真实色彩,并准确复制彩色纳米微水泥样板。)

OURSTUCCO色彩APP软件官方下载地址

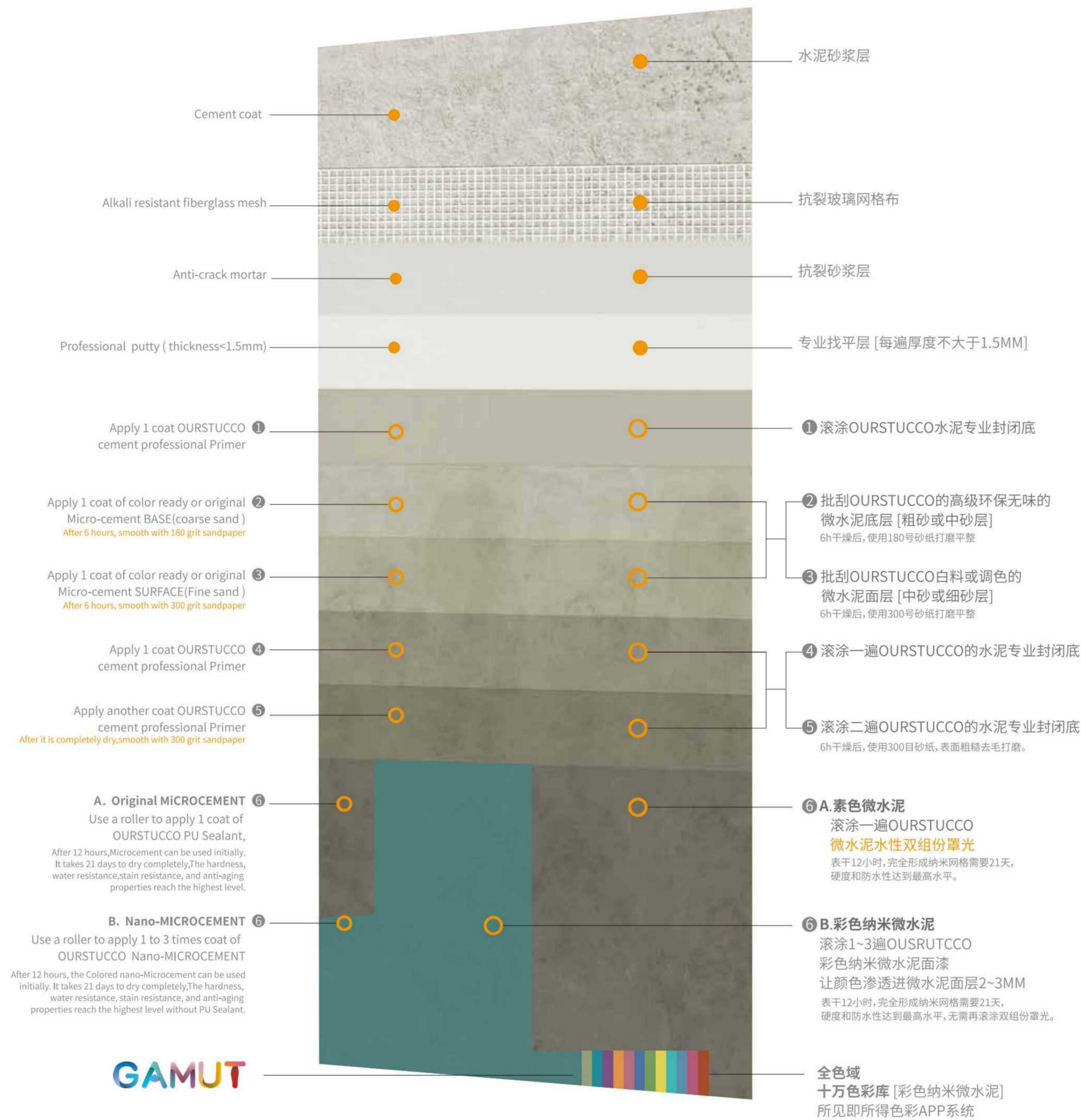


Android版取色APP下载



IOS苹果版取色APP下载

WALL OF MICROCEMENT OURSTUCCO微水泥墙面标准施工工艺



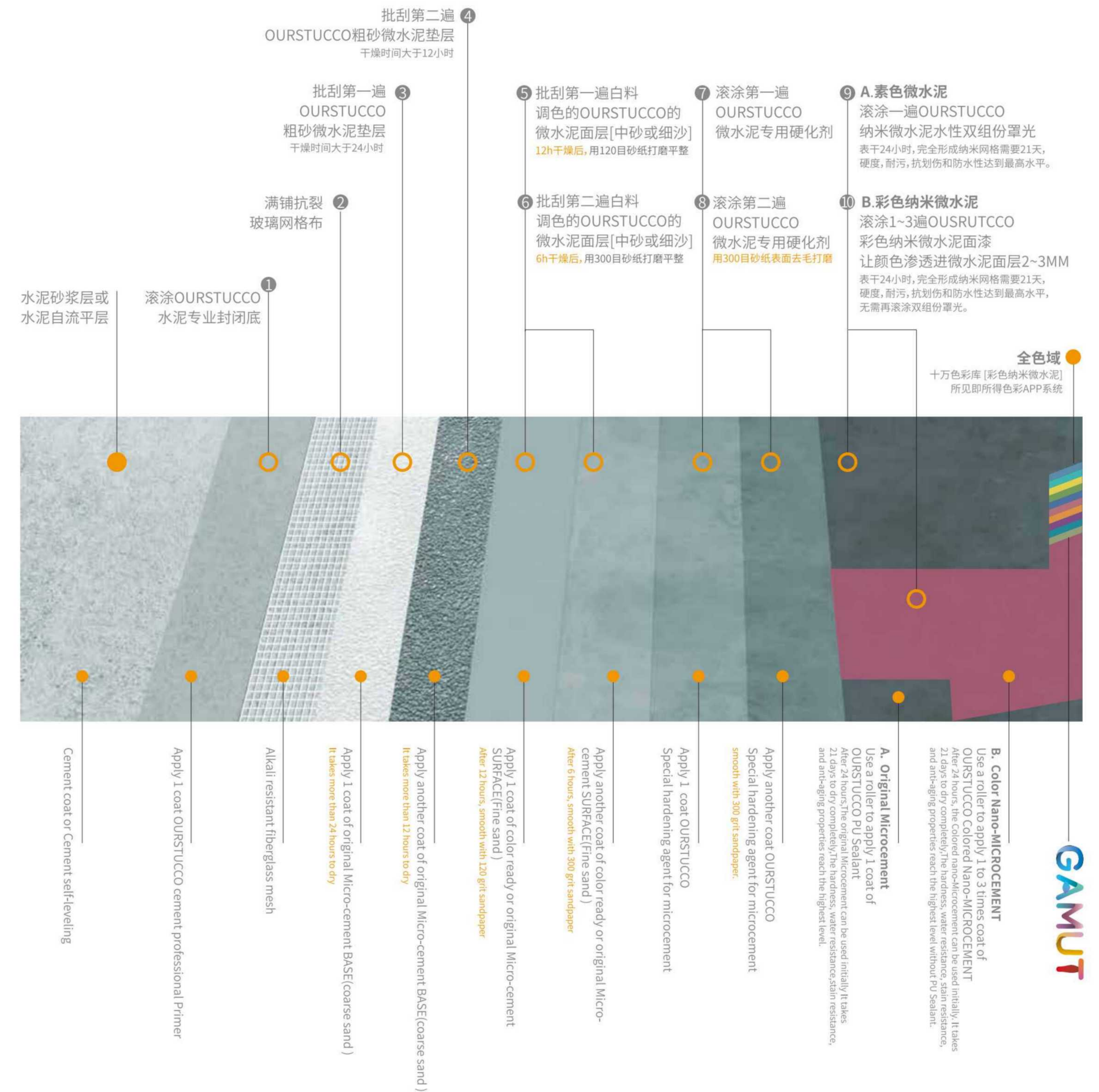
Precautions:

- When the wall conditions are different, please ask the manufacturer or agent for a process that is more in line with the actual situation.
- During the construction of the micro-cement wall, within 12 hours, prevent the wall from cross-contamination and all kinds of man-made damage
- After 48 hours drying, the nano-microcement can be used initially.
- After 21 days, the micro-cement construction layers have reached the best hardness and water-resistant and can be used normally.
- During use, pay attention to the cleanliness of the wall,
- The colored nano-microcement adopts the principle of penetrating paint. After the surface is dry, it has hardness, water resistance, stain resistance, and anti-aging properties. It can be used for 12 to 15 years without varnishing.
- Colored nano-microcement is used for indoor sunlight part or exterior wall construction. Please use exterior wall anti-ultraviolet color paste or inorganic color paste. For more details, please consult OURSTUCCO experts or regional agents

注意事项:

- 以上为微水泥墙面标准施工流程,具体墙面情况状态不同时,请向厂家或代理商索要,更加符合实际情况的施工流程。
- 微水泥墙面施工完成后,12小时内必须保持墙面无交叉污染,拒绝人为损坏等各类情况,
- 48小时后,微水泥的纳米水性面层,表面干燥后,就可以使用。
- 21天后,全部微水泥施工层达到最佳硬度和防水性,可以正常使用。
- 使用中,注意墙面的清洁卫生,微水泥完全成活后,耐污指数在墙面涂层中,达到顶级水平,可以放心使用
- 彩色纳米微水泥,采用渗透色漆原理,表面干燥后,硬度,防水,耐污,和抗老化性达到墙面涂料顶级水平,无需罩光,就可以使用12~15年。
- 室内阳光照射部分或外墙施工彩色纳米微水泥,请使用外墙抗紫外线色浆或无机色浆,具体请咨询OURSUTCCO品牌专家或地区代理商。

FLOOR OF MICROCEMENT OURSTUCCO微水泥地面标准施工工艺



Precautions:

- During the construction of the micro-cement floor, within 72 hours, prevent the floor from cross-contamination and all kinds of man-made damage
- After 72 hours drying, the nano-microcement can be used initially.
- After 21 days, the micro-cement construction layers have reached the best hardness and water-resistant and can be used normally.
- During use, pay attention to the cleanliness of the floor,
- The colored nano-microcement adopts the principle of penetrating paint. After the surface is dry, it has hardness, water resistance, stain resistance, and anti-aging properties. It can be used for 8 to 12 years without varnishing.
- Colored nano-microcement is used for indoor sunlight part or exterior floor construction. Please use exterior wall anti-ultraviolet color paste or inorganic color paste. For more details, please consult OURSTUCCO experts or regional agents

注意事项:

- 微水泥地面施工完成后,72小时内必须保持地面无交叉污染,拒绝人为损坏等各类情况,
- 72小时后,微水泥的纳米水性面层,表面干燥后,就可以初步使用。
- 21天后,全部微水泥施工层达到最佳硬度和防水性,可以正常使用。
- 使用中,注意地面的清洁卫生,微水泥完全成活后,耐污指数在地面涂层中,达到很高水平,可以放心使用。
- 彩色纳米微水泥,采用渗透色漆原理,表面干燥后,硬度,防水,耐污,和抗老化性达到地面涂料顶级水平,无需罩光,就可以使用8~12年。
- 室内阳光照射部分或户外地面,施工彩色纳米微水泥,请使用外墙抗紫外线色浆,具体请咨询OURSUTCCO品牌专家或代理商。

ORIGINAL MICROCEMENT TWO-COMPONENT

肌理 [双组份素微水泥]



素色微水泥面层或垫层 [粗砂]
Original MICROCEMENT BASE (coarse sand)



素色微水泥面层 [300#超细砂]
Original Microcement Surface (300# super-fine sand)



素色微水泥面层 [中砂]
Original MICROCEMENT SURFACE (moderate sand)



素色微水泥面层 [240#超硬砂]
Original Microcement Surface (240# super-hard sand)



素色微水泥面层 [细砂]
Original MICROCEMENT SURFACE (fine sand)

Two-component micro-cement powder mixed with cement composite emulsion for use, The microcement base and the microcement surface can be applied together to make the coating strength of the overall microcement reach the highest standard.

The color of original microcement surface can be tuned. This booklet recommends 137 Morandi inorganic mineral colors. DIY color replication is also available. Please consult your local agent for details.

(In use, you can tune the color of microcement composite emulsion, and then mix it with the dry powder microcement at a ratio of 1:2.5, then you can get more original microcement inorganic colors. For details, consult the local agent for professional assistance.)

双组份微水泥粉料与水泥复合乳液混合使用，
垫层微水泥和面层素色微水泥互相配合使用，使整体微水泥的涂层强度达到最高标准。

面层素色微水泥可以进行调色，本册推荐138个莫兰迪无机矿物色。
也可进行DIY色彩复制，具体咨询当地代理商。

(使用时，可对微水泥复合乳液调色，然后按1:2.5比例混合干粉微水泥，就可得到更多素色微水泥无机色，具体咨询当地代理商，由专业人士协助完成)



OURSTUCCO®

Color

ORIGIN- MICROCEMENT 素微水泥



cod. **OST-WSN-1001**
RGB(216,215,209)ORIGIN-CEMENT



cod. **OST-WSN-1005**
RGB(216,214,206)ORIGIN-CEMENT



cod. **OST-WSN-1009**
RGB(209,208,205)ORIGIN-CEMENT



cod. **OST-WSN-1013**
RGB(209,207,203)ORIGIN-CEMENT



cod. **OST-WSN-1002**
RGB(202,201,197)ORIGIN-CEMENT



cod. **OST-WSN-1006**
RGB(198,198,194)ORIGIN-CEMENT



cod. **OST-WSN-1010**
RGB(188,188,187)ORIGIN-CEMENT



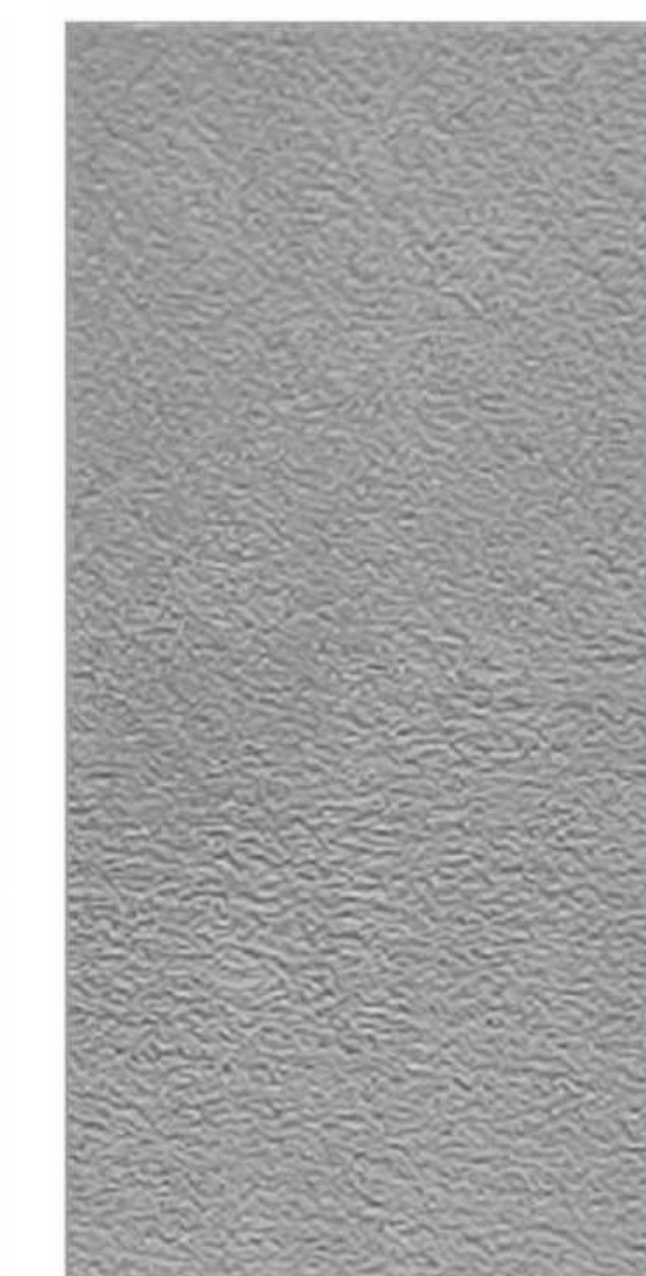
cod. **OST-WSN-1014**
RGB(191,190,188)ORIGIN-CEMENT



cod. **OST-WSN-1003**
RGB(180,178,175)ORIGIN-CEMENT



cod. **OST-WSN-1007**
RGB(170,170,168)ORIGIN-CEMENT



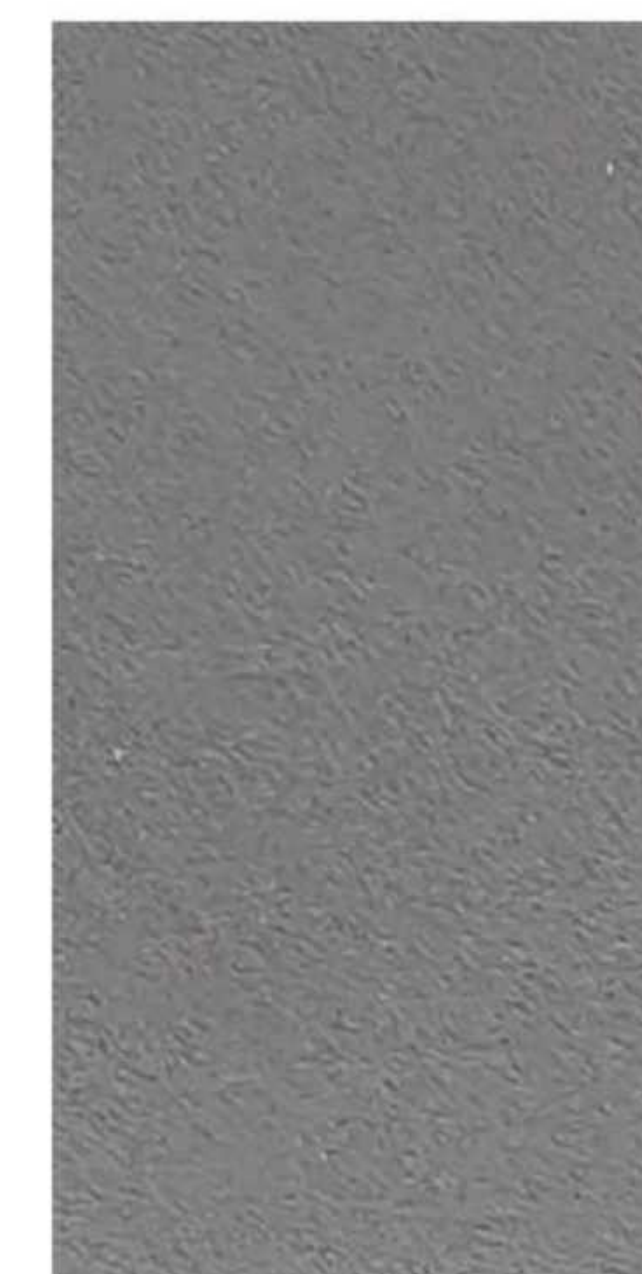
cod. **OST-WSN-1011**
RGB(157,157,158)ORIGIN-CEMENT



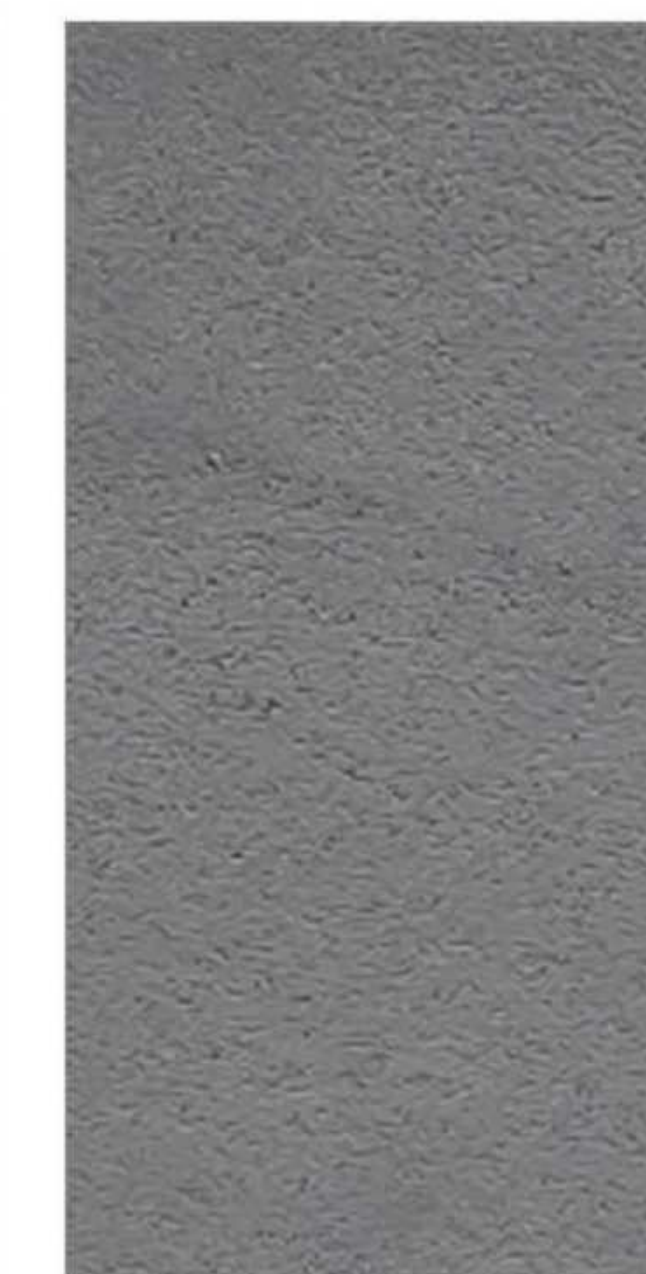
cod. **OST-WSN-1015**
RGB(164,162,162)ORIGIN-CEMENT



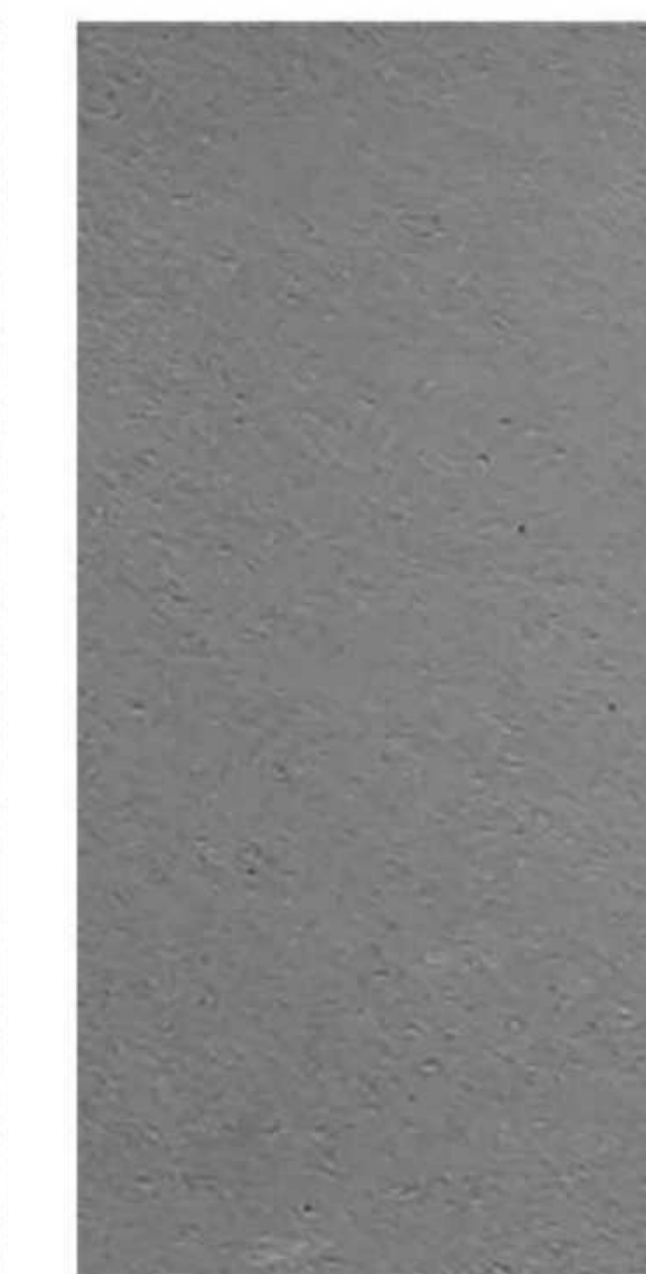
cod. **OST-WSN-1004**
RGB(148,146,144)ORIGIN-CEMENT



cod. **OST-WSN-1008**
RGB(138,136,136)ORIGIN-CEMENT



cod. **OST-WSN-1012**
RGB(128,128,130)ORIGIN-CEMENT



cod. **OST-WSN-1016**
RGB(127,126,127)ORIGIN-CEMENT

OURSTUCCO®



Color

ORIGIN- MICROCEMENT 素微水泥



cod. **OST-WSN-1017**
RGB(219,217,211)ORIGIN-CEMENT



cod. **OST-WSN-1021**
RGB(219,216,209)ORIGIN-CEMENT



cod. **OST-WSN-1025**
RGB(216,213,206)ORIGIN-CEMENT



cod. **OST-WSN-1029**
RGB(215,211,204)ORIGIN-CEMENT



cod. **OST-WSN-1018**
RGB(207,206,201)ORIGIN-CEMENT



cod. **OST-WSN-1022**
RGB(205,202,195)ORIGIN-CEMENT



cod. **OST-WSN-1026**
RGB(204,199,192)ORIGIN-CEMENT



cod. **OST-WSN-1030**
RGB(201,195,186)ORIGIN-CEMENT



cod. **OST-WSN-1019**
RGB(188,186,182)ORIGIN-CEMENT



cod. **OST-WSN-1023**
RGB(182,179,173)ORIGIN-CEMENT



cod. **OST-WSN-1027**
RGB(183,178,172)ORIGIN-CEMENT



cod. **OST-WSN-1031**
RGB(180,173,165)ORIGIN-CEMENT



cod. **OST-WSN-1020**
RGB(160,158,154)ORIGIN-CEMENT



cod. **OST-WSN-1024**
RGB(153,148,142)ORIGIN-CEMENT



cod. **OST-WSN-1028**
RGB(155,149,142)ORIGIN-CEMENT



cod. **OST-WSN-1032**
RGB(145,138,128)ORIGIN-CEMENT



Color

ORIGIN- MICROCEMENT 素微水泥



cod. **OST-WSN-1033**
RGB(217,215,208)ORIGIN-CEMENT



cod. **OST-WSN-1037**
RGB(212,209,202)ORIGIN-CEMENT



cod. **OST-WSN-1041**
RGB(215,212,206)ORIGIN-CEMENT



cod. **OST-WSN-1045**
RGB(212,209,201)ORIGIN-CEMENT



cod. **OST-WSN-1034**
RGB(205,202,195)ORIGIN-CEMENT



cod. **OST-WSN-1038**
RGB(196,194,189)ORIGIN-CEMENT



cod. **OST-WSN-1042**
RGB(200,198,193)ORIGIN-CEMENT



cod. **OST-WSN-1046**
RGB(194,192,183)ORIGIN-CEMENT



cod. **OST-WSN-1035**
RGB(183,181,174)ORIGIN-CEMENT



cod. **OST-WSN-1039**
RGB(173,171,165)ORIGIN-CEMENT



cod. **OST-WSN-1043**
RGB(176,175,170)ORIGIN-CEMENT



cod. **OST-WSN-1047**
RGB(167,165,155)ORIGIN-CEMENT



cod. **OST-WSN-1036**
RGB(157,154,147)ORIGIN-CEMENT



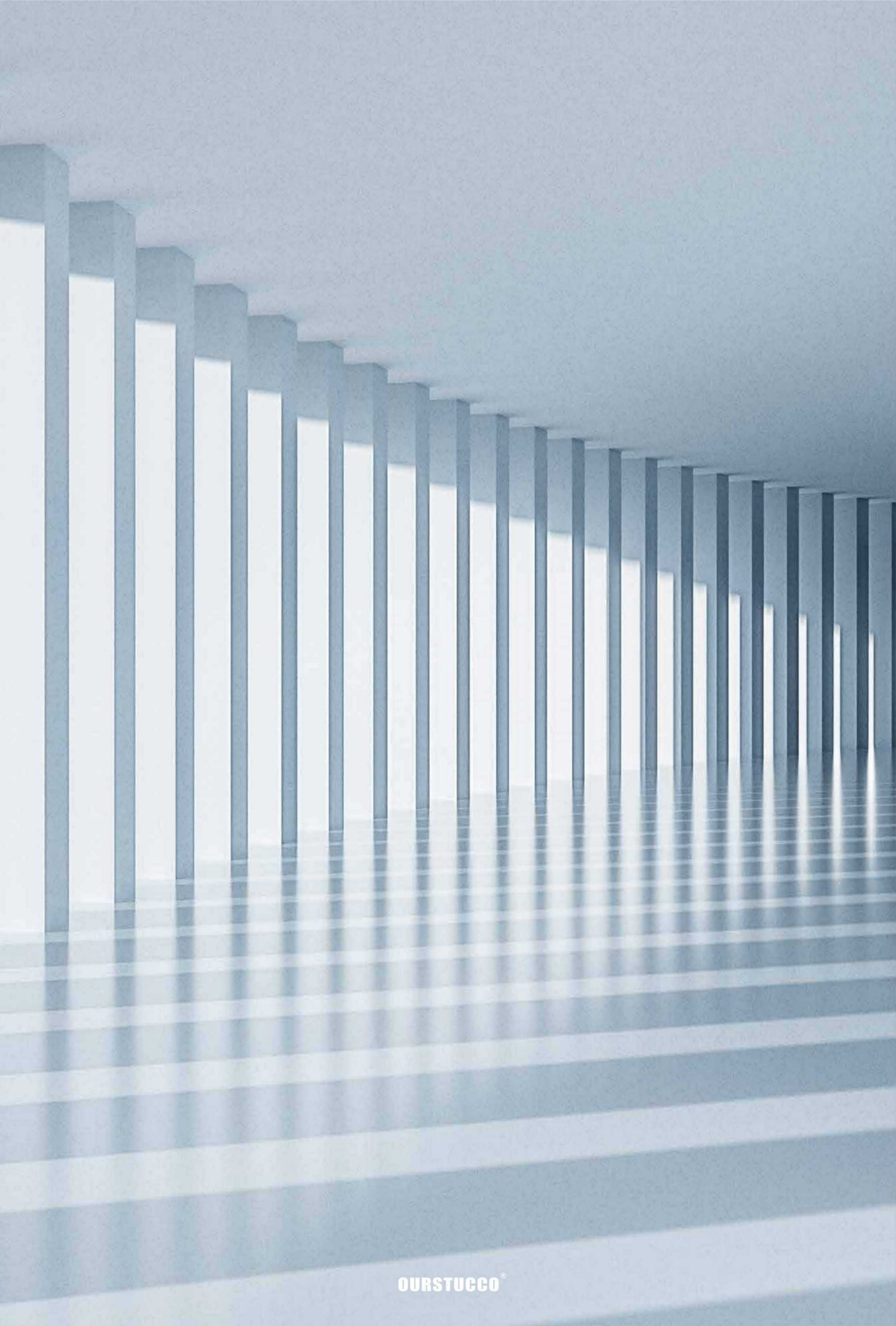
cod. **OST-WSN-1040**
RGB(144,142,135)ORIGIN-CEMENT



cod. **OST-WSN-1044**
RGB(146,144,135)ORIGIN-CEMENT

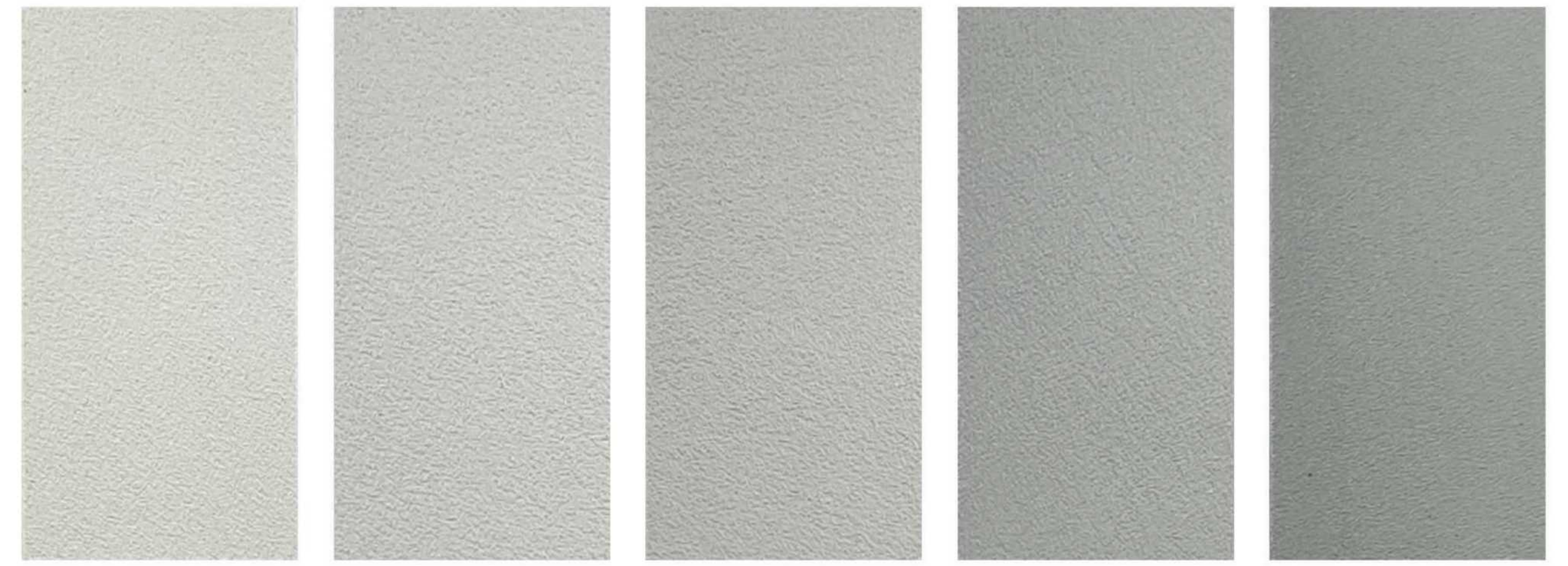


cod. **OST-WSN-1048**
RGB(128,125,116)ORIGIN-CEMENT



Color

ORIGIN-MICROCEMENT 素微水泥



cod. **OST-WSN-1049**
RGB(215,215,208)ORIGIN-CEMENT

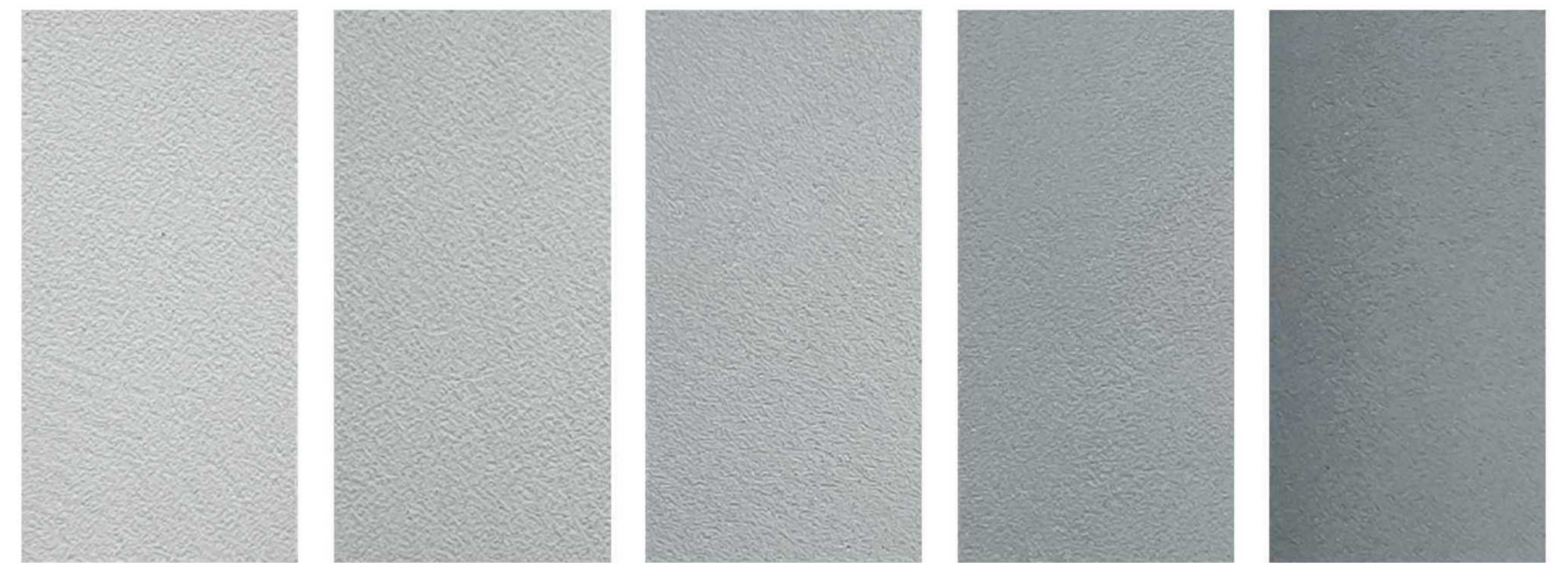
cod. **OST-WSN-1050**
RGB(202,203,197)ORIGIN-CEMENT

cod. **OST-WSN-1051**
RGB(185,188,182)ORIGIN-CEMENT

cod. **OST-WSN-1052**
RGB(169,173,168)ORIGIN-CEMENT

cod. **OST-WSN-1053**
RGB(149,153,147)ORIGIN-CEMENT

ORIGIN-MICROCEMENT 素微水泥



cod. **OST-WSN-1054**
RGB(203,206,203)ORIGIN-CEMENT

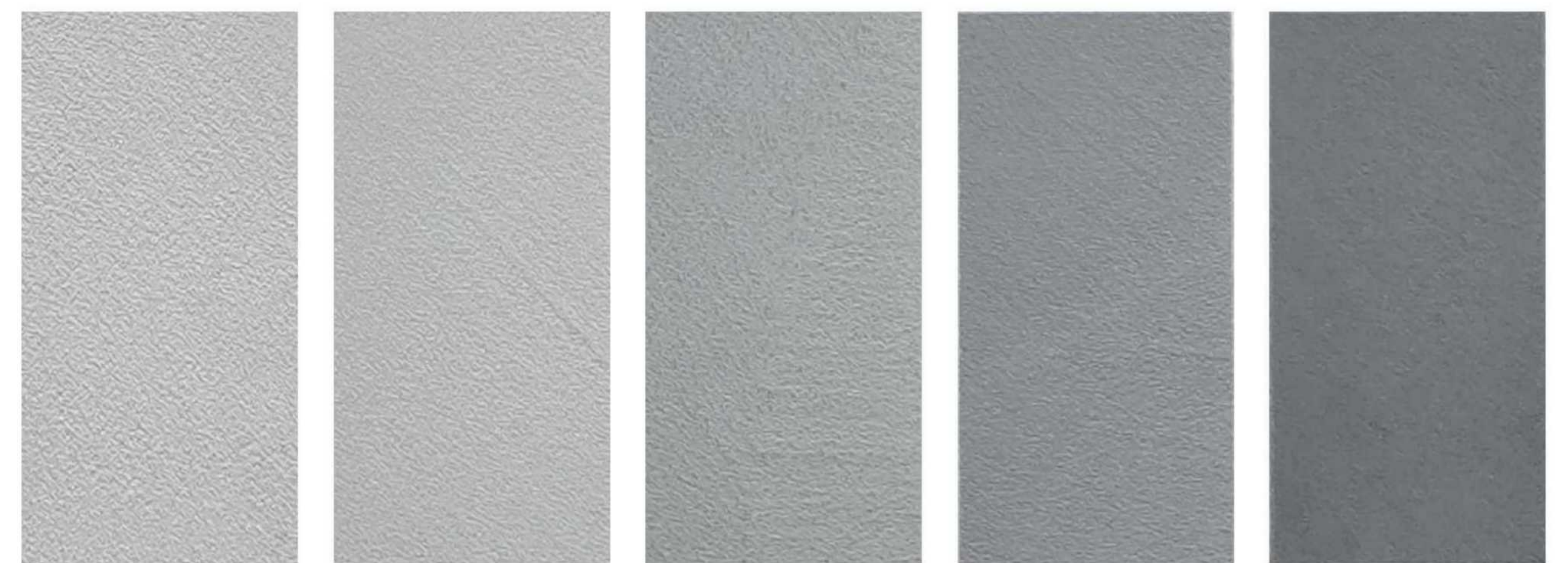
cod. **OST-WSN-1055**
RGB(190,194,193)ORIGIN-CEMENT

cod. **OST-WSN-1056**
RGB(173,179,179)ORIGIN-CEMENT

cod. **OST-WSN-1057**
RGB(154,161,162)ORIGIN-CEMENT

cod. **OST-WSN-1058**
RGB(129,137,139)ORIGIN-CEMENT

ORIGIN-MICROCEMENT 素微水泥



cod. **OST-WSN-1059**
RGB(198,199,197)ORIGIN-CEMENT

cod. **OST-WSN-1060**
RGB(185,187,187)ORIGIN-CEMENT

cod. **OST-WSN-1061**
RGB(167,170,171)ORIGIN-CEMENT

cod. **OST-WSN-1062**
RGB(145,150,152)ORIGIN-CEMENT

cod. **OST-WSN-1063**
RGB(120,125,127)ORIGIN-CEMENT



Color

ORIGIN-MICROCEMENT
素微水泥



cod.OST-WSN-1064 RGB(213,212,202)ORIGIN-CEMENT
 cod.OST-WSN-1065 RGB(208,205,195)ORIGIN-CEMENT
 cod.OST-WSN-1066 RGB(194,195,182)ORIGIN-CEMENT
 cod.OST-WSN-1067 RGB(179,179,165)ORIGIN-CEMENT
 cod.OST-WSN-1068 RGB(158,159,144)ORIGIN-CEMENT

ORIGIN-MICROCEMENT
素微水泥



cod.OST-WSN-1069 RGB(216,217,209)ORIGIN-CEMENT
 cod.OST-WSN-1070 RGB(207,209,200)ORIGIN-CEMENT
 cod.OST-WSN-1071 RGB(194,199,189)ORIGIN-CEMENT
 cod.OST-WSN-1072 RGB(182,188,178)ORIGIN-CEMENT
 cod.OST-WSN-1073 RGB(163,171,159)ORIGIN-CEMENT

ORIGIN-MICROCEMENT
素微水泥



cod.OST-WSN-1074 RGB(211,215,208)ORIGIN-CEMENT
 cod.OST-WSN-1075 RGB(201,208,199)ORIGIN-CEMENT
 cod.OST-WSN-1076 RGB(187,197,188)ORIGIN-CEMENT
 cod.OST-WSN-1077 RGB(171,183,174)ORIGIN-CEMENT
 cod.OST-WSN-1078 RGB(151,166,155)ORIGIN-CEMENT



OURSTUCCO®

Color

ORIGIN-MICROCEMENT
素微水泥



cod.OST-WSN-1079
RGB(225,219,206)ORIGIN-CEMENT

cod.OST-WSN-1080
RGB(223,214,197)ORIGIN-CEMENT

cod.OST-WSN-1081
RGB(217,205,183)ORIGIN-CEMENT

cod.OST-WSN-1082
RGB(207,191,163)ORIGIN-CEMENT

cod.OST-WSN-1083
RGB(197,179,147)ORIGIN-CEMENT

ORIGIN-MICROCEMENT
素微水泥



cod.OST-WSN-1084
RGB(223,216,202)ORIGIN-CEMENT

cod.OST-WSN-1085
RGB(219,209,191)ORIGIN-CEMENT

cod.OST-WSN-1086
RGB(212,200,178)ORIGIN-CEMENT

cod.OST-WSN-1087
RGB(201,185,160)ORIGIN-CEMENT

cod.OST-WSN-1088
RGB(186,168,138)ORIGIN-CEMENT

ORIGIN-MICROCEMENT
素微水泥



cod.OST-WSN-1089
RGB(219,210,195)ORIGIN-CEMENT

cod.OST-WSN-1090
RGB(214,203,184)ORIGIN-CEMENT

cod.OST-WSN-1091
RGB(205,192,169)ORIGIN-CEMENT

cod.OST-WSN-1092
RGB(191,174,147)ORIGIN-CEMENT

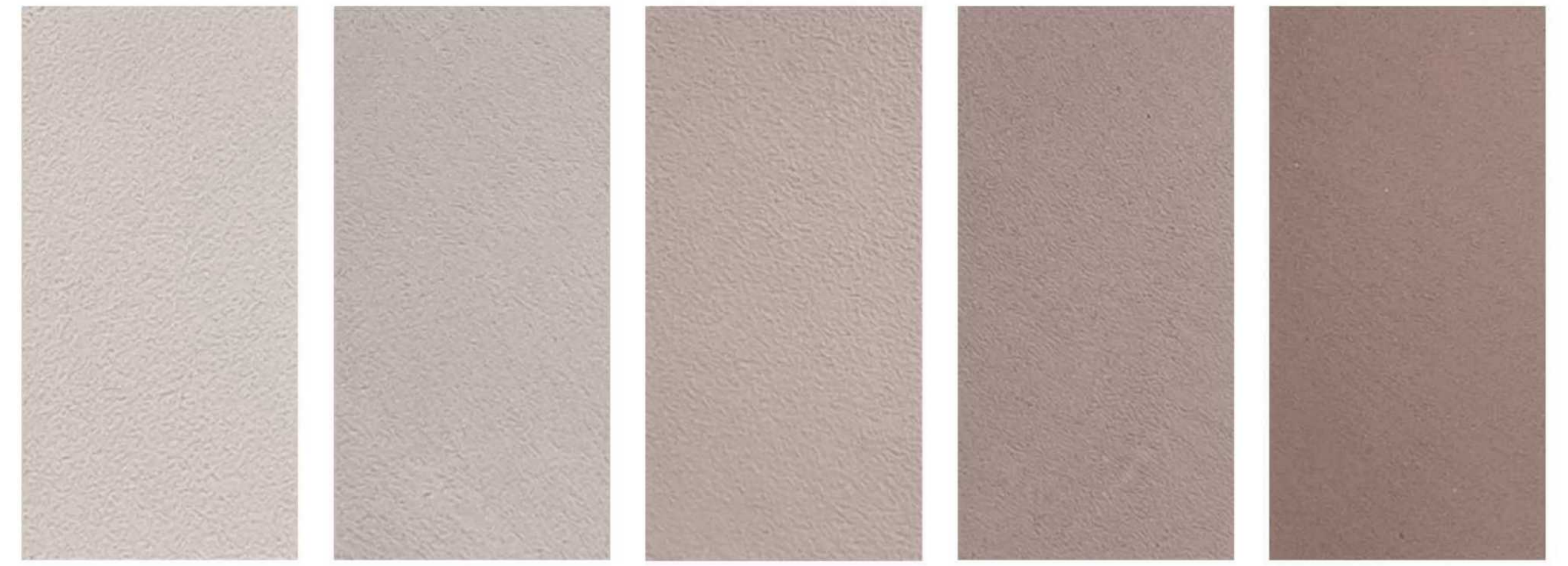
cod.OST-WSN-1093
RGB(177,159,130)ORIGIN-CEMENT

OURSTUCCO®



Color

ORIGIN-MICROCEMENT 素微水泥



cod.OST-WSN-1094
RGB(211,200,194)ORIGIN-CEMENT

cod.OST-WSN-1095
RGB(199,185,179)ORIGIN-CEMENT

cod.OST-WSN-1096
RGB(186,170,164)ORIGIN-CEMENT

cod.OST-WSN-1097
RGB(169,151,145)ORIGIN-CEMENT

cod.OST-WSN-1098
RGB(150,126,117)ORIGIN-CEMENT

ORIGIN-MICROCEMENT 素微水泥



cod.OST-WSN-1099
RGB(216,204,195)ORIGIN-CEMENT

cod.OST-WSN-1100
RGB(207,191,182)ORIGIN-CEMENT

cod.OST-WSN-1101
RGB(195,175,166)ORIGIN-CEMENT

cod.OST-WSN-1102
RGB(179,156,145)ORIGIN-CEMENT

cod.OST-WSN-1103
RGB(161,135,125)ORIGIN-CEMENT

ORIGIN-MICROCEMENT 素微水泥



cod.OST-WSN-1104
RGB(215,198,188)ORIGIN-CEMENT

cod.OST-WSN-1105
RGB(208,186,176)ORIGIN-CEMENT

cod.OST-WSN-1106
RGB(194,168,156)ORIGIN-CEMENT

cod.OST-WSN-1107
RGB(180,150,138)ORIGIN-CEMENT

cod.OST-WSN-1108
RGB(161,128,115)ORIGIN-CEMENT



Color

ORIGIN-MICROCEMENT 素微水泥



cod.OST-WSN-1109
RGB(223,205,191)ORIGIN-CEMENT

cod.OST-WSN-1110
RGB(219,194,178)ORIGIN-CEMENT

cod.OST-WSN-1111
RGB(211,179,158)ORIGIN-CEMENT

cod.OST-WSN-1112
RGB(199,160,137)ORIGIN-CEMENT

cod.OST-WSN-1113
RGB(188,145,120)ORIGIN-CEMENT

ORIGIN-MICROCEMENT 素微水泥



cod.OST-WSN-1114
RGB(223,200,186)ORIGIN-CEMENT

cod.OST-WSN-1115
RGB(219,191,175)ORIGIN-CEMENT

cod.OST-WSN-1116
RGB(213,178,160)ORIGIN-CEMENT

cod.OST-WSN-1117
RGB(201,159,137)ORIGIN-CEMENT

cod.OST-WSN-1118
RGB(187,138,110)ORIGIN-CEMENT

ORIGIN-MICROCEMENT 素微水泥



cod.OST-WSN-1119
RGB(222,199,188)ORIGIN-CEMENT

cod.OST-WSN-1120
RGB(216,185,172)ORIGIN-CEMENT

cod.OST-WSN-1121
RGB(207,171,155)ORIGIN-CEMENT

cod.OST-WSN-1122
RGB(194,152,134)ORIGIN-CEMENT

cod.OST-WSN-1123
RGB(175,125,104)ORIGIN-CEMENT



Color

ORIGIN-MICROCEMENT 素微水泥



cod. **OST-WSN-1124**
RGB(226,219,198)ORIGIN-CEMENT

cod. **OST-WSN-1125**
RGB(227,215,189)ORIGIN-CEMENT

cod. **OST-WSN-1126**
RGB(224,207,173)ORIGIN-CEMENT

cod. **OST-WSN-1127**
RGB(219,196,153)ORIGIN-CEMENT

cod. **OST-WSN-1128**
RGB(207,180,128)ORIGIN-CEMENT

ORIGIN-MICROCEMENT 素微水泥



cod. **OST-WSN-1129**
RGB(224,210,187)ORIGIN-CEMENT

cod. **OST-WSN-1130**
RGB(223,204,177)ORIGIN-CEMENT

cod. **OST-WSN-1131**
RGB(217,193,160)ORIGIN-CEMENT

cod. **OST-WSN-1132**
RGB(207,176,136)ORIGIN-CEMENT

cod. **OST-WSN-1133**
RGB(194,160,115)ORIGIN-CEMENT

ORIGIN-MICROCEMENT 素微水泥



cod. **OST-WSN-1134**
RGB(222,209,187)ORIGIN-CEMENT

cod. **OST-WSN-1135**
RGB(221,202,172)ORIGIN-CEMENT

cod. **OST-WSN-1136**
RGB(215,189,152)ORIGIN-CEMENT

cod. **OST-WSN-1137**
RGB(206,174,132)ORIGIN-CEMENT

cod. **OST-WSN-1138**
RGB(192,154,106)ORIGIN-CEMENT

美国OURSTUCCO微水泥产品(一)

OURSTUCCO粉料系列:

微水泥粗砂 Original Microcement Base (coarse sand)

粗砂, 双组分微水泥中的粉料组分, 颗粒较粗, 约30-40目。

适用于地面微水泥施工中的底层找平打底。

Packing 包装规格

25KG/桶

Mixing Ratio 调配比例 (每套)

25KG微水泥粗砂+10KG微水泥标准/超硬乳液 (依据需求选择乳液)

Coating area涂布面积

每套单遍可批刮约18~20平米

Solidification Time凝固时间

与乳液混合后, 6-8小时

Service Conditions使用条件

配合微水泥乳液使用, 混合均匀后批刮施工, 6小时内使用完毕。

Storage Conditions储存条件

避光常温保存2年。

微水泥中砂 Original Microcement Surface (moderate sand)

中砂, 双组分微水泥中的粉料组分, 颗粒适中, 约40-80目。

适用于地面微水泥施工中的底层找平后的填缝密实, 或应用于

微水泥表层凸显颗粒感效果。

Packing 包装规格

25KG/桶

Mixing Ratio 调配比例 (每套)

25KG微水泥中砂+10KG10KG微水泥标准/超硬乳液 (依据需求选择乳液)

Coating area涂布面积

每套单遍可批刮约20~22平米

Solidification Time凝固时间

与乳液混合后, 6-8小时

Service Conditions使用条件

配合微水泥乳液使用, 混合均匀后批刮施工, 6小时内使用完毕。

Storage Conditions储存条件

避光常温保存2年。

微水泥细砂 Original Microcement Surface (fine sand)

细砂, 双组分微水泥中的粉料组分, 颗粒较小, 约80-120目。

适用于地面微水泥施工中的打底处理后的表层装饰或墙面微水泥

施工中辊涂抗碱封闭底漆之后的表层装饰。

Packing 包装规格

25KG/桶

Mixing Ratio 调配比例

25KG微水泥细砂+10KG微水泥标准/超硬乳液 (依据需求选择乳液)

Coating area涂布面积

每套单遍可批刮约60~65平米

Solidification Time凝固时间

与乳液混合后, 6-8小时

Service Conditions使用条件

配合微水泥乳液使用, 混合均匀后批刮施工, 6小时内使用完毕。

Storage Conditions储存条件

避光常温保存2年。

300#超细砂 Original Microcement Surface (300# super-finesand)

300#超细砂为定制新品, 双组分微水泥中的粉料组分, 是微水泥粉料

系列中颗粒最细小的一款, 约180-300目。适用于墙面微水泥施工中辊

涂抗碱封闭底漆之后的表层装饰, 可打造更为精致细腻的面层质感。

Packing 包装规格

25KG/桶

Mixing Ratio 调配比例

25KG微水泥300#超细砂+10KG微水泥标准/超硬乳液 (依据需求选择乳液)

Coating area涂布面积

每套单遍可批刮约80平米

Solidification Time凝固时间

与乳液混合后, 6-8小时

Service Conditions使用条件

配合微水泥乳液使用, 混合均匀后批刮施工, 6小时内使用完毕。

Storage Conditions储存条件

避光常温保存2年。

240#超硬砂 Original Microcement Surface (240# super-hard sand)

240#超细砂为定制新品, 双组分微水泥中的粉料组分, 是微水泥粉料系列

中颗粒最为坚硬的一款, 由高密度球形锆珠组成, 约120-240目。适用于地

面微水泥施工中打底处理之后的表层装饰, 打造超硬坚固的地面面层。建

议与微水泥细砂1:1混合使用, 方便施工与打磨。

Packing 包装规格

25KG/桶

Mixing Ratio 调配比例

25KG微水泥240#超细砂+10KG微水泥标准/超硬乳液 (依据需求选择乳液)

Coating area涂布面积

每套单遍可批刮约70平米

Solidification Time凝固时间

与乳液混合后, 6-8小时

Service Conditions使用条件

配合微水泥乳液使用, 混合均匀后批刮施工, 6小时内使用完毕。

Storage Conditions储存条件

避光常温保存2年。

OURSTUCCO乳液系列:

标准弹性乳液 Elastic Composite Emulsion

标准弹性乳液为环保丙烯酸树脂, 双组分微水泥系统中的液料组分, 与微水

泥粉料较链形成韧性面层, 适用于墙面微水泥施工中表层装饰或地面微水

泥施工中底层处理。请按照施工说明种技术参数规定比例与微水泥粉料混

合均匀使用。

Packing 包装规格

10KG/桶

Mixing Ratio 调配比例

10KG标准弹性乳液+25KG微水泥粉料 (依据需求选择粉料)

Service Conditions使用条件

配合微水泥粉料使用, 混合均匀后批刮施工, 6小时内使用完毕。

Storage Conditions储存条件

避光密封保存2年。

超硬复合乳液 Hard Compound Emulsion

标准弹性乳液为环保丙烯酸树脂, 双组分微水泥系统中的液料组分, 与微水

泥粉料较链形成超硬面层, 适用于地面微水泥施工中表层处理。请按照施工

说明种技术参数规定比例与微水泥粉料混合均匀使用。

Packing 包装规格

10KG/桶

Mixing Ratio 调配比例

10KG超硬复合乳液+25KG微水泥粉料 (依据需求选择粉料)

Service Conditions使用条件

配合微水泥粉料使用, 混合均匀后批刮施工, 6小时内使用完毕。

Storage Conditions储存条件

避光密封保存2年。

超白水泥乳液

素色超白微水泥液粉, 钛白含量超过40%, 混合微水泥粉料使用, 是目前业

内最白的素色微水泥。(容易沉淀, 使用前, 请搅拌均匀。)

Packing 包装规格

10KG/桶

Mixing Ratio 调配比例

10KG超白乳液+25KG微水泥粉料 (依据需求选择粉料)

Service Conditions使用条件

配合微水泥粉料使用, 混合均匀后批刮施工, 6小时内使用完毕。

Storage Conditions储存条件

避光密封保存2年。

OURSTUCCO抗碱系列:

抗碱封闭底漆 Alkali resistant seal primer

适用于墙面及地面微水泥施工中打底处理, 具有渗透性、封闭性和抗碱性,

防霉、防潮, 能加固基层、保护面层。

Packing 包装规格

10KG/桶

Application Method使用方法

加入清水50%-100%, 滚涂两遍。

Storage Conditions储存条件

避光密封保存3年。

STYLE OF MICROCEMENT 素微水泥案例鉴赏

Industry 工业风

Room 家居风

Industry

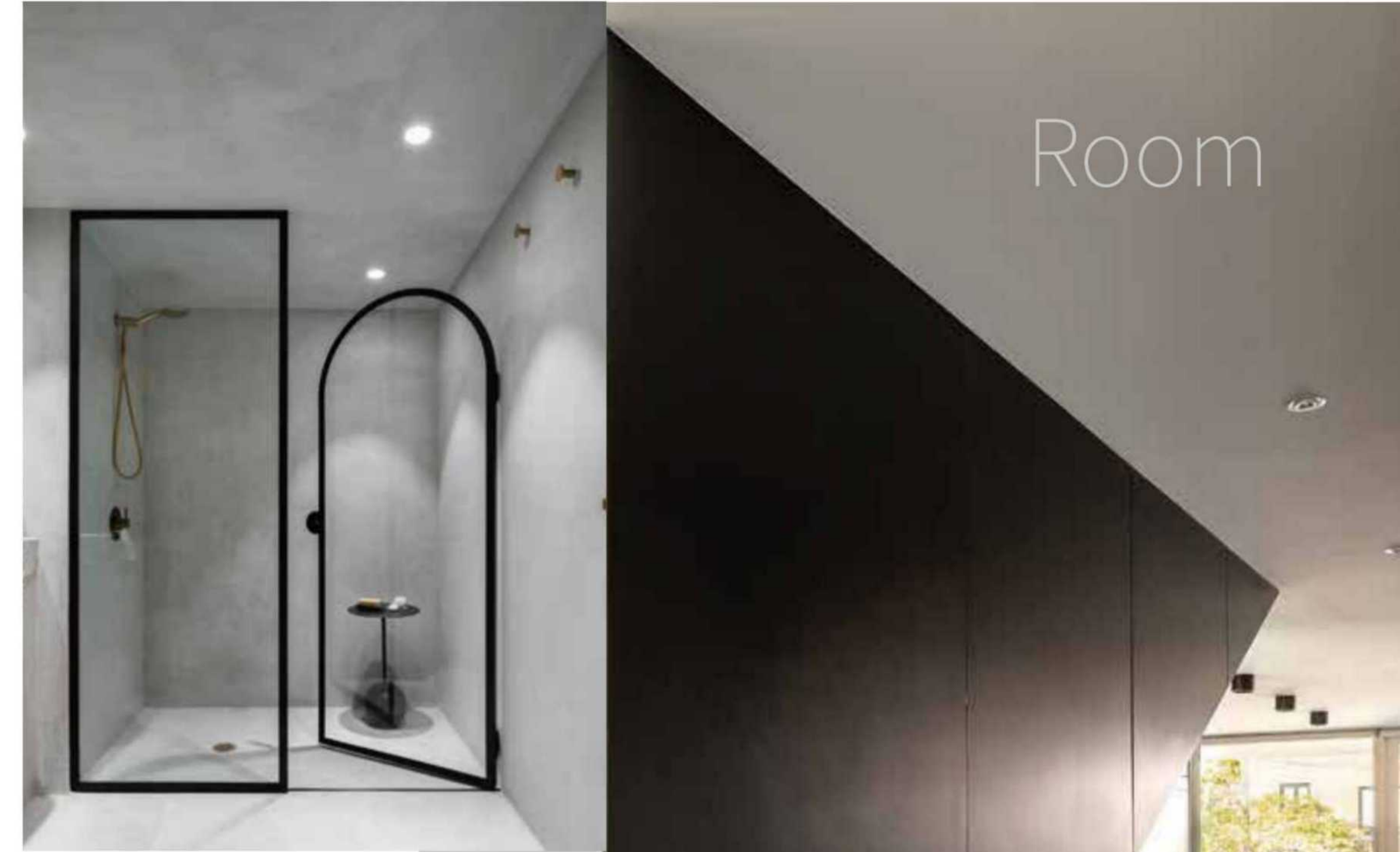


The industrial-style original cement is widely used in various art places, abstract and conceptual spaces, It shapes purely humanistic architectural art aesthetics.



素微水泥的工业风, 广泛应用于各类艺术场所, 抽象和概念空间, 塑造纯人文的建筑艺术美学。

Room



The home furnishing style of original cement widely applies the gray system of concrete itself to the home space on a large scale. It can be matched with all ki

素微水泥的家居风, 广泛将混凝土本身的灰色系, 大规模应用于家居空间, 搭配各类家具和软装, 形成一种极简的现代装饰风格。

